



**INSTRUCTION BOOKLET
MODEL NUMBER**

700661-2



BERCO
Hydraulic rotation kit « R » TYPE

* ASSEMBLY
* OPERATION

* REPAIR PARTS
* MAINTENANCE

CAUTION:
READ & FOLLOW ALL SAFETY RULES & INSTRUCTIONS BEFORE
OPERATING YOUR EQUIPMENT



LIMITED WARRANTY

Conditions and Products Covered:

BERCOMAC guarantees any part of the product or accessory manufactured by BERCOMAC and found in the reasonable judgment of BERCOMAC to be defective in material and or workmanship will be repaired or replaced by an authorized dealer without charge up to our maximum labor rates and pre-established times. For replacement parts only standard ground freight services are covered. This warranty extends to the original retail purchaser only and is not transferable to any subsequent purchasers. This warranty applies to the products bought and used in North America.

Warranty Period

(from date of the original retail purchase)

- Residential use: 1 year
- Semi-commercial, professional or rental use: 90 days

Exceptions Noted Below; the following items are guaranteed by the original manufacturer and have their own warranty, conditions and limited time:

- Tire Chains: 90 days
- Engines: Will vary as per the manufacturer
Please refer to the engine manufacturer's warranty statement included with the unit. BERCOMAC is not authorized to handle warranty adjustments on engines.

Items and Conditions NOT Covered:

This warranty does not cover the following:

- Pick-up or delivery charges or in-home services fees.
- Any damage or deterioration of the unit, parts and or finish of these due to normal use, wear and tear, or exposure.
- Cost of regular use or maintenance service or parts, such as gas, oil, lubricants, tune-up parts, and adjustments.
- Any part or accessory which has been altered, modified, misused, neglected, accidentally damaged or not properly installed, maintained, stored or repaired not in accordance with the instructions in the owner's manual.
- Repair due to normal wear and or any wear items such as shear pins, bolts, belts, etc.
- Expedited freight fee services for replacement parts.
- Shear bolts and shear pins are to be considered as a preventive measure not as an assured protection, any damages resulting from the lack of shear bolts breakage are not covered.
- Damages due to product being installed on a vehicle other than stipulated in owner's manual.

NOTE: All warranty work must be performed by an authorized dealer using original (manufacturer) replacement parts.

NOTE: Bercomac reserves the right to change or improve the design of any part or accessory without assuming any obligation to modify any product previously manufactured.

Instructions for Obtaining Warranty Services:

Contact dealer where equipment was purchased or any other BERCO service dealer to arrange service at their dealership. Requests for warranty claims must be carried out through the same distribution network used to purchase the product.. Don't forget to bring your proof of purchase (sales receipt) to the BERCOMAC dealer.

Owner's Responsibilities:

BERCOMAC's defective equipment or part must be returned to an authorized dealer within the warranty period for repairs. In the event that defective merchandise must be returned to manufacturer for repairs, freight fees are prepaid and a written authorization from BERCOMAC must be obtained by dealer prior to the shipment. This warranty extends only to equipment operated under normal conditions. To validate a warranty claim, it is the user's responsibility to maintain and service the unit as specified in the owner's manual or to have the unit serviced at their dealer at their expense.

General Conditions:

The sole liability of BERCOMAC with respect to this warranty shall be strictly and exclusively repair and replacement as mentioned herein. BERCOMAC shall not have any liability for any other costs, loss or damage, including but not limited to, any incidental or consequential loss or damage. Taking advantage of the warranty does not in any way extend the length or renewal of the warranty.

In particular, without being limited to, BERCOMAC shall have no liability or responsibility for:

- Travel time, overtime, after hours time or other extraordinary repair charges or relating to repairs and or replacements outside of normal business hours.
- Rental of like or similar replacement equipment during the period of any, repair or replacement work.
- Any communicating or travel charges.
- Loss or damage to person or property other than that covered by the terms of this warranty.
- Any claims for lost revenue, lost profit or any similar costs as a result of damage or repair.
- Attorney's fees.

BERCOMAC's responsibility in respect to claims is limited to making the required repairs or replacement without charge up to our maximum labor rates and pre-established times and no claim of breach of warranty shall be cause for cancellation or rescission of the contract of sale of any product or accessory. In no event recovery of any kind be greater than the amount of the purchase price of the product sold.

This warranty gives you specific legal rights. You may also have other rights, which vary from state to state.

TABLE OF CONTENTS

	PAGE
VEHICLE REQUIREMENTS	1
ASSEMBLY	1
HYDRAULIC CHUTE ROTATION TYPE ASSEMBLY	2
MANUAL CHUTE ROTATION TYPE ASSEMBLY	5
OPERATION	11
PARTS BREAKDOWN AND PARTLIST	12
TORQUE SPECIFICATION TABLE	15

ASSEMBLAGE

VEHICLE REQUIREMENTS

The vehicle must be equipped with loader hydraulic control lever

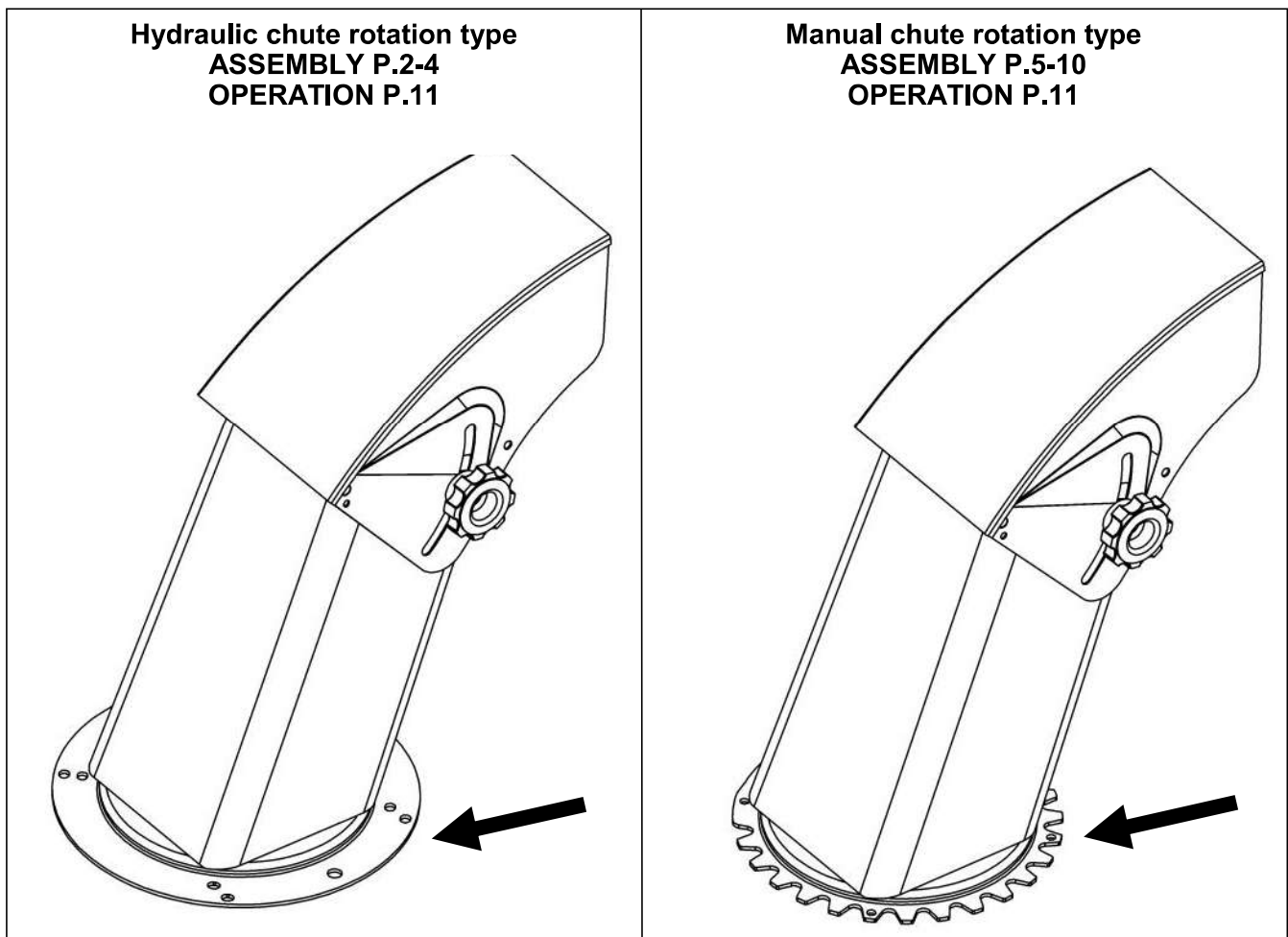
ASSEMBLY

Always follow all safety precautions / instructions in the manual of the snowblower, subframe, vehicle, loader and any other related equipment.

IMPORTANT: UNLESS OTHERWISE SPECIFIED Torque all bolts according to torque specification table (see table of contents) when stated: Tighten firmly. Refer to parts breakdown section for part identification.

Chute type specific assembly instruction

Follow the proper assembly instruction depending on the chute type. (the lower portion of the chute is different depending the chute type)



ASSEMBLY

HYDRAULIC CHUTE ROTATION TYPE ONLY

STEP 1

HYDRAULIC HOSES PREPARATION AND ASSEMBLY

HYDRAULIC HOSES AND ADAPTORS

Since the connectors and the length of the hydraulic hoses vary a lot from one tractor to another and according to the different options installed on the vehicle, you must make sure that the hoses which are included in this kit are the right length.

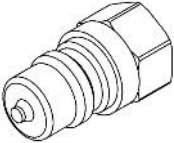
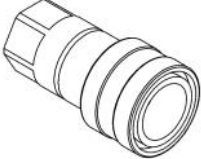
If needed, you must obtain locally the appropriate hydraulic hose extensions and hydraulic adaptors that fit your tractor.

Connect the hydraulic adaptors on the hydraulic hoses.

If available, follow the instructions included with the adaptor kit that corresponds to your vehicle (700740, 700741, or other).

Before starting the installation:

- Read and understand the instructions
- Please sort and identify all the hardware with the packing lists.

700740	700741
Quick nipple 3/8" ISO A	Quick coupler 3/8" ISO A
	

	WARNING	
TO PREVENT INJURIES: If you suspect a oil leak in the hoses NEVER use you hand to locate it. Use a piece of cardboard or a piece of wood.		

STEP 2

HYDRAULIC MOTOR ASSEMBLY

Hydraulic motor support installation:

Remove the two 1/4" nylon insert lock nuts (item a) and flat washers (item a) that were preinstalled on the snowblower.

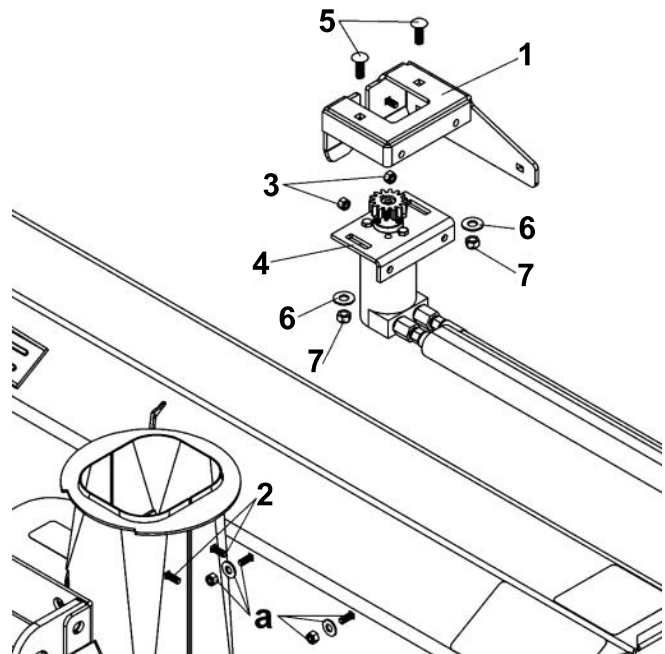
Install the motor support (item 1) using the two 1/4 x 3/4" carriage bolts (item a) on the snowblower and secure in place with two flat washers and nylon insert lock nuts (item a) that were previously removed.

Install two 1/4 x 3/4" carriage bolts (item 2) inside the chute support as shown and two 1/4" nylon insert lock nuts (item 3).
Tighten in place.

Hydraulic motor installation:

Install the hydraulic motor assembly (item 4) on the motor support using two 5/16 x 1" carriage bolts (item 5), two 3/8" flat washers (item 6) and two 5/16" nylon insert lock nuts (item 7).

Do not tighten the bolts right now.



Install the support and the hydraulic motor.

ASSEMBLY

STEP 3 CHUTE INSTALLATION

Refer to parts breakdown for identification of the parts.

Install the rotation rings:

Place the metal rotation ring (item 1) over the opening for the chute as shown.

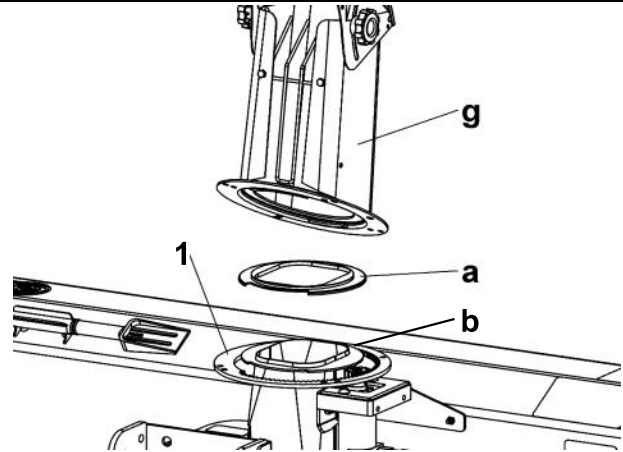
IMPORTANT: Make sure to place the rotation ring in the right direction in accordance with a chute discharge on the **right side** of the snowblower (see figure A).

Install the nylon rotation ring (item a) (included with the snowblower) over the opening for the chute as shown.

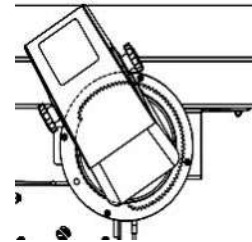
Chute Installation:

Place the assembled chute (item g) opening towards the back of the snowblower over the opening as shown.

Fit the back under the ring of the snowblower (item b) and turn the chute towards the front to lock into place.



Install rotation rings and chute



Chute discharge on the **right side** of the snowblower

Check orientation of the chute

Install the metal rotation ring:

IMPORTANT: Make sure to place the holes of the rotation ring (item 1) in line with the holes at the base of the chute (item g) as shown in figure A.

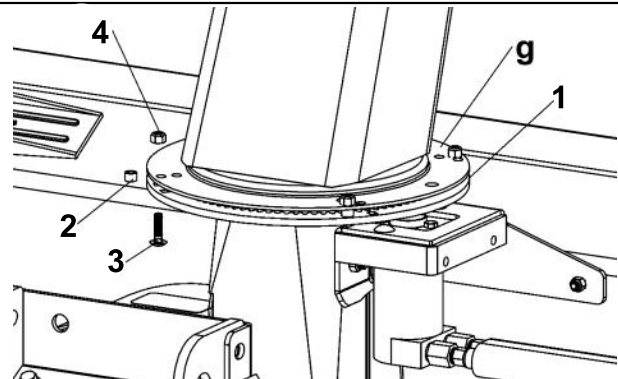
Install the metal rotation ring (item 1) under the chute (item g) by using four spacers (item 2), four 1/4 x 1" carriage bolts (item 3) and four 1/4" nylon insert lock nuts (item 4).

Use the two 1/4 x 1 1/4" bolts (item 5) to insert the teeth of the rotation gear (item 6) in the teeth of the metal rotation ring.

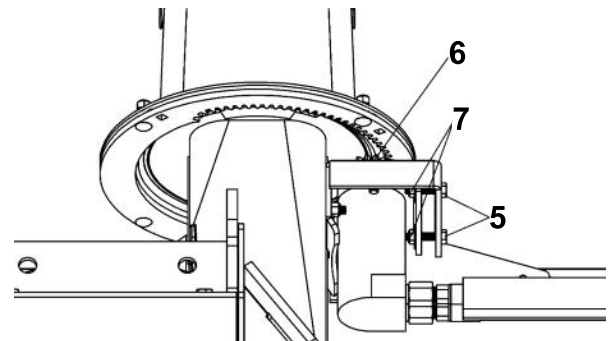
Make sure the gear of the motor, rests lightly inside of the rotation ring. Tighten the bolts.

IMPORTANT: Do not tighten the adjustment bolts (item 5) too much. Over tightening the bolts could cause damage to the rotation ring.

Lock the bolts (item 5) with the nuts (item 7)



Secure the rotation ring and the chute together



Lock the gear into position

ASSEMBLY

STEP 4 HYDRAULIC HOSES INSTALLATION

1. Route hydraulic hose to the tractor hydraulic quick connect in a way to avoid damage to hose and allow movement of any components. Example : avoid any contact with any sharp edges, hot surfaces, any moving part of any component of the vehicle that may damage the hose during installation, operation or maintenance
2. Clean quick couplers and connect the quick coupler to the tractor quick couplers. Make sure this is the same coupler size and type and fully engaged.
3. Use the hydraulic control to activate the accessory. If the movement is the opposite than what expected, switch hose on the tractor coupler.
4. Purge the hydraulic system (see purging hydraulic system section)

DANGER

To avoid serious injury or death:

- Escaping hydraulic oil under pressure can have sufficient force to penetrate skin, causing serious personal injury. If injured by escaping fluid, obtain medical treatment immediately.
- Wear protective gloves and safety glasses or goggles when working with hydraulic system.
- Before disconnecting hydraulic line or performing work, relieve all hydraulic pressure
- Visually check for hydraulic leaks and broken, missing, or malfunctioning parts and make necessary repairs before applying pressure to the system. Do the same validation after applying pressure to the system (use a piece of cardboard not your hands to detect leaks).

STEP 5 PURGING HYDRAULIC SYSTEM

Hydraulic components on the accessory can contain air. The air needs to be purged from component

1. Raise the accessory 6" off the ground
2. Activate the hydraulic control to cycle all possible movement of the accessory several times until the movement is stable.

STEP 6 ASSEMBLY VALIDATION

Once the assembly is installed and connected with the vehicle, make sure the chute turns toward the front of the snowblower and not towards the back (towards the tractor). If the chute turns toward the back, the rotation ring must be installed in the other direction.

If chute complete rotation from left to right take less than 5 seconds, install flow reducer on the hydraulic line. This is to ensure sure proper control of the chute



DANGER



TO PREVENT SERIOUS INJURIES OR DEATH:
Snow discharge shall never be in direction of the operator in any adjustment of the chute. If this is possible do not operate and correct the assembly to avoid this.

ASSEMBLY

MANUAL CHUTE ROTATION TYPE ONLY

STEP 1

HYDRAULIC HOSES PREPARATION AND ASSEMBLY

HYDRAULIC HOSES AND ADAPTORS

Since the connectors and the length of the hydraulic hoses vary a lot from one tractor to another and according to the different options installed on the vehicle, you must make sure that the hoses which are included in this kit are the right length.

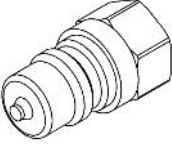

If needed, you must obtain locally the appropriate hydraulic hose extensions and hydraulic adaptors that fit your tractor.

Before starting the installation:

- Read and understand the instructions
- Please sort and identify all the hardware with the packing lists.

Connect the hydraulic adaptors on the hydraulic hoses.

If available, follow the instructions included with the adaptor kit that corresponds to your vehicle (700740, 700741, or other).

700740	700741
Quick nipple 3/8" ISO A	Quick coupler 3/8" ISO A
	



WARNING



TO PREVENT INJURIES:

If you suspect a oil leak in the hoses **NEVER** use you hand to locate it. Use a piece of cardboard or a piece of wood.

STEP 2

REMOVE MANUAL ROTATION KIT

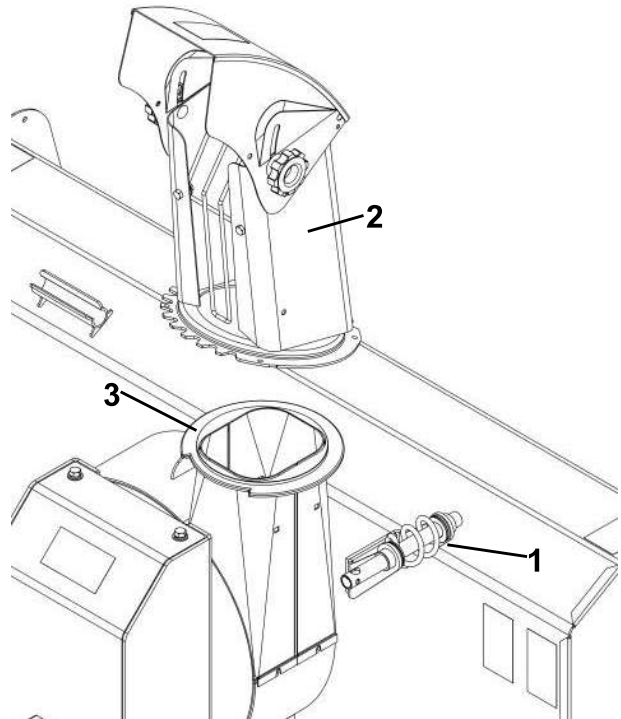
Remove manual rotation screw

Remove manual rotation screw (item 1) by removing the bolts and nuts that hold the assembly to the chute discharge.

Remove the chute

Turn the chute towards the back and tip it towards the front of the accessory in order to free the chute (item 2). Put the chute aside.

Remove and **save** the plastic rotation ring (item 3).



Remove manual rotation kit

ASSEMBLY

STEP 3

MOTOR SUPPORT INSTALLATION

Refer to parts breakdown for identification of the parts.

Install the motor support on the chute discharge. (Figure A)

Place the motor support (item 1) against the chute discharge and install using the holes for the manual rotation removed at step 2; two carriage bolts $1/4'' \times 1''$ (item 2) and two nylon lock nuts $1/4''$ (item 3).

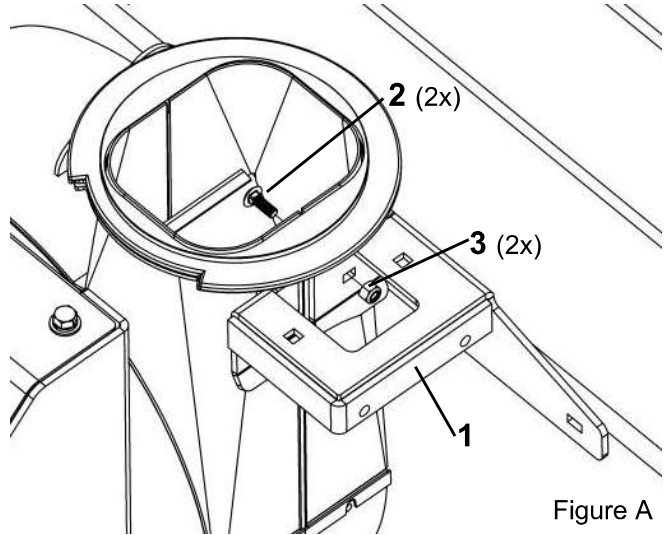


Figure A

IMPORTANT: Make sure the top of the motor support is parallel to the top of the accessory.

Drill the back of the accessory.

Drill the back of the accessory at the center of both positions (A) using a $9/32''$ (7mm) drill bit (as shown on Figure B).

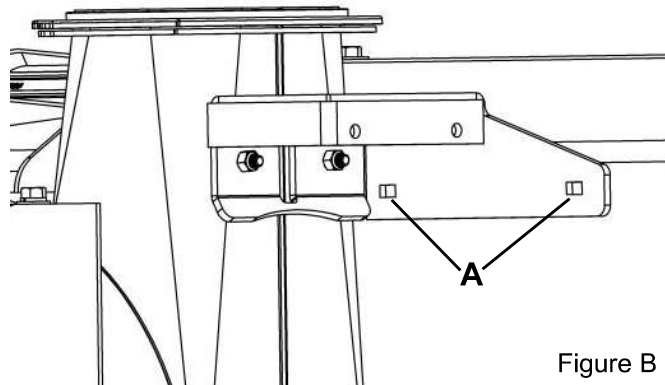


Figure B

Finish the installation.

Install the motor support as shown (Figure C) using 2 hex. bolts $1/4'' \times 3/4''$ (item 4), two flat washers $5/16''$ (item 5) and two nylon lock nuts $1/4''$ (item 6).

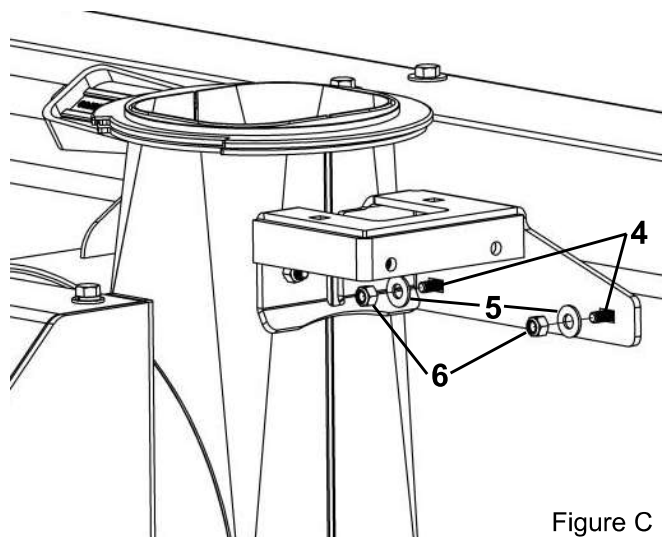


Figure C

ASSEMBLY

STEP 4 MODIFY THE HYDRAULIC MOTOR ASSEMBLY

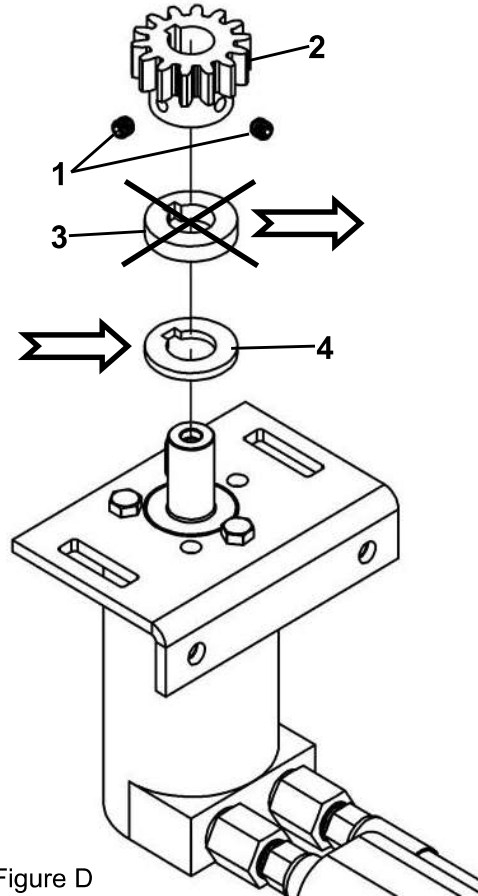
Refer to parts breakdown for identification of the parts.

Change the gear's spacer

Loosen the set screws (item 1) and remove the gear (item 2).

Remove the spacer 107471 already installed (item 3) and replace with the tinner spacer 108338 (item 4).

Reassemble as shown (Figure D) and tighten the set screws (item 1).



STEP 5 INSTALL THE CHUTE

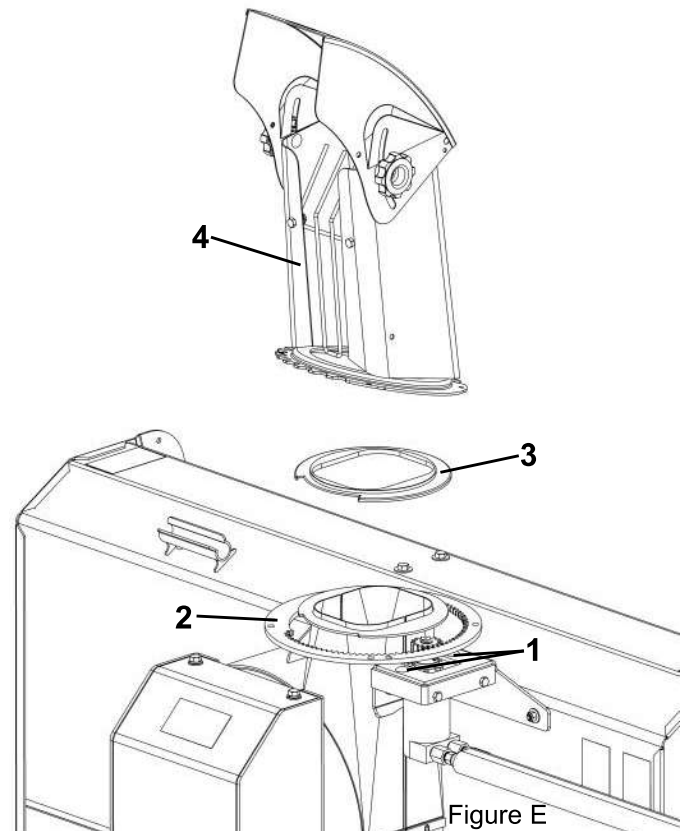
Refer to parts breakdown for identification of the parts.

Loosen the hydraulic motor tensioner (item 1).
Install the metal rotation ring (item 2) over the chute discharge.

Install the plastic rotation ring (item 3) saved from step 2 over the chute discharge as shown.

Place the assembled chute (item 4) opening towards the back of the snowblower over the opening as shown.

Fit the back under the ring of the snowblower and turn the chute towards the front to lock into place.



ASSEMBLY

STEP 6

INSTALL THE CHUTE SUPPORT

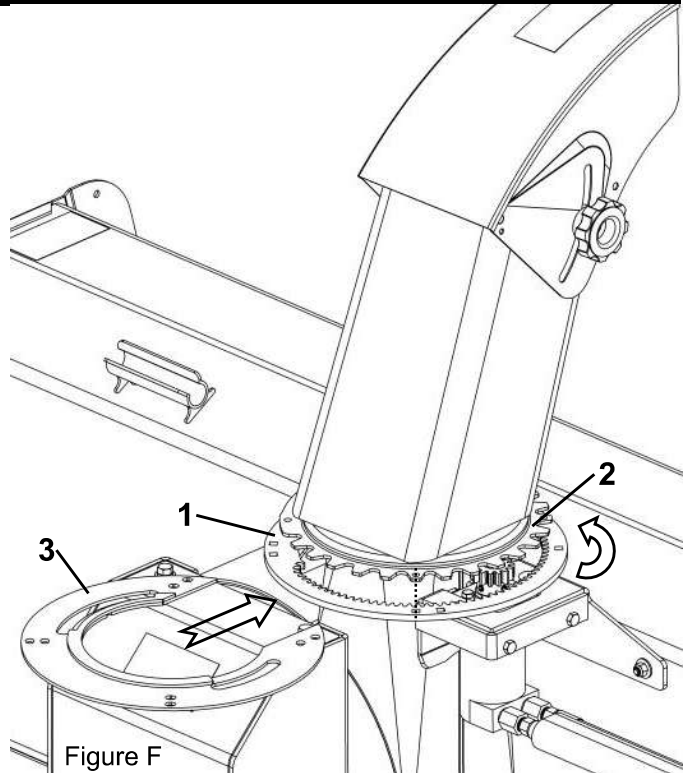
Refer to parts breakdown section for parts identification.

Turn the chute towards the front of the accessory.

IMPORTANT: Make sure to place the holes in the rotation ring (item 1) even with the holes at the bottom of the chute (item 2) as shown.

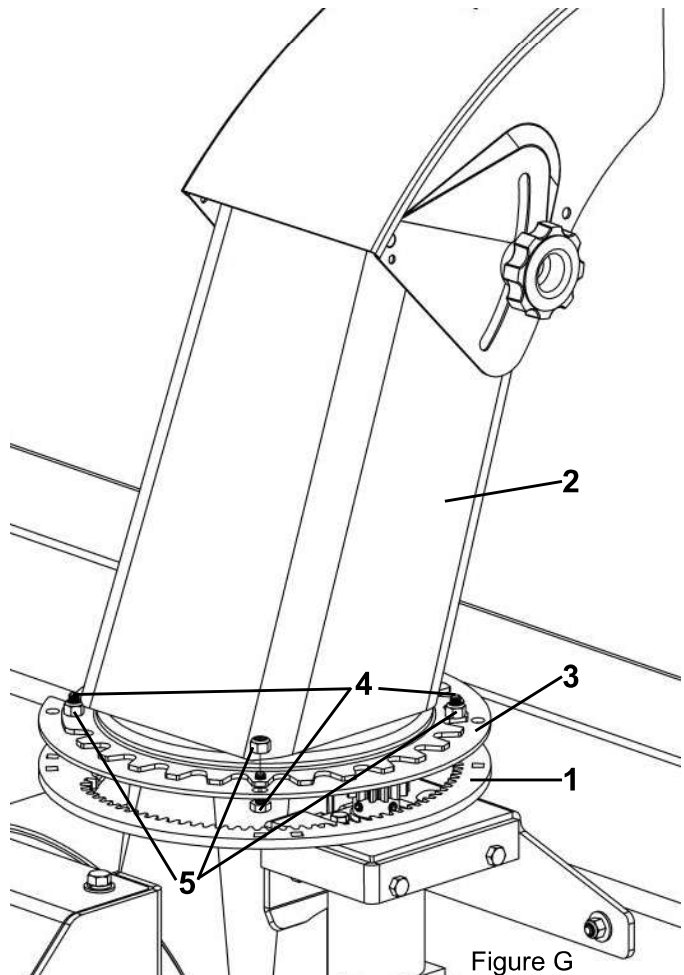
Insert the chute support (item 3) as shown. Between the rotation ring (item 1) and the bottom of the chute (item 2) and rotate the chute support (item 3) 90° counter-clockwise.

Note: When properly installed; the chute support (item 3) opening is pointing to the left (as Figure G).



Install the chute support.

Install the chute support (item 3) to the chute (item 2) as shown (Figure G) using four hex. bolts 1/4" x 3/4" (item 4) and four nylon lock nuts 1/4" (item 5).



ASSEMBLY

STEP 7

INSTALL THE ROTATION RING

Refer to parts breakdown for identification of the parts.

IMPORTANT: Make sure the holes in the rotation ring (item 1) are aligned with the holes of the chute support (item 2).

Insert four spacers (item 4) between the metal rotation ring (item 1) and the chute support (item 3) as shown.

Insert from under the rotation ring four carriage bolts 1/4 x 1 1/4" (item 5) as shown.

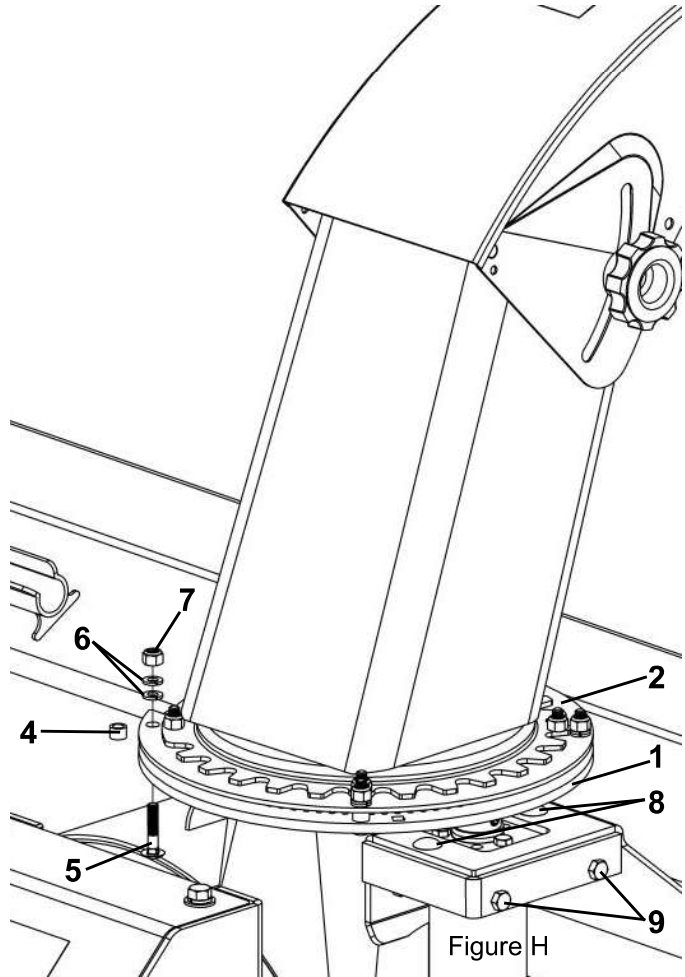
Secure in place with eight lock washers 1/4" (item 6) and four nylon insert lock nuts 1/4" (item 7) as shown.

Loosen the two bolts (item 8) to adjust the teeth of the rotation motor's sprocket in the teeth of the metal rotation ring.

Use the adjustment bolts (item 9) to make sure the sprocket rests lightly inside the metal rotation ring.

Tighten the bolts (item 8). Lock the adjustment bolts (item 9) with the nuts.

IMPORTANT: Do not tighten to firmly the adjustment bolts (item 9). Tightening the bolts too much may damage the rotation ring.



ASSEMBLY

STEP 8 HYDRAULIC HOSES INSTALLATION

1. Route hydraulic hose to the tractor hydraulic quick connect in a way to avoid damage to hose and allow movement of any components. Example : avoid any contact with any sharp edges, hot surfaces, any moving part of any component of the vehicle that may damage the hose during installation, operation or maintenance
2. Clean quick couplers and connect the quick coupler to the tractor quick couplers. Make sure this is the same coupler size and type and fully engaged.
3. Use the hydraulic control to activate the accessory. If the movement is the opposite than what expected, switch hose on the tractor coupler.
4. Purge the hydraulic system (see purging hydraulic system section)

DANGER

To avoid serious injury or death:

- Escaping hydraulic oil under pressure can have sufficient force to penetrate skin, causing serious personal injury. If injured by escaping fluid, obtain medical treatment immediately.
- Wear protective gloves and safety glasses or goggles when working with hydraulic system.
- Before disconnecting hydraulic line or performing work, relieve all hydraulic pressure
- Visually check for hydraulic leaks and broken, missing, or malfunctioning parts and make necessary repairs before applying pressure to the system. Do the same validation after applying pressure to the system (use a piece of cardboard not your hands to detect leaks).

STEP 9 PURGING HYDRAULIC SYSTEM

Hydraulic components on the accessory can contain air. The air needs to be purged from component

1. Raise the accessory 6" off the ground
2. Activate the hydraulic control to cycle all possible movement of the accessory several times until the movement is stable.

STEP 10 ASSEMBLY VALIDATION

Once the assembly is installed and connected with the vehicle, make sure the chute turns toward the front of the snowblower and not towards the back (towards the tractor). If the chute turns toward the back, the rotation ring must be installed in the other direction.

If chute complete rotation from left to right take less than 5 seconds, install flow reducer on the hydraulic line. This is to ensure sure proper control of the chute



DANGER



**TO PREVENT SERIOUS INJURIES OR DEATH:
Snow discharge shall never be in direction of the operator in any adjustment of the chute. If this is possible do not operate and correct the assembly to avoid this.**

OPERATION

Chute rotation control

The chute control is the loader hydraulic control lever.

Make sure the movement of the chute go left when the control lever is at left position and right when control lever is at right. If this is not the case review the hydraulic hoses installation

Follow instruction in your vehicule/loader for specific instruction on your control lever.

Before blowing any snow become familiar with the control to ensure good control of the chute while operating the snowblower.



DANGER



TO PREVENT SERIOUS INJURIES OR DEATH:
Snow discharge shall never be in direction of the operator in any ajustement of the chute. If this is possible do not operate and correct the assembly to avoid this.

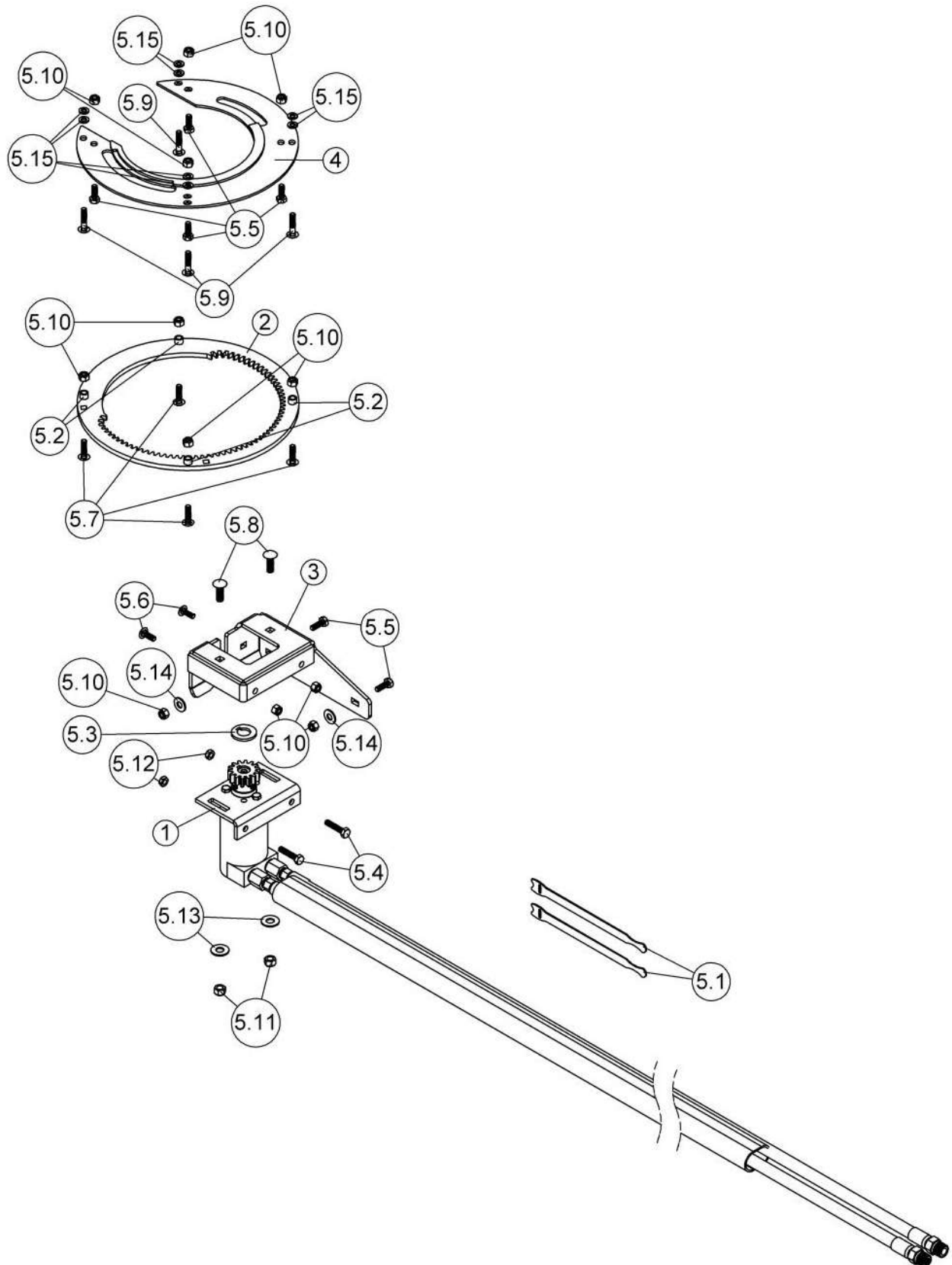


DANGER



TO PREVENT SERIOUS INJURIES OR DEATH:
If chute complete rotation from left to right take less than 5 secondes, install flow reducer on the hydraulic line. This is to ensure sure proper control of the chute

NOMENCLATURE ET LISTE DE PIÈCES / PARTS BREAKDOWN & PARTS LIST
Ensemble de rotation hydraulique type "R" / Hydraulic rotation kit "R" type # 700661-2



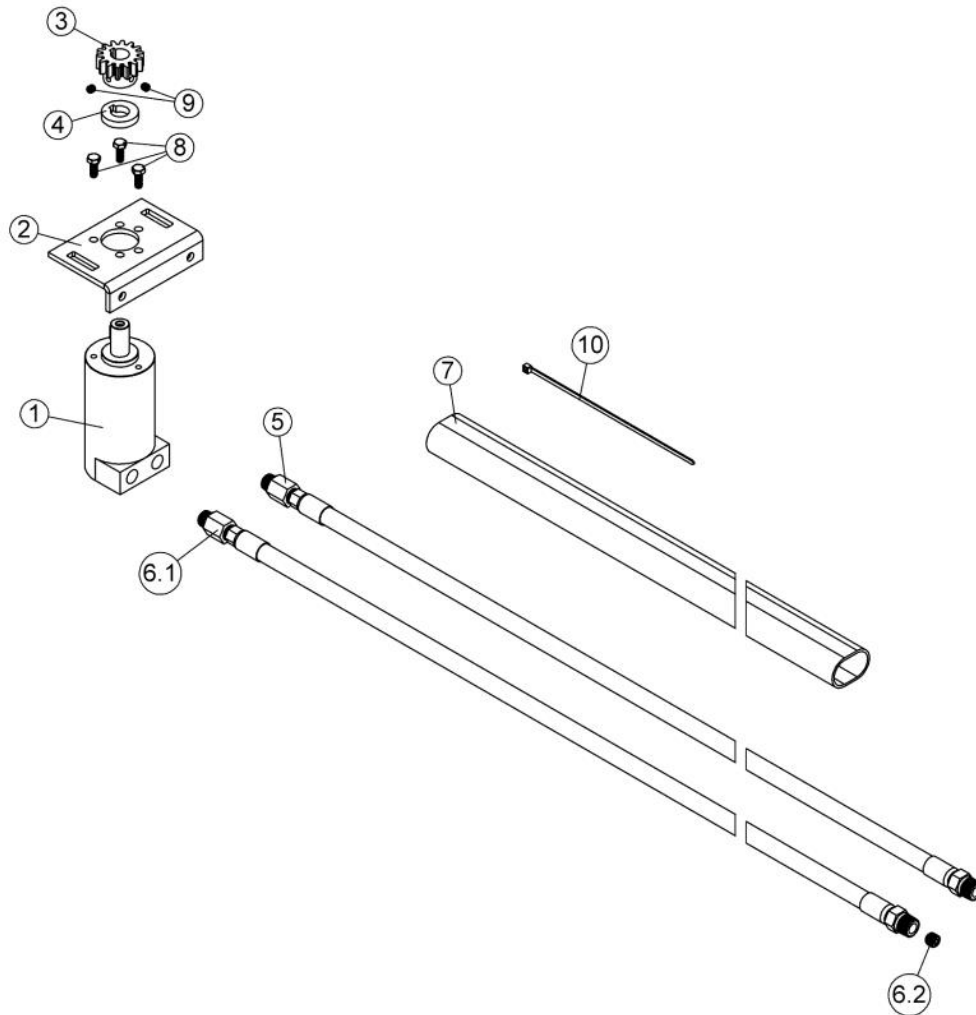
O/L = Obtenir localement / Obtain Locally

NOMENCLATURE ET LISTE DE PIÈCES / PARTS BREAKDOWN & PARTS LIST
Ensemble de rotation hydraulique type "R" / Hydraulic rotation kit "R" type # 700661-2

REF.	ENGLISH DESCRIPTION	DESCRIPTION FRANÇAISE	QTY.	PART#
1	Hydraulic motor assembly	Moteur hydraulique assemblé	1	501018
2	Rotation ring	Anneau de rotation	1	105888
3	Motor support	Support-moteur	1	106742
4	Chute support	Support de chute	1	108337
5	Hardware bag	Sac de quincaillerie	1	S_109368_EN_FR
5.1	Hook-it cable ties	Attache câble auto-grippante	2	104408
5.2	Spacer	Espaceur	4	105889
5.3	Spacer	Espaceur	1	108338
5.4	Hex. bolt 1/4" n.c. x 1 1/4" GR5 FULLY THREADED	Boulon hex. 1/4" n.c. x 1 1/4" GR5 FILETE COMPLET	2	O/L (300NC.5P.F_1-4x1-1-4)
5.5	Hex. bolt 1/4" n.c. x 3/4" GR5	Boulon hex. 1/4" n.c. x 3/4" GR5	6	O/L (300NC.5P_1-4x3-4)
5.6	Carriage bolt 1/4" n.c. x 3/4 " GR5	Boulon à carrosserie 1/4" n.c. x 3/4" GR5	2	O/L (320NC.5P_1-4x3-4)
5.7	Carriage bolt 1/4" n.c. x 1 " GR5	Boulon à carrosserie 1/4" n.c. x 1 " GR5	4	O/L (320NC.5P_1-4x1)
5.8	Carriage bolt 5/16" n.c. x 1 " GR5	Boulon à carrosserie 5/16" n.c. x 1 " GR5	2	O/L (320NC.5P_5-16x1)
5.9	Carriage bolt 1/4" n.c. x 1 1/4" GR5	Boulon à carrosserie 1/4" n.c. x 1 1/4" GR5	4	O/L (320NC.5P_1-4X1-1-4)
5.10	Nylon Insert lock Nut 1/4" n.c.	Écrou à garniture de nylon 1/4" n.c.	12	O/L (335NC.P_1-4)
5.11	Nylon Insert lock Nut 5/16" n.c. GR5	Écrou à garniture de nylon 5/16" n.c. GR5	2	O/L (335NC.P_5-16)
5.12	Nylon insert lock nut 1/4" n.c. (thin)	Écrou à garniture de nylon 1/4" n.c. (mince)	2	O/L (336NC.P_1-4)
5.13	Flat washer 3/8" hole	Rondelle plate 3/8" trou	2	O/L (360.P_3-8T)
5.14	Flat washer 5/16" hole	Rondelle plate 5/16" trou	2	O/L (360.P_5-16T)
5.15	Lock washer 1/4"	Rondelle de blocage 1/4"	8	O/L (362.P_1-4)
5.16	List of bag	Liste de sac	1	-

O/L = Obtenir localement / Obtain Locally

PARTS BREAKDOWN & PARTS LIST HYDRAULIC MOTOR ASSEMBLY #501018















REF.	ENGLISH DESCRIPTION	DESCRIPTION FRANÇAISE	QTY.	PART#
1	Hydraulic motor with key	Moteur Hydraulique avec clé	1	105783
2	Support plate	Plaque de support	1	105886
3	Gear	Pignon	1	105887
4	Spacer	Espaceur	1	107471
5	Hydraulic hose	Flexible hydraulique	1	106489
6	Hydraulic hose assembly	Flexible hydraulique assemblé	1	106492
6.1	Hydraulic hose	Flexible hydraulique	1	106490
6.2	Orifice	Orifice calibré	1	105916
7	Nylon sleeving	Gaine de nylon	1	106459
8	Hex. bolt M6 x 1.00 x 16 GR8.8	Boulon hex. M6 x 1.00 x 16 GR8.8	3	O/L (310.8.8P_M6X1.00X16)
9	Socket head set screw 1/4" n.c. x 1/4" (knurled)	Vis à pression à tête plate 6PC 1/4" n.c. x 1/4" (moletée)	2	O/L (391NC.N_1-4x1-4)
10	Tie wrap 8"	Attache de nylon 8"	1	O/L (tiewrap_8)

O/L = Obtain Locally

TORQUE SPECIFICATION TABLE

- The following table shows the minimum torque requirement
- Maximum is 15% more than the minimum (example: min100 Nm -> max is 115Nm)
- If specific thread is not specified in the part list or manual, the bolt thread is coarse
- N m = Newton x meter
- Ft-lb = foot pounds

IMPERIAL THREAD														
Nominal Thread Diameter	UNC								UNF					
	Thread / inch	Grade 2		Grade 5		Grade 8		Thread / inch	Grade 2		Grade 5		Grade 8	
												N m	Ft-lb	N m
1/4"	20	7.4	5.6	11	8	16	12	28	8.5	6	13	10	18	14
5/16"	18	15	11	24	17	33	25	24	17	13	26	19	37	27
3/8"	16	27	20	42	31	59	44	24	31	22	47	35	67	49
7/16"	14	43	32	67	49	95	70	20	49	36	75	55	105	78
1/2"	13	66	49	105	76	145	105	20	75	55	115	85	165	120
9/16	12	95	70	150	110	210	155	18	105	79	165	120	235	170
5/8	11	130	97	205	150	285	210	18	150	110	230	170	325	240
3/4	10	235	170	360	265	510	375	16	260	190	405	295	570	420
7/8	9	225	165	585	430	820	605	14	250	185	640	475	905	670
1	8	340	250	875	645	1230	910	12	370	275	955	705	1350	995
1-1/8	7	480	355	1080	795	1750	1290	12	540	395	1210	890	1960	1440
1-1/4	7	680	500	1520	1120	2460	1820	12	750	555	1680	1240	2730	2010
1-3/8	6	890	655	1990	1470	3230	2380	12	1010	745	2270	1670	3680	2710

METRIC THREAD														
Nominal Thread Diameter	COARSE THREAD								FINE THREAD					
	Pitch (mm)	Class 5.8		Class 8.8		Class 10.9		Pitch (mm)	Class 5.8		Class 8.8		Class 10.9	
									N m	Ft-lb	N m	Ft-lb	N m	Ft-lb
M5	0.8	4	3	6	5	9	7	-	-	-	-	-	-	-
M6	1	7	5	11	8	15	11	-	-	-	-	-	-	-
M8	1.25	17	12	26	19	36	27	1	18	13	28	21	39	29
M10	1.5	33	24	52	39	72	53	0.75	39	29	61	45	85	62
M12	1.75	58	42	89	67	125	93	1.25	58	42	95	70	135	99
M14	2	92	68	145	105	200	150	1.5	99	73	155	115	215	160
M16	2	145	105	225	165	315	230	1.5	155	115	240	180	335	245
M18	2.5	195	145	310	230	405	300	1.5	220	165	350	260	485	355
M20	2.5	280	205	440	325	610	450	1.5	310	230	650	480	900	665
M24	3	480	355	760	560	1050	780	2	525	390	830	610	1150	845
M30	3.5	960	705	1510	1120	2100	1550	2	1060	785	1680	1240	2320	1710



***WHEN PERFORMANCE
& DEPENDABILITY
ARE NON NEGOTIABLE!***

Bercomac Limitée
92, Fortin North, Adstock, Quebec, Canada, G0N 1S0

WWW.BERCOMAC.COM

PRINTED IN CANADA

(ORIGINAL NOTICE)