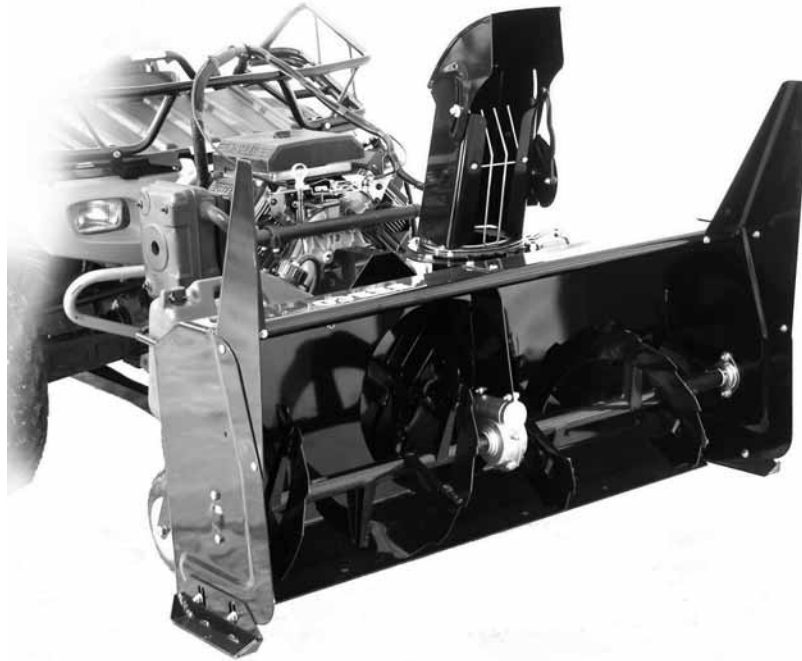




**OWNER'S MANUAL**  
***Model Number***  
***700360-4***



***BERCO PRESTIGE***  
***Two Stage 54" Snowblower***  
***For***  
***ALL TERRAIN VEHICLES***

- \* ASSEMBLY
- \* OPERATION

- \* REPAIR PARTS
- \* MAINTENANCE

**CAUTION:**  
READ & FOLLOW ALL SAFETY RULES & INSTRUCTIONS BEFORE  
OPERATING YOUR EQUIPMENT

# LIMITED WARRANTY

## **Conditions and Products Covered:**

BERCOMAC guarantees any part of the product or accessory manufactured by BERCOMAC and found in the reasonable judgment of BERCOMAC to be defective in material and or workmanship will be repaired or replaced by an authorized dealer without charge up to our maximum labor rates and pre-established times. For replacement parts only standard ground freight services are covered. This warranty extends to the original retail purchaser only and is not transferable to any subsequent purchasers.

### **Warranty Period**

(from date of the original retail purchase):

- Residential use: 1 year
- Commercial or rental use: 90 days

**Exceptions Noted Below:** the following items are guaranteed by the original manufacturer and have their own warranty, conditions and limited time.

- Tire Chains: 90 days
- Engines (installed on BERCO equipment): 2 years
- Engines (sold separately): Validate with the dealer.

Please refer to the engine manufacturer's warranty statement included with the unit. Bercomac is not authorized to handle warranty adjustments on engines.

## **Items and Conditions NOT Covered:**

This warranty does not cover the following:

- Pick-up or delivery charges or in-home services fees.
- Any damage or deterioration of the unit, parts and or finish of these due to normal use, wear and tear, or exposure.
- Cost of regular use or maintenance service or parts, such as gas, oil, lubricants, tune-up parts, and adjustments.
- Any part or accessory which has been altered, modified, misused, neglected, accidentally damaged or not properly installed, maintained, stored or repaired not in accordance with the instructions in the owner's manual.
- Repair due to normal wear and or any wear items such as shear pins, bolts, belts, etc.
- Expedited freight fee services for replacement parts.
- Shear bolts and shear pins are to be considered as a preventive measure not as an assured protection, any damages resulting from the lack of shear bolts breakage are not covered.

NOTE: All warranty work must be performed by an authorized

**Note:** BERCOMAC reserves the right to change or improve the design of any part or accessory without assuming any obligation to modify any product previously manufactured.

## **Instructions for Obtaining Warranty Services:**

Contact dealer where equipment was purchased or any other Authorized Service Dealer to arrange service at their dealership. Bring the product and your proof of purchase (sales receipt). Requests for warranty claims must be carried out through the same distribution network used to purchase the product.

dealer using original (manufacturer) replacement parts.

## **Owner's Responsibilities:**

Any defective equipment or part must be returned to an authorized dealer within the warranty period for repairs. In the event that defective merchandise must be returned to manufacturer for repairs, the dealer must first obtain a written authorization from either KIMPEX or BERCOMAC, freight fees are prepaid prior to the shipment. This warranty extends only to equipment operated under normal conditions. To validate a warranty claim, it is the user's responsibility to maintain and service the unit as specified in the owner's manual or to have the unit serviced at their dealer at their expense.

## **General Conditions:**

The sole liability of BERCOMAC with respect to this warranty shall be strictly and exclusively repair and replacement as mentioned herein. BERCOMAC shall not have any liability for any other costs, loss or damage, including but not limited to, any incidental or consequential loss or damage.

In particular, without being limited to, BERCOMAC shall have no liability or responsibility for:

- Travel time, overtime, after hours time or other extraordinary repair charges or relating to repairs and or replacements outside of normal business hours.
- Rental of like or similar replacement equipment during the period of any, repair or replacement work.
- Any communicating or travel charges.
- Loss or damage to person or property other than that covered by the terms of this warranty.
- Any claims for lost revenue, lost profit or any similar costs as a result of damage or repair.
- Attorney's fees.

BERCOMAC'S responsibility in respect to claims is limited to making the required repairs or replacement without charge up to our maximum labor rates and pre-established times and no claim of breach of warranty shall be cause for cancellation or rescission of the contract of sale of any product or accessory.

This warranty gives you specific legal rights. You may also have other rights, which vary from state to state.

# TABLE OF CONTENTS

	PAGE
INTRODUCTION .....	2
SAFETY PRECAUTIONS .....	3
SAFETY DECALS .....	5
ASSEMBLY	
Step 1: Vehicle Preparation .....	7
Step 2: Subframe Preparation .....	7
Installing Winch Hook .....	10
Verify Skid Shoe Adjustment .....	10
Step 3: Engine Preparation .....	11
Saddle Preparation .....	11
OPERATION	
Operating the Snowblower .....	12
Electric Controls .....	12
Removing Snow .....	12
MAINTENANCE	
Maintenance .....	13
Adjustments .....	13
Lubrication .....	13
Cutting Edge Maintenance .....	13
Auger and Fan Shear Bolt Replacement .....	13
Dismounting the Snowblower .....	13
Storage .....	13
BELT REPLACEMENT .....	14
BELT ADJUSTMENTS .....	15
REPLACEMENT OF ONE OR TWO SECTIONS OF THE AUGER AND /OR GEAR BOX .....	17
TROUBLESHOOTING .....	18
TORQUE SPECIFICATION TABLE .....	19
PARTS BREAKDOWN AND PARTS LIST	
Rotation System with Chute .....	20
Saddle Assembly .....	22
Snowblower .....	24
Subframe .....	28

# INTRODUCTION

## TO THE PURCHASER

This new attachment was carefully designed to give years of dependable service. This manual has been provided to assist in the safe operation and servicing of your attachment.

**NOTE:** All photographs and illustrations in the manual may not necessarily depict the actual models or attachment, but are intended for reference only and are based on the latest product information available at the time of publication.

Familiarize yourself fully with the safety recommendations and operating procedures before putting the machine to use. Carefully read, understand and follow these recommendations and insist that they be followed by those who will use this attachment.



**THIS SAFETY ALERT SYMBOL IDENTIFIES AN IMPORTANT SAFETY MESSAGE IN THIS MANUAL THAT HELPS YOU AND OTHERS AVOID PERSONAL INJURY OR EVEN DEATH. DANGER, WARNING, AND CAUTION ARE SIGNAL WORDS USED TO IDENTIFY THE LEVEL OF HAZARD. HOWEVER, REGARDLESS OF THE HAZARD, BE EXTREMELY CAREFUL.**

**DANGER:** Signals an extreme hazard that will cause serious injury or death if recommended precautions are not followed.

**WARNING:** Signals a hazard that may cause serious injury or death if the recommended precautions are not followed.

**CAUTION:** Signals a hazard that may cause minor or moderate injury if the recommended precautions are not followed.

Record your attachment serial number and purchase date in the section reserved below. Your dealer requires this information to give you prompt, efficient service when ordering replacement parts. Use only genuine parts when replacements are required.

If warranty repairs are required please present this registration booklet and original sales invoice to your selling dealer for warranty service.

**This manual should be kept for future reference.**

**Please check if you have received all the parts for your kit with the list of the bag and the list of the box.**

**SERIAL NUMBER :** \_\_\_\_\_

**PURCHASE DATE :** \_\_\_\_\_

***In this manual, right and left sides are determined by sitting on the A.T.V. seat facing forward.***

**In this manual, "attachment" means accessories that you install on the A.T.V. such as a snowblower.**

# SAFETY PRECAUTIONS

Careful operation is your best insurance against an accident. Read this section carefully before operating the A.T.V. and snowblower. This snowblower is capable of amputating hands and feet and throwing objects. Failure to observe the following safety instructions could result in serious injury. All operators, no matter how experienced they may be, should read this and other manuals related to the A.T.V. and attachments before operating. It is the owner's legal obligation to instruct all operators in safe operation of the snowblower.

## TRAINING:



This symbol, "Safety Alert Symbol", is used throughout this manual and on the snowblower's safety labels to warn of the possibility of serious injury. Please take special care in reading and understanding the safety precautions before operating the snowblower or the A.T.V.

1. Read this owner's manual carefully. Be thoroughly familiar with the controls and proper use of the A.T.V. and snowblower. Know how to stop the unit and disengage the controls quickly.
2. Never allow children to operate snowblower nor the A.T.V. Never allow adults to operate snowblower nor the A.T.V. without proper instructions.
3. No one should operate the A.T.V. nor the snowblower while intoxicated or while taking medication that impairs the senses or reactions.
4. Keep the area of operation clear of all persons, particularly small children and pets.

## PREPARATION:

1. Thoroughly inspect the area where the snowblower is to be used and remove door mats, all foreign objects and the like.
2. Disengage all clutches and shift into neutral before starting engine.
3. Do not operate the snowblower without wearing adequate winter outer garments. Avoid loose fitting clothing that can get caught in moving parts. Wear footwear that will improve footing on slippery surfaces.
4. Handle fuel with care, it is highly flammable.
  - a) Use approved fuel container.
  - b) Never add fuel to a running engine or hot engine.
  - c) Fill fuel tank outdoors with extreme care. Never fill fuel tank indoors.
  - d) Never fill containers inside a vehicle, or on a truck or a trailer bed with a plastic liner. Always place containers on the ground, away from your vehicle, before filling.

- e) When practical, remove gas-powered equipment from the truck or trailer and refuel it on the ground. If this is not possible, then refuel such equipment on a trailer with a portable container, rather than from a gasoline dispenser nozzle.
  - f) Keep the nozzle in contact with the rim of the fuel tank or container opening at all times, until refueling is complete. Do not use a nozzle lock-open device.
  - g) Replace fuel cap securely and wipe up spilled fuel.
  - h) If fuel is spilled on clothing, change clothing immediately.
5. Adjust the height of the snowblower to clear gravel or crushed rock surface. This is done by adjusting the skid shoes.
  6. Never attempt to make any adjustments while the engine (motor) is running (except when specifically recommended by manufacturer).
  7. Let engine (motor) of the A.T.V. and snowblower adjust to outdoor temperatures before starting to clear snow.
  8. Always wear safety glasses or eye shields during operation or while performing an adjustment or repair to protect eyes from foreign objects that may be thrown from the machine.
  9. **Never modify the snowblower or any part without the written consent from the manufacturer.**

## OPERATION:

1. Do not put hands or feet near or under rotating parts. Keep clear of the discharge opening at all times.
2. Exercise extreme caution when operating on or crossing gravel drives, walks or roads. Stay alert for hidden hazards or traffic.
3. After striking a foreign object, stop the engine (motor), disconnect the wire from the spark plug(s) and keep wire away to prevent accidental starting. Thoroughly inspect the snowblower for any damage and repair damage before restarting and operating the snowblower.

# SAFETY PRECAUTIONS

4. If the unit should start to vibrate abnormally, stop the engine (motor) and check immediately for the cause. Vibration is generally a warning of trouble.
5. Stop the engine (motor) whenever you leave the operating position, before unclogging the impeller/collector housing or discharge chute, and when making repairs, adjustments or inspections.
- 6) Take all possible precautions when leaving the machine unattended. Disengage the power take-off, lower the attachment, set the parking brake, stop the engine and remove the key.
7. When cleaning, unclogging, repairing or inspecting, the snowblower & A.T.V. make certain the collector/impeller and all moving parts have stopped. Disconnect wire from the spark plug(s) and keep wire away to prevent accidental starting.
8. Do not run the engine indoors, except when starting the engine and for transporting the snowblower in or out of the building. Do not operate or let motor run in a storage area without ventilation because gas contains carbon monoxide which is odourless, colorless and can cause death.
9. Do not clear snow across the face of slopes; go up and down. Exercise extreme caution when changing direction on slopes. Do not attempt to clear steep slopes.
- 10.Never operate the snowblower without proper guards, plates, or other safety protective devices in place.
- 11.Never direct discharge at bystanders or operate the snowblower near glass enclosures, automobiles, window wells, drop-offs, and the like without proper adjustment of the snow discharge angle. Never allow anyone including children and pets in the clearance area.
- 12.Do not overload the machine capacity by attempting to clear snow at too fast a rate. Let the snowblower ingest snow at its own rate.
- 13.Never operate the snowblower at high transport speeds on slippery surfaces. Look behind and use care when backing.
- 14.Do not carry passengers.
- 15.Disengage power to the collector/impeller to stop all rotating parts when the snowblower is transported or not in use.

16. Use only accessories approved by the manufacturer of the snowblower (such as wheel chains, and the like).

17. Never operate the snowblower without good visibility or light.

## **CLEARING A CLOGGED DISCHARGE CHUTE:**

Hand contact with the rotating impeller inside the discharge chute is the most common cause of injury associated with snowblowers. Never use your hand to clean out the discharge chute.

## **To clear the chute:**

1. Lower snowblower to the ground and set parking brake.
2. **SHUT THE ENGINE OFF & REMOVE KEY!**
3. Wait 10 seconds to be sure the **all moving parts** such as the impeller blades have stopped moving.
4. Disconnect wire from the spark plug(s) and keep wire away to prevent accidental starting.
5. Always use a clean-out tool of at least 36" in length, **NOT YOUR HANDS.**

## **MAINTENANCE AND STORAGE**

1. Check shear bolts, engine mounting bolts, and other bolts at frequent intervals for proper tightness to be sure the snowblower is in safe working condition.
2. Never store the machine with fuel in the fuel tank inside a building where ignition sources are present such as hot water and space heaters, clothes dryers, and the like. Allow the engine to cool before storing in any enclosure.
3. Always refer to the owner's manual for the motor and snowblower when they are to be stored for an extended period.
4. Maintain or replace safety and instruction labels, as necessary.
5. Run the snowblower a few minutes after throwing snow to prevent freeze-up of the rotating parts such as collector/impeller.

**WHENEVER YOU SEE THIS SYMBOL**



**IT MEANS:  
WARNING!  
BECOME ALERT !  
YOUR SAFETY IS INVOLVED!**

# SAFETY DECALS

REPLACE IF DECALS ARE DAMAGED  
SEE PARTS BREAKDOWN FOR DECAL LOCATION



Decal # 102125



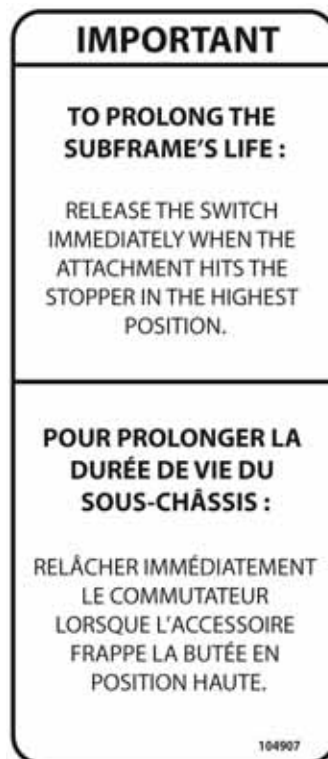
Decal # 102126



Decal # 102127



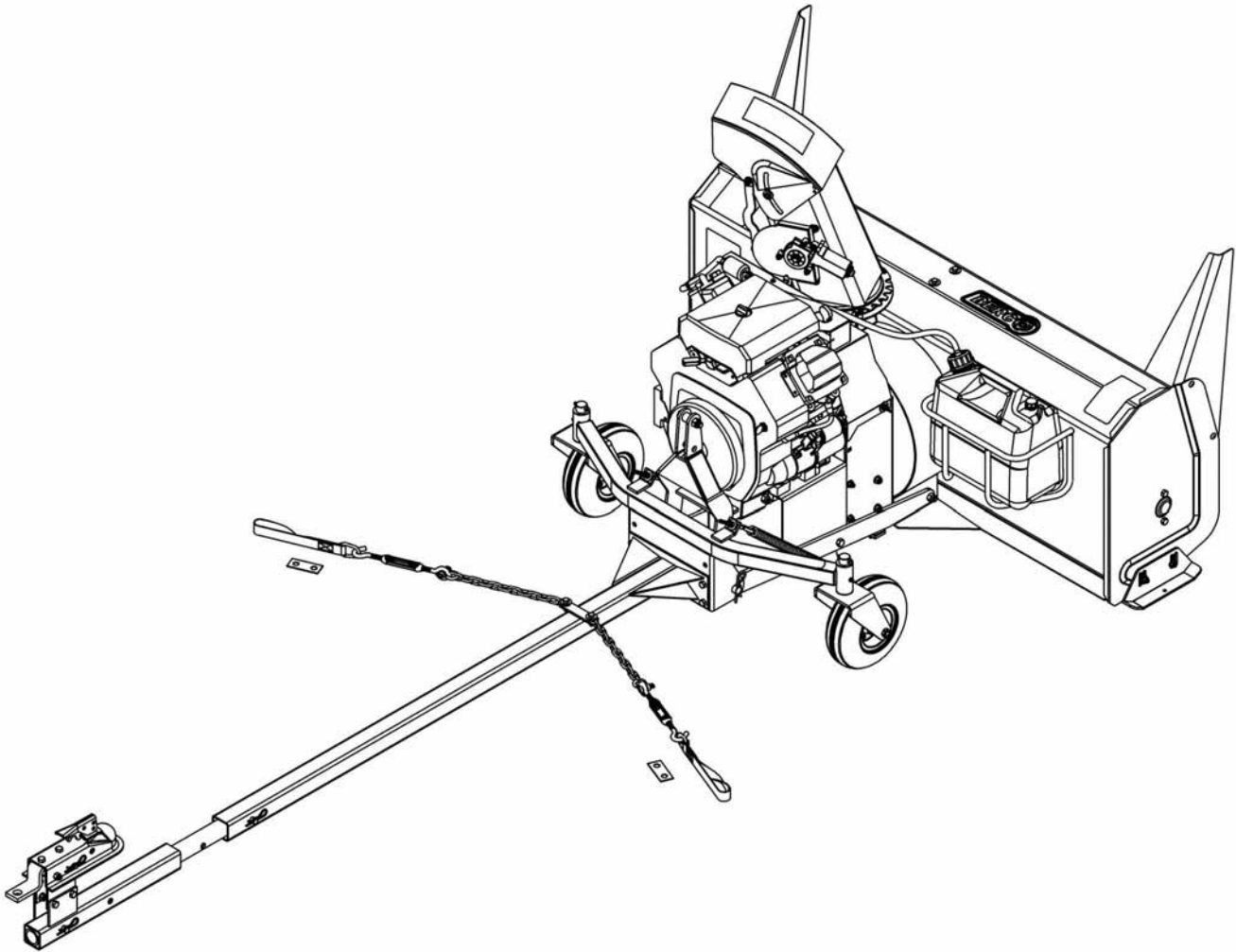
Decal # 103951



Décalque #104907

# ASSEMBLY

**IMPORTANT: TORQUE ALL BOLTS ACCORDING TO TORQUE SPECIFICATION TABLE (SEE TABLE OF CONTENTS) WHEN STATED: TIGHTEN FIRMLY. REFER TO PARTS BREAKDOWN SECTION FOR PART IDENTIFICATION.**



Overall view



# ASSEMBLY

## STEP 1

### VEHICLE PREPARATION:

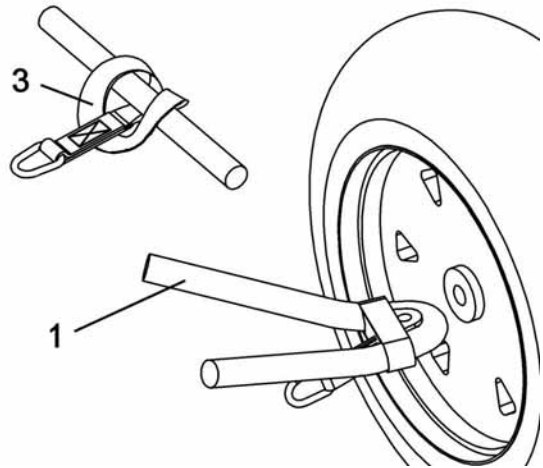
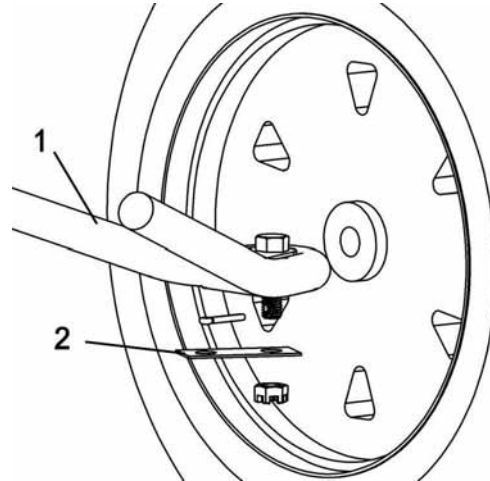
**NOTE:** A 1 7/8" tow hitch ball is required.

Remove the nut from the suspension arm (item 1) on the vehicle and install the bracket (item 2). Secure loosely with the original nut. Do the same for the other side.

If you can not install the brackets on your vehicle, install the lift strap (item 3) by looping it around the suspension arm (as shown ) on the vehicle.

Tighten the loop firmly.

Do the same for the other side.



Install the brackets or the straps

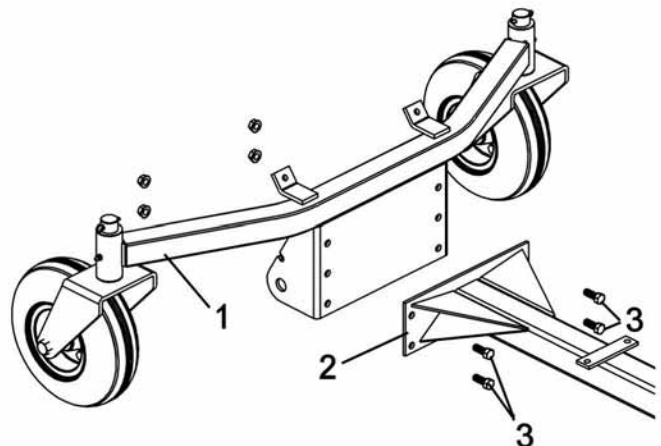
## STEP 2

### SUBFRAME PREPARATION:

Determine according to the height of the vehicle which set of holes to use to assemble the wheel support (item 1) to the subframe (item 2). The subframe must be parallel with the ground when the subframe is installed under the vehicle.

Install the wheel support (item 1) to the subframe (item 2) by using four 3/8" x 1" hex. bolts (item 3) and four hex nuts.

Tighten the bolts firmly.

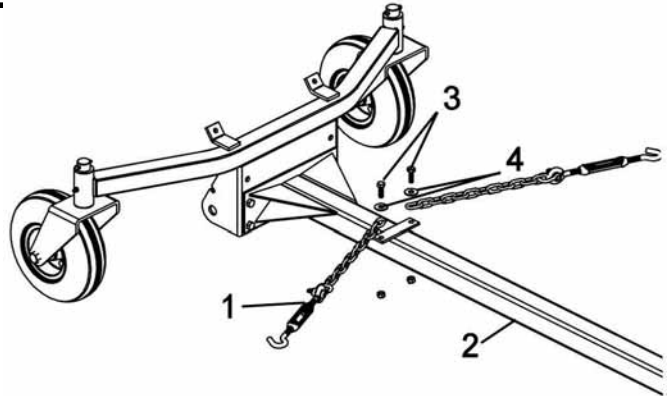


Install the wheel support

## ASSEMBLY

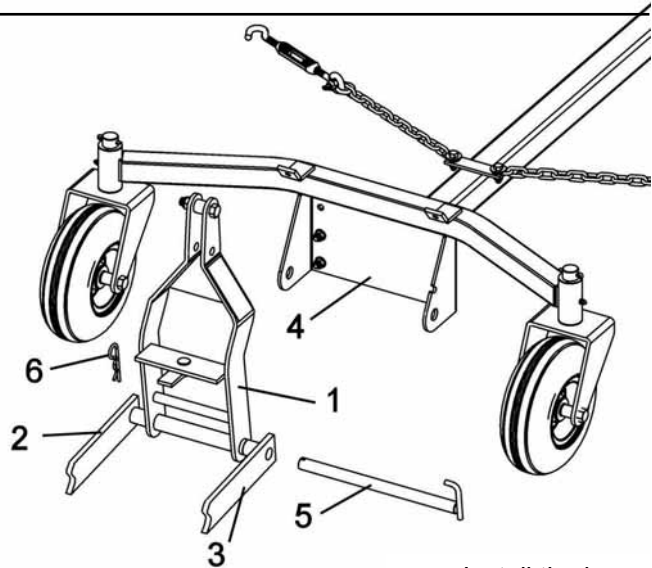
Install the assembled turnbuckles (item 1) on the subframe (item 2).  
Secure with two 5/16" x 1" hex bolts (item 3), two 3/8" flat washers (item 4) and two nylon insert lock nuts.

Tighten firmly.



Install the assembled turnbuckles

Install the lever (item 1), right hitch (item 2) and the left hitch (item 3) to the wheel support (item 4) with the pin (item 5) that is already installed on the snowblower. Make sure the pin is in the locked position.  
Secure with the 4mm hair pin (item 6).



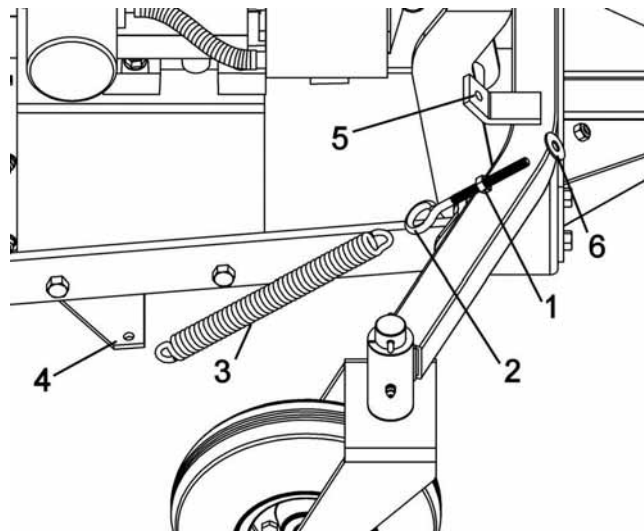
Install the lever

Insert 5/16" hex. nut (item 1) on each eye bolt (item 2). Tighten about half way down.

Insert the spring (item 3) into the spring link (item 4) and hook the other end into the eye bolt .

Insert the eye bolt into the hole (item 5). Secure with a flat washer 3/8" (item 6) and a nylon insert lock nut 5/16".

Tighten to apply tension on the spring.



Install the springs.

# ASSEMBLY

You have seven different positions on the subframe extension (item 1) (the extension can be inverted) to adjust the length of the subframe.

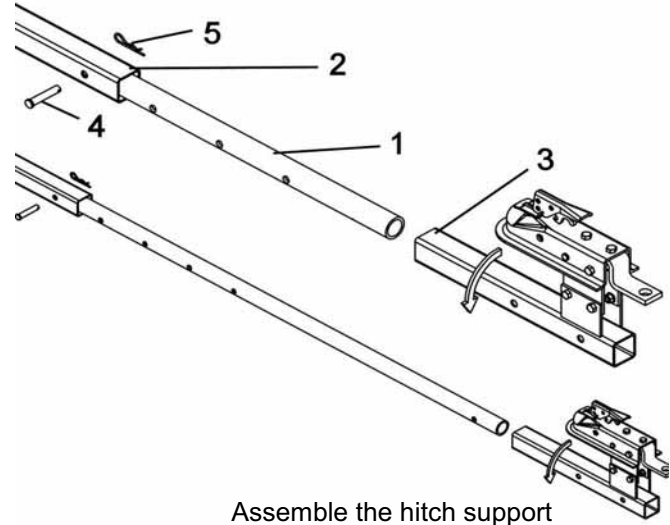
To choose the right adjustment, insert the subframe extension (item 1) into the subframe (item 2) and insert the hitch support (item 3) on the subframe extension. Do not secure.

Turn the hitch support to the side to facilitate installation.

Drive the vehicle over the subframe, make sure the caster wheels do not touch the front wheels on the vehicle.

Identify the right length and secure in place with a pin (item 4) and 3mm hair pin (item 5).

**IMPORTANT:** Make sure the extension is inserted to its maximum in the subframe in order to prevent premature damage to the subframe.



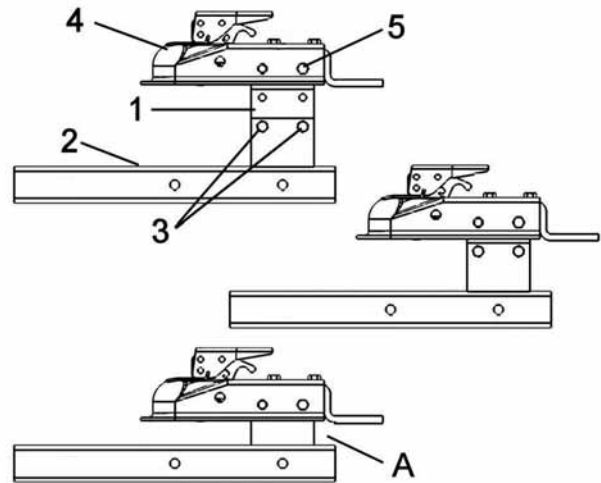
Assemble the hitch support

Choose between the three positions (see figure), the height of the hitch support.

There must be a maximum of ground clearance according to your vehicle.

Assemble the hitch support (items 1 & 2) with four 3/8" x 3/4" hex. bolts (item 3) and flange nuts (two on each side) if applicable (Figure A does not have the hitch supports (item 1)).

Install the hitch (item 4) with a 3/8" x 3" hex bolt (item 5) and nylon insert lock nut.



Assemble the hitch support

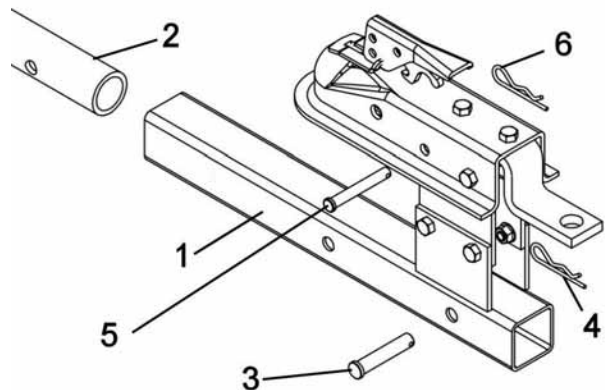
Insert the assembled hitch support (item 1) onto the subframe extension (item 2). Secure in place with the pin (item 3) and the 3mm hair pin (item 4).

**NOTE:** The hitch support has three sets of holes to increase the length of the subframe if necessary.

Attach the hitch assembly on the tow hitch ball of the vehicle. Insert the pin (item 5) and secure with a 3 mm hair pin (item 6). Make sure the subframe does not come into contact with vehicle at any time.

Turn the wheels on the support towards the front to prevent the wheel support from lifting by the force exercised by the springs.

**NOTE:** You can turn the hitch assembly (item 1) by removing the pin (item 3) to facilitate driving the vehicle over the subframe.

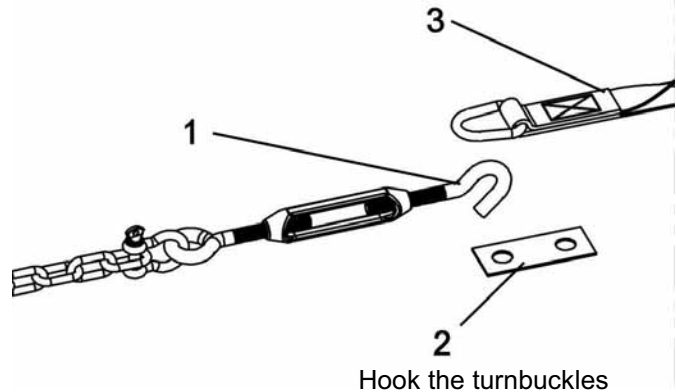


Secure the hitch support on the tow hitch ball

## ASSEMBLY

Hook the turnbuckles (item 1) into the brackets (item 2) or into the lift straps (item 3) and adjust them so that the subframe is centered under the vehicle. Tighten the turnbuckles firmly in order to tauten the vehicle's suspension.

**IMPORTANT:** After adjusting the turnbuckles, tighten the nuts on the vehicle's wheel supports firmly. Make sure to lock the nuts with the original locks.



### INSTALLING THE WINCH HOOK

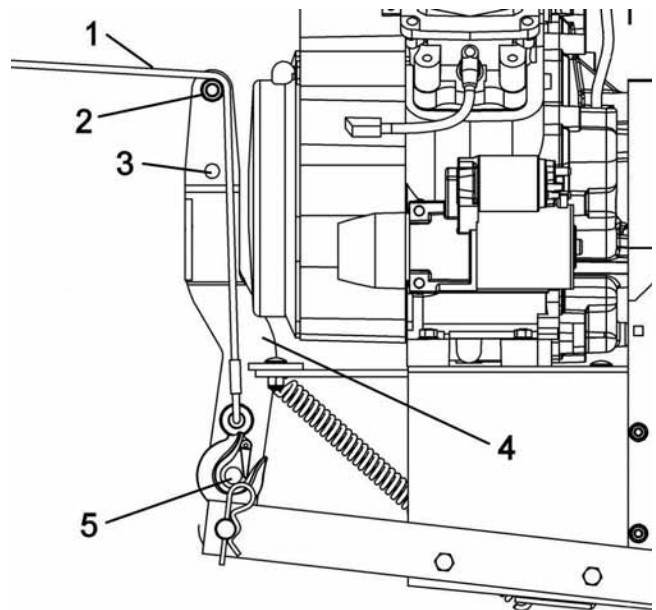
Install the winch cable (item 1).

**NOTE:**

If the vehicle's winch is **higher than 20" from the ground**, install the sleeve (item 2) in the top hole with a hex. bolt 1/2" x 2 1/4" and a nylon insert lock nut. Tighten firmly.

If the vehicle's winch is **lower than 20" from the ground**, install the sleeve (item 2) in the bottom hole (item 3) with a hex. bolt 1/2" x 2 1/4" and a nylon insert lock nut. Tighten firmly.

Install the winch's hook on the lever rod (item 5) by threading it behind the lever (item 4) as shown and thread the cable over the sleeve as shown.

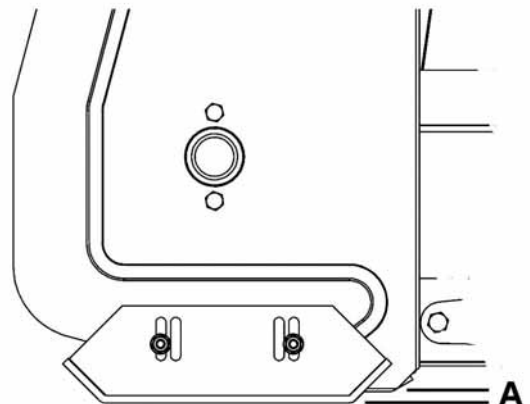


Install the winch hook

### VERIFY SKID SHOE ADJUSTMENT:

**LEVEL PAVED SURFACE:** Adjust skid shoes to allow 3/16" to 1/4" clearance (A) between cutting edge and surface.

**UNEVEN OR GRAVEL SURFACE:** Adjust skid shoes to allow 1/2" to 5/8" clearance (A) between cutting edge and surface.



Adjust skid shoes

# ASSEMBLY

## STEP 3

### ENGINE PREPARATION:



## CAUTION



Oil must be added to this motor.

Please refer to motor's owner's manual for instructions and proper winter oil recommendations.

### Connecting the wire assembly:

The kit is equipped with a connector which will permit you to remove the snowblower quickly without having to remove the wiring.

Place and tie the wires in an appropriate place under the A.T.V. since they will stay there permanently.

Connect the red wire (positive) to the ATV battery.  
Connect the black wire (negative) on a bolt that is on the A.T.V. frame (scrape away any paint to make sure the contact is good) and retighten the bolt.

Fill the gas tank with unleaded gasoline.  
Wipe off any spilled gasoline.

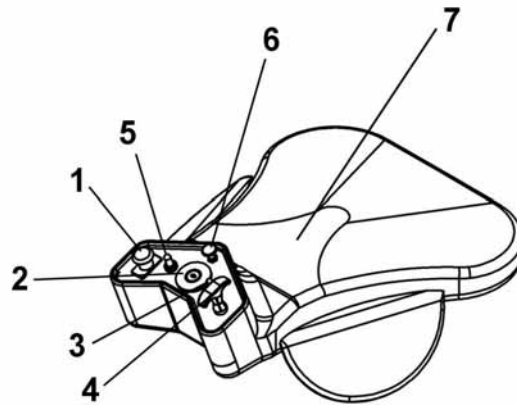


Wire assembly

### SADDLE PREPARATION:

**NOTE:** All the electrical system is already installed and connected to the various snowblower components.

Place the saddle assembly on the A.T.V. seat.  
Place and tie the wire protector in an appropriate place so the wire protector does not interfere with any hot or moving parts



Saddle controls

- Item 1: P.T.O. Switch
- Item 2: Ignition Switch
- Item 3: Switch (chute)
- Item 4: Throttle Control
- Item 5: Switch (chute)
- Item 6: Choke Control
- Item 7: Safety Switch

# OPERATION

## OPERATING THE SNOWBLOWER

You must be sitting on the saddle in order to start the snowblower engine.

- a) Make sure the snowblower is clear of snow before engaging the snowblower.
- b) Make sure that the auger and fan operate freely.
- c) Start the snowblower engine.
- d) Before engaging the snowblower drive, always have the engine running at medium R.P.M.
- e) Operate the snowblower at maximum engine R.P.M.

**IMPORTANT: USE FULL ENGINE R.P.M. WHEN REMOVING WET, STICKY SNOW. LOW R.P.M. POWER WILL TEND TO PLUG THE CHUTE.**

## ELECTRIC CONTROLS

See page 10 for identification of the saddle controls.

### RAISING AND LOWERING THE SNOWBLOWER:

Use the winch switch control to raise and lower the snowblower.

**IMPORTANT:** To prolong the subframe's life, release the switch immediately when the attachment hits the stopper in the highest position.

### TURNING THE CHUTE AND DEFLECTOR:

Use the switches on the saddle to turn the chute and to raise or lower the deflector.

### ENGAGING AND DISENGAGING THE SNOWBLOWER:

Engage the snowblower when the engine is running at medium R.P.M. by pulling the P.T.O. switch.

## REMOVING SNOW

When removing snow, do not use the snowblower as a dozer blade to push snow. Allow snowblower to ingest snow at its own speed. If the speed of your A.T.V. is too fast, the snowblower may become overloaded and plug. For best results, raise the snowblower and remove a top layer of snow. A second pass with the snowblower will remove the remaining snow.



## WARNING



Read the A.T.V.'s owner's manual carefully. Be thoroughly familiar with the controls & proper use of the attachment. Know how to stop the unit & disengage the controls quickly.



## WARNING



- Do not attempt to clear plugged chute, auger or fan of snow while the snowblower's engine is running.
- Disengage snowblower.
- Lower snowblower onto ground.
- Set the parking brake.
- Stop engine, remove the ignition key, disconnect the wire from spark plug(s) and keep away from spark plug(s) to prevent accidental starting.
- Make sure all moving parts have stopped.
- Do not use hand to unplug chute.
- Use a 36" (924 mm.) minimum length stick or board.



## WARNING



**TO PREVENT INJURIES AND FOR MORE TRACTION WHEN USING SNOWBLOWER:**

- Do not drive faster than 3 km/hr (2 m/hr) with snowblower on the ground.
- Do not drive faster than 10 km/hr (6 m/hr) with the snowblower in raised position.
- Do not operate on a slope greater than 10°.
- A.T.V. manufacturer approved tire chains are required.

# MAINTENANCE



## WARNING



### TO PREVENT INJURIES:

Stop the snowblower motor.  
Apply parking brake.  
Remove the ignition key.  
Disconnect the wire from the spark plug(s) and keep away from spark plug(s) to prevent accidental starting.

## MAINTENANCE

- Check mounting bolts at frequent intervals for proper tightness in order to prevent costly repairs. Make sure your snowblower is in safe working condition.
- Provide adequate blocking before working under the snowblower when in raised position.

## ADJUSTMENTS

### SKID SHOE ADJUSTMENT:

Level Paved Surface: Adjust skid shoes to allow 3/16" to 1/4" clearance between cutting edge and surface.

Uneven or Gravel Surface: Adjust skid shoes to allow 1/2" to 5/8" clearance between cutting edge and surface.

## LUBRICATION

Grease the wheel axles, the fork pivots after every sixteen hours of use.

Apply oil at all pivot points.

Chute Rotation System: Oil chute base, rotation worm every sixteen hours of operation.

## CUTTING EDGE MAINTENANCE

Verify from time to time the wearing on the cutting edge to make sure you do not wear out the base of the snowblower's chassis. This cutting edge is reversible. Unscrew the bolts and turn the cutting edge. Tighten the bolts securely.

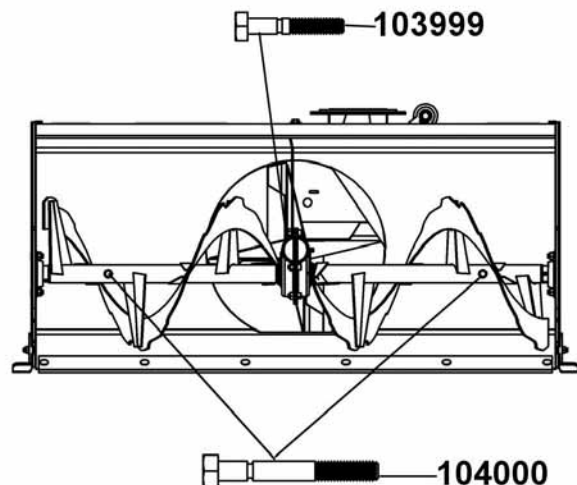
## AUGER AND FAN SHEAR BOLT REPLACEMENT

\*Shear bolts are to be considered a preventive measure and not an assured protection. Operator vigilance is required. Thoroughly inspect the areas where the snowblower is to be used and remove all foreign objects.

To avoid damage to the snowblower:

Use only the original shear bolts (grooved bolts).  
#104000 in bags of 10 for both sections of auger.  
#103999 in bags of 10 for the fan.

The use of any other shear bolt will not insure any protection and may void the warranty.



## DISMOUNTING THE SNOWBLOWER:

- Unplug connector that unites the A.T.V. to the motor.
- Remove the winch hook & cable from the snowblower.
- Remove the lock pins from the rear of the subframe. Lower the subframe to the ground. Reinstall the lock pins in the holes.
- Carefully back up the A.T.V. from over the subframe.

## STORAGE

- Clean snowblower and subframe thoroughly and repaint all parts from which paint has worn.
- List the replacement parts that will be needed before the next season.
- Follow the instructions in the lubrication section
- Store the snowblower and the subframe in a dry place.
- Concerning the snowblower engine, follow the instructions in the engine owner's manual.

# BELT REPLACEMENT

## **BELT REPLACEMENT:**

For belt part numbers, refer to snowblower parts breakdown section for parts identification  
**Snowblower must be detached & disconnected from the A.T.V. to replace belts.**

### **V-Belt:**

- a) Remove the belt guard (item 1)
- b) Remove the 7/16 x 5 1/2" hex bolt (item 2) from the clutch support.
- c) Disconnect the wire from electric clutch.
- d) Remove the gas tank from the support. (Put on the ground to avoid any spills).
- e) Turn the snowblower face down (engine on top).
- f) Remove the six nuts (item 3) and bolts from the reduction plate (item 4).
- g) Remove the reduction plate.
- h) Unhook the spring (item 5) from the slot on the tension arm (item 6) and remove the tension arm.
- i) Replace the belt.
- j) Re-install parts by repeating steps backwards.
- k) Make sure the spring is well installed in the slot on the tension arm.
- l) Make sure the pin on the reduction plate is inserted in the tube on the tension arm.

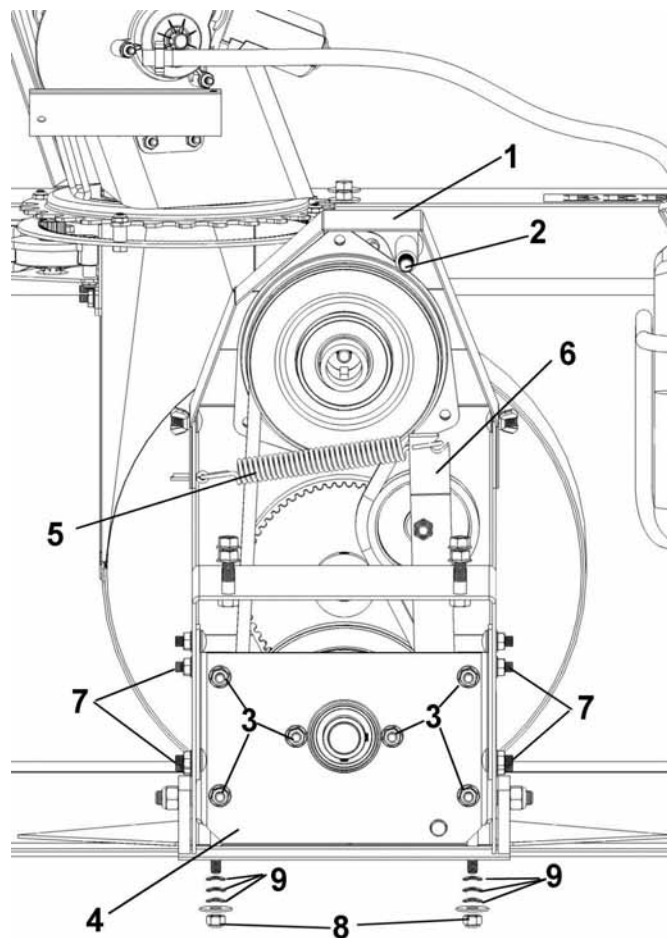
### **Timing Belt:**

- a) Remove the gas tank from the support. (Put on the ground to avoid any spills).
- b) Turn the snowblower face down (engine on top).
- c) Loosen the two nuts (item 7) on each side and the two nuts (item 8) needed to apply tension to the belt.
- d) Remove the six nuts (item 3) and bolts from the reduction plate (item 4)
- e) Remove the reduction plate
- f) Unhook the spring (item 5) from the slot on the tension arm (item 6) and remove the tension arm.
- g) Remove the V-belt.
- h) Replace the timing belt.

### **IMPORTANT:**

**Make sure the notches of the belt are well inserted into the those of the pulley**

- i) Re-install parts by repeating steps backwards.
- j) Make sure to replace and realign the V-belt on the V-pulley.
- k) Make sure the spring is well installed in the slot on the tension arm.
- l) Make sure the pin on the reduction plate is inserted in the tube on the tension arm.
- m) Follow instructions in timing belt adjustment section





## BELT ADJUSTMENTS



### CAUTION



Never use the snowblower without the belt guard.

### TIMING BELT ADJUSTMENT: (see following page for a good or improper pulley adjustment )

To obtain the right tension on the timing belt,

- Make sure that the four nuts (item 7) are loosened.
- Tighten the two nuts (item 8) needed to apply tension to the belt) until the three spring washers (item 9) are completely compressed.
- Retighten the four nuts.

**NOTE: To help avoid the belt from breaking, it is preferable to put less tension on the belt than too much tension.**

Before re-installing snowblower to ATV,

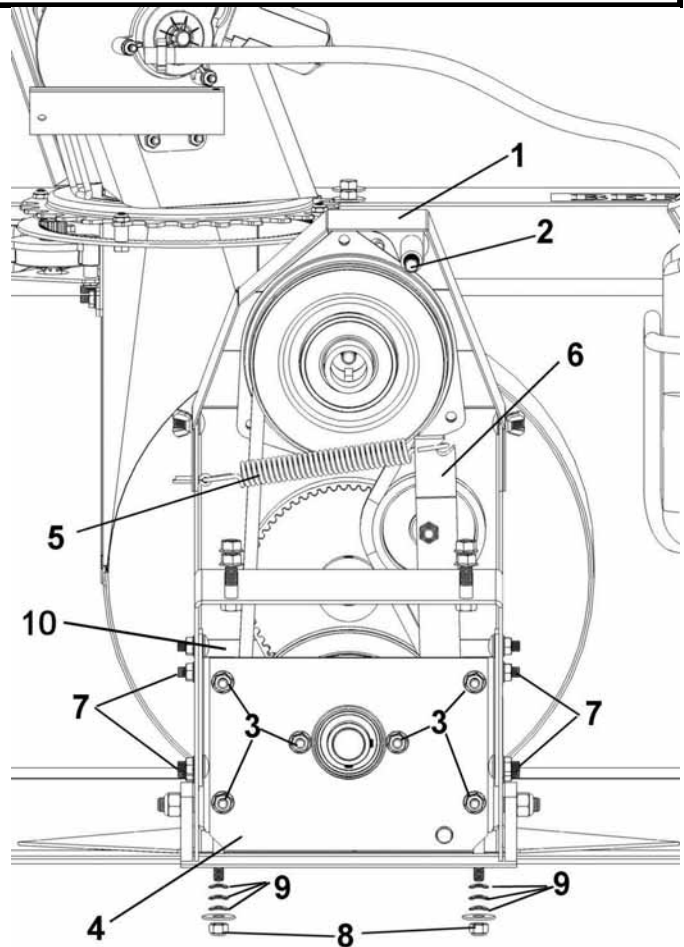
- Turn the auger by hand a few turns and verify that the timing belt does not run off to the side of the sprocket.

If the belt does move,

- Loosen the nuts (item 7) and re-align the pulleys by adjusting the angle of the reduction box (item 10) as shown on following page.
- Retighten the four nuts.

**IMPORTANT:** After installing the on the ATV, let snowblower run for a minute, turn everything off and re-inspect the belt.

If necessary, re-align the pulleys by adjusting the angle of the reduction box.



## BELT ADJUSTMENTS



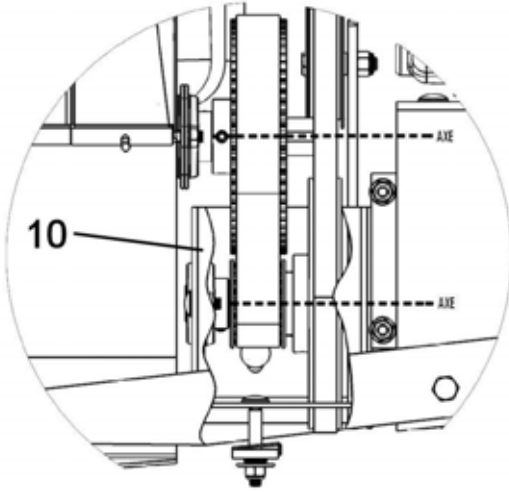
### CAUTION



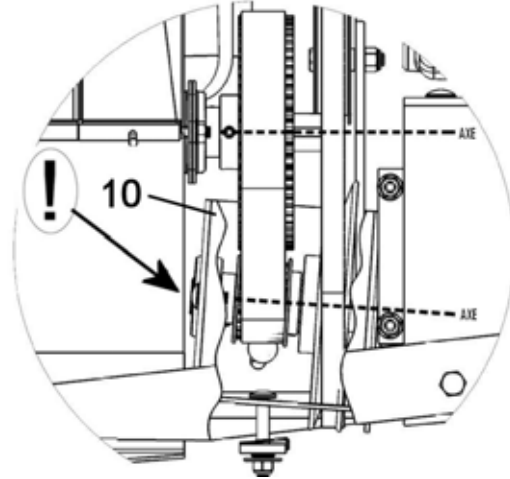
Never use the snowblower without the belt guard.

### IMPORTANT:

The following figures (side views) show a good or improper adjustment of the pulleys in the reduction box (item 10).



**Good adjustment:** The pulleys are well aligned and the timing belt stays completely engaged on the sprocket.



**Improper adjustment:** The pulleys are not well aligned and the timing belt does not stay completely engaged on the sprocket, you have to realign the pulleys by adjusting the angle of the reduction box.

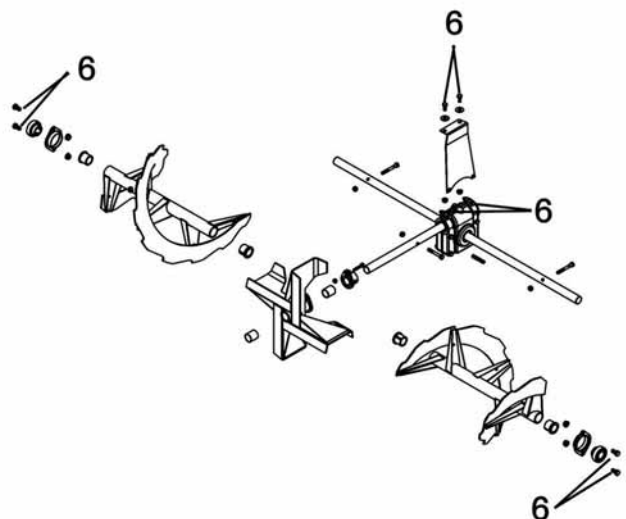
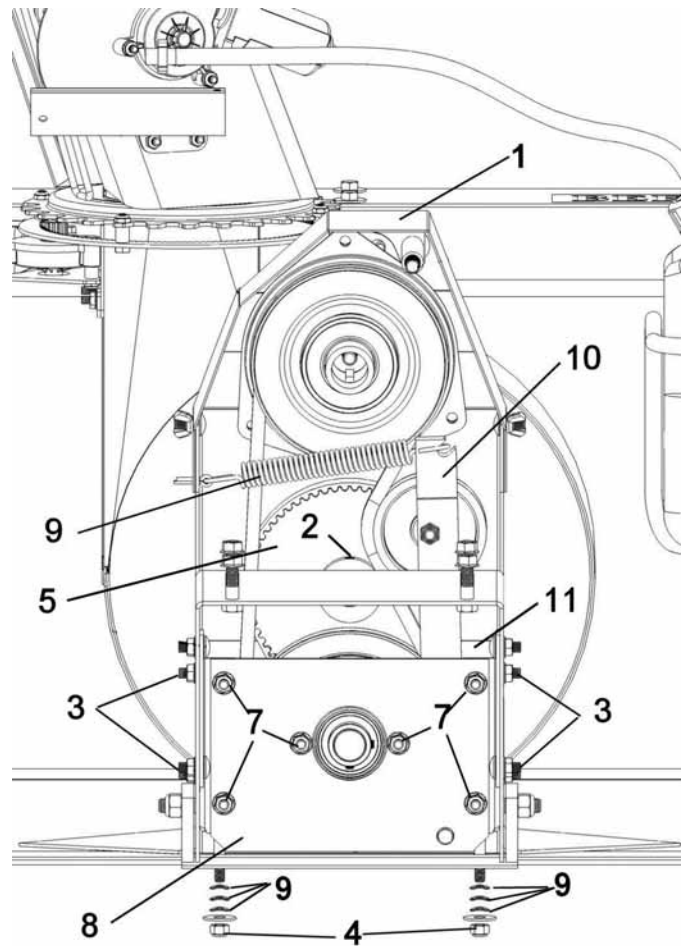
## REPLACEMENT OF ONE OR TWO SECTIONS OF THE AUGER AND / OR GEAR BOX

For belt part numbers, refer to snowblower parts breakdown section for parts identification

**Snowblower must be detached & disconnected from the A.T.V. to replace the auger or the gear box.**

- a) Remove the gas tank from the support (place on the ground to avoid any spills)
- b) Remove the belt guard (item 1).
- c) Turn the snowblower face down (engine on top).
- d) Remove the six nuts (item 7) and bolts from the reduction plate (item 8).
- e) Remove the reduction plate.
- f) Unhook the spring (item 9) from the slot on the tension arm (item 10) and remove the tension arm.
- g) Remove the two belts from the reduction box. The v pulley will stay in place on the electric clutch.
- h) Loosen the four nuts on each side (item 3) and the two nuts (item 4) necessary to remove tension on the belts.
- i) Remove the reduction box (item 11).
- j) Loosen the set screws (item 2) on the bearing and the pulley behind the snowblower.
- k) Remove the timing belt sprocket (item 5) from the gear box shaft.
- l) Remove all the bolts (item 6) and the nuts that support the gear box and its support.
- m) Remove the assembly (gear box, its support, the fan and augers) from the snowblower and save the nylon bushings and bearings.
- n) Replace the appropriate parts. Insert the shaft and the key into the new gear box (if required).
- o) Install the new auger or augers on their respective side with the same nylon bushings on the shaft of the new gear box as shown.
- p) Re-install parts by repeating steps backwards.
- q) Make sure to well reposition the timing belt sprocket and the belt behind the snowblower.

**IMPORTANT:** You must clean the parts and apply some "Lock-Tite" 2760 on the key and the set screw. Tighten firmly.



# TROUBLESHOOTING

PROBLEM	POSSIBLE CAUSES	CORRECTIVE ACTION
Snowblower vibrates or is abnormally noisy.	Damaged pulley.	Replace pulley.
	Damaged bearing.	Replace bearing.
	Damaged fan.	Dismount & repair or replace fan.
	One or both sections of the auger is bent.	Replace one or both sections of auger.
One or both sections of the auger have stopped turning.	Shear bolt is probably broken.	Replace shear bolt (for identification, see Parts List "Snowblower"). Also see "Maintenance" section.
Snowblower stopped turning.	The belts are damaged or snapped.	Check & replace damaged belts (see instructions in section: Belt replacement & adjustments.
Belt is worn at a specific point.	Snowblower was engaged when already plugged.	Make sure auger & fan are not plugged or frozen before engaging snowblower.
Chute rotation is difficult.	Dirt or ice may be underneath chute.	Clean the base of chute & the rotation ring. Lubricate chute inside & out and the rotation worm.
	The base of the chute may be damaged or bent.	Replace defective parts.
The chute plugs easily.	Snowblower engine is turning too slowly.	Always have engine at full R.P.M. when using the snowblower.
	Advancing too quickly with A.T.V.	Reduce speed. Allow snowblower to ingest snow at its own speed.
Snowblower digs into ground.	Ground is not frozen or too soft.	Adjust skid shoes lower so they may better support the snowblower.
Snowblower does not raise evenly.	Uneven tire pressure from one side to another.	Verify and adjust snowblower tire pressure: 50 p.s.i.
Electric motor does not work.	Overheating of the motor.	These motors are equipped with an internal protector. Wait 10 minutes before using.

# TORQUE SPECIFICATION TABLE

## GENERAL TORQUE SPECIFICATION TABLE USE THE FOLLOWING TORQUES WHEN SPECIAL TORQUES ARE NOT GIVEN

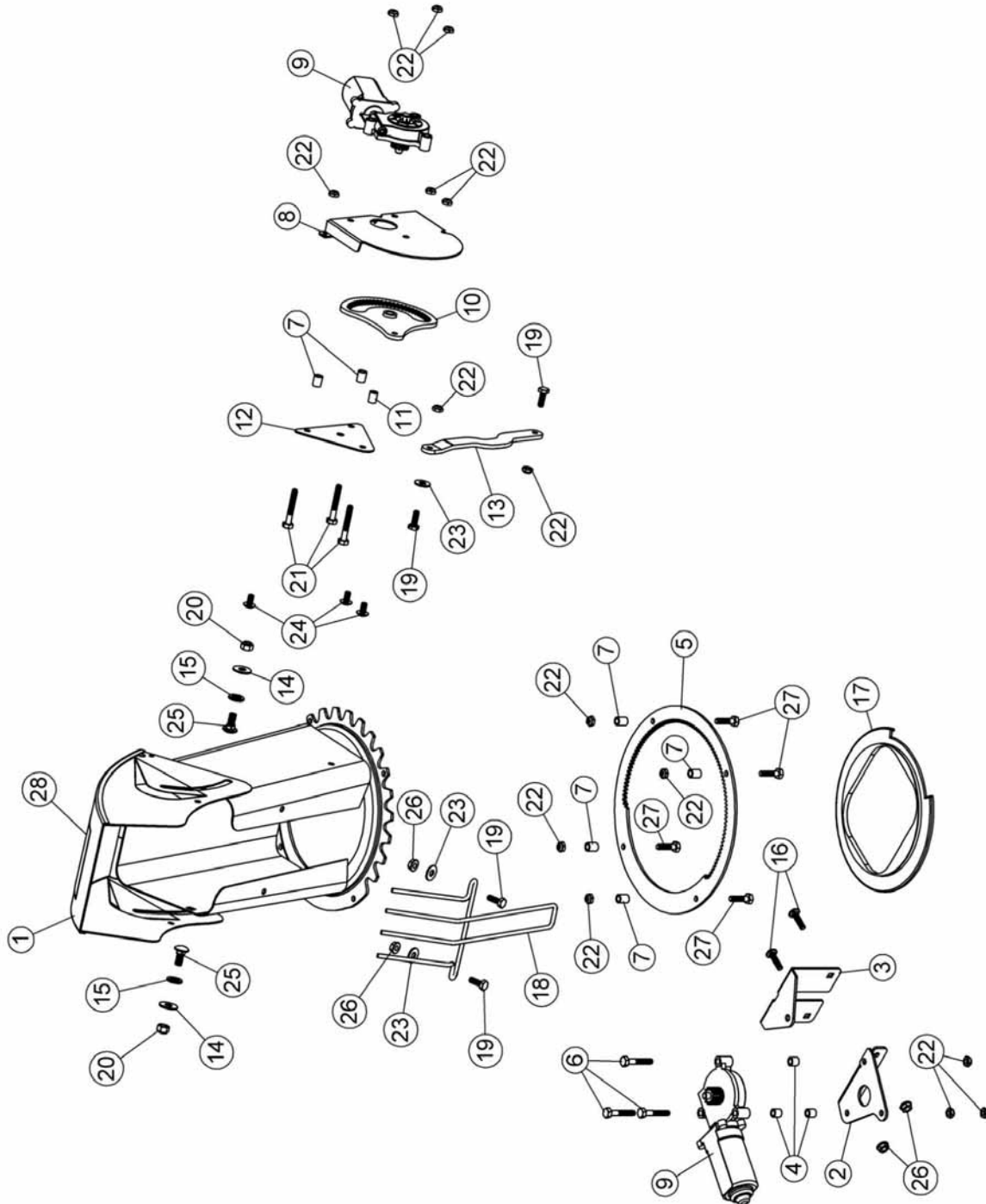
NOTE: These values apply to fasteners as received from supplier, dry or when lubricated with normal oil. They do not apply if special graphited or moly disulphide greases or other extreme pressure lubricants are used. This applies to both UNF and UNC threads.

SEE Grade No.		2				5				8 *			
BOLT HEAD IDENTIFICATION MARKS AS PER GRADE NOTE MANUFACTURING MARKS WILL VARY		TORQUE				TORQUE				TORQUE			
BOLT SIZE		POUNDS FEET		NEWTON-METERS		POUNDS FEET		NEWTON-METERS		POUNDS FEET		NEWTON-METERS	
Inches	Millimetre	Min.	Max.	Min.	Max.	Min.	Max.	Min.	Max.	Min.	Max.	Min.	Max.
1/4"	6.35	5	6	6.8	8.13	9	11	12.2	14.9	12	15	16.3	30.3
5/16"	7.94	10	12	13.6	16.3	17	20.5	23.1	27.8	24	29	32.5	39.3
3/8"	9.53	20	23	27.1	31.2	35	42	47.5	57	45	54	61	73.2
7/16"	11.11	30	35	40.7	47.4	54	64	73.2	86.8	70	84	94.9	113.9
1/2"	12.7	45	52	61	70.5	80	96	108.5	130.2	110	132	149.2	179
9/16"	14.29	65	75	88.1	101.6	110	132	149.2	179	160	192	217	260.4
5/8"	15.88	95	105	128.7	142.3	150	180	203.4	244.1	220	264	298.3	358
3/4"	19.05	150	185	203.3	250.7	270	324	366.1	439.3	380	456	515.3	618.3
7/8"	22.23	160	200	216.8	271	400	480	542.4	650.9	600	720	813.6	976.3
1"	25.4	250	300	338.8	406.5	580	696	786.5	943.8	900	1080	1220.4	1464.5

\*Thick nuts must be used with grade 8 bolts

METRIC BOLT TORQUE SPECIFICATIONS							
Size Screw	Grade No.	COARSE THREAD			FINE THREAD		
		Pitch (mm)	Pounds Feet	Newton-Meters	Pitch (mm)	Pounds Feet	Newton-Meters
M6	4T	1.00	3.6 - 5.8	4.9 - 7.9	-	-	-
	7T		5.8 - 9.4	7.9 - 12.7		-	-
	8T		7.2 - 10	9.8 - 13.6		-	-
M8	4T	1.25	7.2 - 14	9.8 - 19	1.00	12 - 17	16.3 - 23
	7T		17 - 22	23 - 29.8		19 - 27	25.7 - 36.6
	8T		20 - 26	27.1 - 35.2		22 - 31	29.8 - 42
M10	4T	1.50	20 - 25	27.1 - 33.9	1.25	20 - 29	27.1 - 39.3
	7T		34 - 40	46.1 - 54.2		35 - 47	47.4 - 63.7
	8T		38 - 46	51.5 - 62.3		40 - 52	54.2 - 70.5
M12	4T	1.75	28 - 34	37.9 - 46.1	1.25	31 - 41	42 - 55.6
	7T		51 - 59	69.1 - 79.9		56 - 68	75.9 - 92.1
	8T		57 - 66	77.2 - 89.4		62 - 75	84 - 101.6
M14	4T	2.00	49 - 56	66.4 - 75.9	1.50	52 - 64	70.5 - 86.7
	7T		81 - 93	109.8 - 126		90 - 106	122 - 143.6
	8T		96 - 109	130.1 - 147.7		107 - 124	145 - 168
M16	4T	2.00	67 - 77	90.8 - 104.3	1.50	69 - 83	93.5 - 112.5
	7T		116 - 130	157.2 - 176.2		120 - 138	162.6 - 187
	8T		129 - 145	174.8 - 196.5		140 - 158	189.7 - 214.1
M18	4T	2.00	88 - 100	119.2 - 136	1.50	100 - 117	136 - 158.5
	7T		150 - 168	203.3 - 227.6		177 - 199	239.8 - 269.6
	8T		175 - 194	237.1 - 262.9		202 - 231	273.7 - 313
M20	4T	2.50	108 - 130	146.3 - 176.2	1.50	132 - 150	178.9 - 203.3
	7T		186 - 205	252 - 277.8		206 - 242	279.1 - 327.9
	8T		213 - 249	288.6 - 337.4		246 - 289	333.3 - 391.6

**PARTS BREAKDOWN / NOMENCLATURE DES PIÈCES  
 ROTATION SYSTEM WITH CHUTE  
 SYSTÈME DE ROTATION AVEC GOULOTTE**

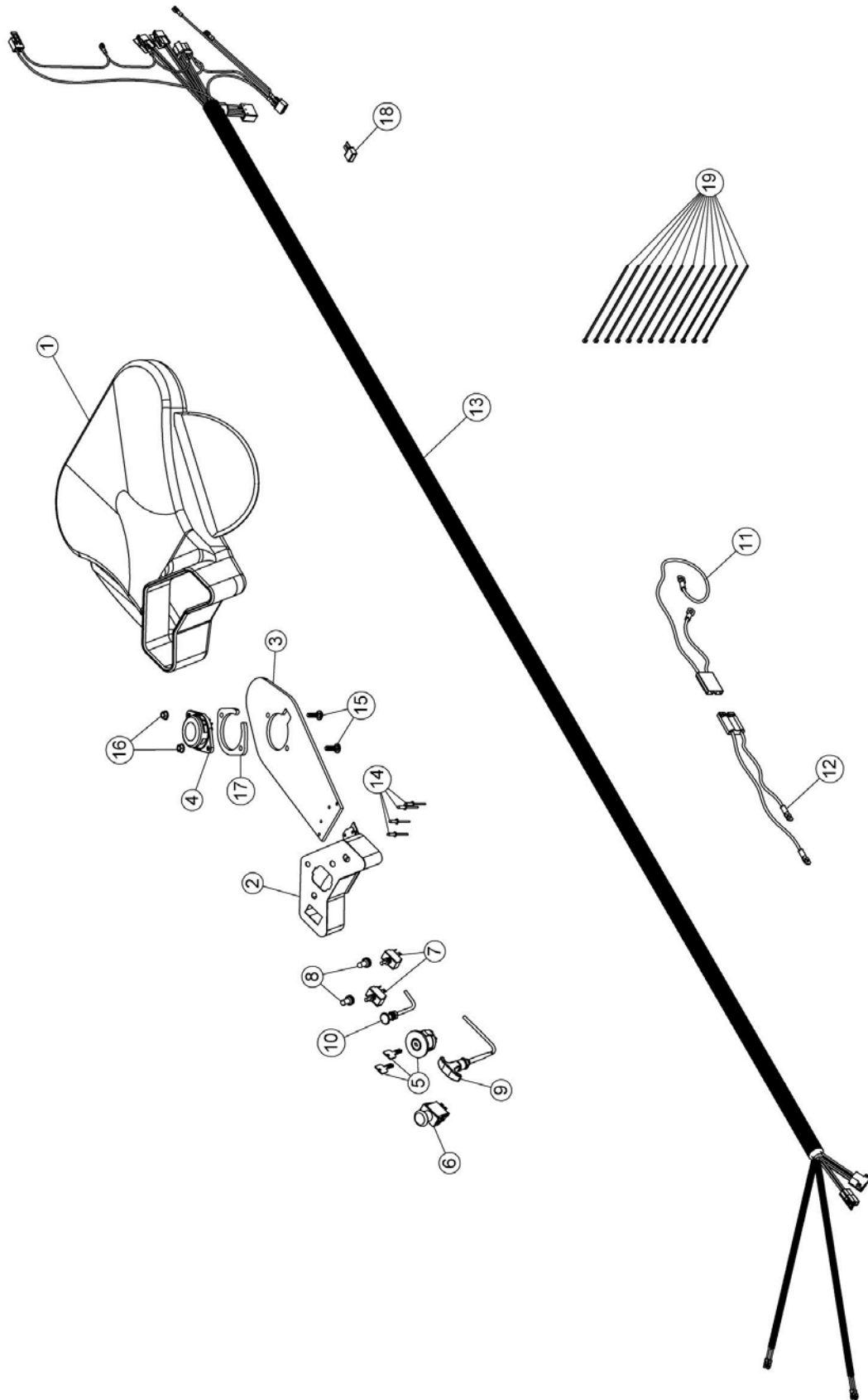


## PARTS LIST / LISTE DES PIÈCES

Ref. Réf.	English description	Description française	Qty. Qté.	Part # Pièce #
1	Chute	Goulotte	1	103936
2	Bracket	Support	1	103971
3	Reinforcement plate	Plaque de renforcement	1	103972
4	Spacer	Espaceur	3	103368
5	Rotation ring	Anneau de rotation	1	103974
6	Hex. bolt 1/4" n.c. x 1 1/2"	Boulon hex. 1/4" n.c. x 1 1/2"	3	O/L
7	Spacer	Espaceur	6	103361
8	Bracket	Support	1	103375
9	Electric motor	Moteur électrique	2	103378
10	Lever	Levier	1	103365
11	Oil lite bushing	Coussinet imprégné d'huile	1	103362
12	Plate	Plaque	1	103363
13	Arm	Bras	1	103364
14	Nylon flat washer 11/32"	Rondelle plate de nylon 11/32"	2	102009
15	Nylon flat washer 7/16"	Rondelle plate de nylon 7/16"	2	102011
16	Carriage bolt 1/4" n.c. x 1"	Boulon à carrosserie 1/4" n.c. x 1"	2	O/L
17	Rotation ring	Anneau de rotation	1	103943
18	Hand guard	Fourche protectrice	1	102012
19	Hex. bolt 1/4" n.c. x 3/4"	Boulon hex. 1/4" n.c. x 3/4"	4	O/L
20	Nylon insert lock nut 5/16" n.c.	Écrou à garniture de nylon 5/16" n.c.	2	O/L
21	Hex. bolt 1/4" n.c. x 1 3/4"	Boulon hex. 1/4" n.c. x 1 3/4"	3	O/L
22	Nylon insert lock nut 1/4" n.c. (thin)	Écrou à garniture de nylon 1/4" n.c.(mince)	15	O/L
23	Flat washer 5/16" hole	Rondelle plate 5/16" trou	3	O/L
24	Machine screw T.H. 1/4" n.c. x 1/2"	Vis mécanique T.H. 1/4" n.c. x 1/2"	3	O/L
25	Carriage bolt 5/16" n.c. x 3/4"	Boulon à carrosserie 5/16" n.c. x 3/4"	2	O/L
26	Flange nut 1/4" n.c.	Écrou à bride 1/4" n.c.	4	O/L
27	Hex. bolt 1/4" n.c. x 1"	Boulon hex. 1/4" n.c. x 1"	4	O/L
28	Danger decal	Décalque danger	1	102127

O/L= Obtain locally / Obtenir localement

# PARTS BREAKDOWN / NOMENCLATURE DES PIÈCES SADDLE ASSEMBLY / SELLE ASSEMBLÉE



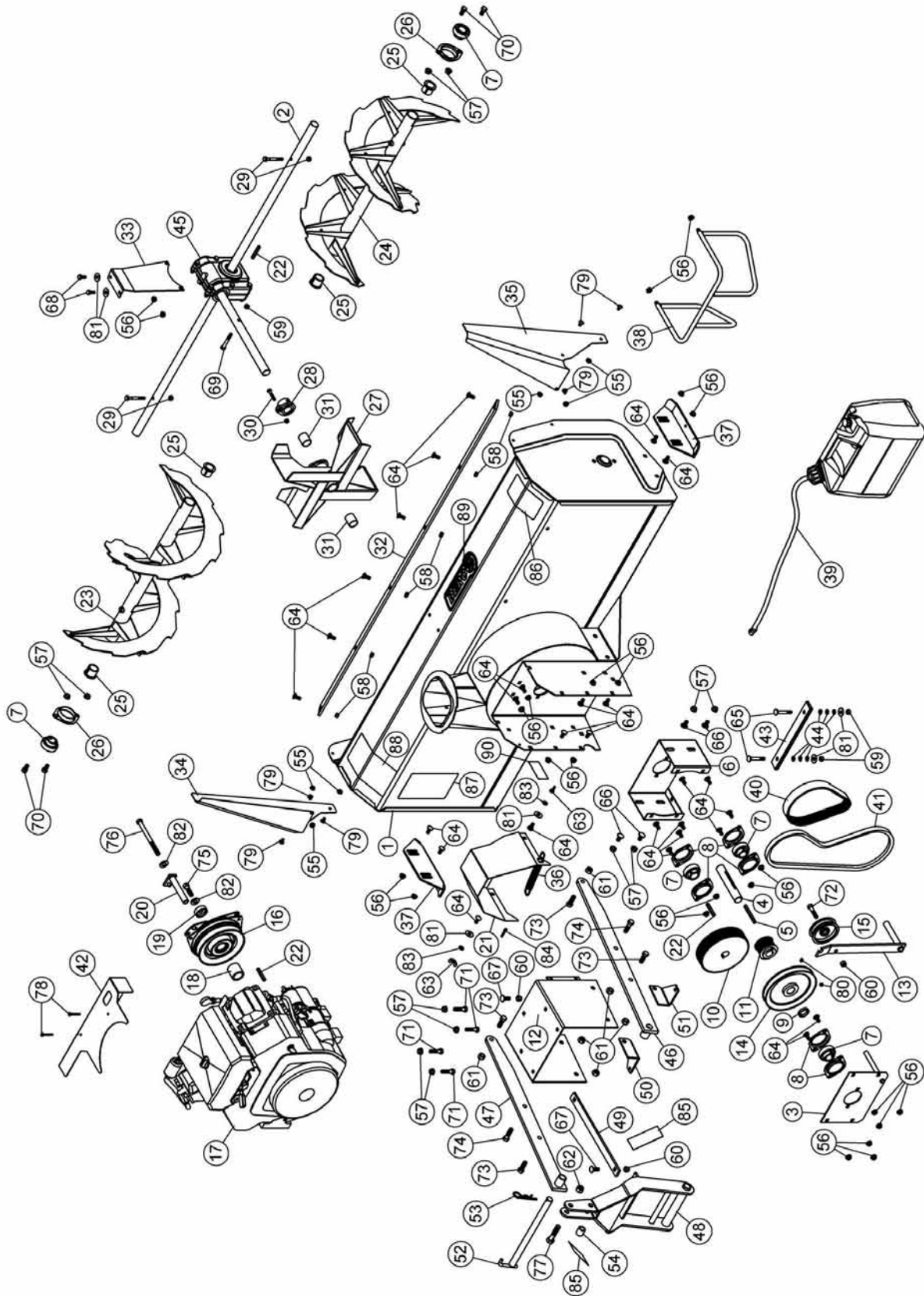


## PARTS LIST / LISTE DES PIÈCES

Ref. Réf.	English description	Description française	Qty. Qté.	Part # Pièce #
1	Seat cover	Couvre-siège	1	103987
2	Control board	Tableau de contrôle	1	104011
3	Switch support	Support de commutateur	1	104012
4	Safety switch ass'y	Commutateur de sécurité ass'é	1	104014
5	Ignition switch	Commutateur d'ignition	1	104015
6	P.T.O. switch	Commutateur de p.d.f.	1	104016
7	Switch	Commutateur	2	103381
8	Rubber boot	Capuchon de caoutchouc	2	103379
9	Throttle control	Contrôle de l' accélérateur	1	104008
10	Choke control	Contrôle de l'étrangleur	1	104009
11	Wire assembly	Fil assemblé	1	104017
12	Wire assembly	Fil assemblé	1	104018
13	Wire assembly (Incl. 103382)	Fils assemblés (Incl. 103382)	1	104295
14	Pop-rivet 3/16" no AD-66BS	Rivet pop 3/16 no.AD-66BS	4	O/L
15	Carriage bolt 5/16" n.c. x 1"	Boulon à carrosserie 5/16" n.c. x 1"	2	O/L
16	Flange nut 5/16" n.c.	Écrou à bride 5/16" n.c.	2	O/L
17	Shim	Cale	1	104013
18	Breaker	Disjoncteur	1	103382
19	Tie wrap 8"	Attache de nylon 8"	12	O/L

O/L= Obtain locally / Obtenir localement

# PARTS BREAKDOWN / NOMENCLATURE DES PIÈCES SNOWBLOWER / SOUFFLEUSE



## PARTS LIST / LISTE DES PIÈCES

Ref. Réf.	English description	Description française	Qty. Qté.	Part # Pièce #
1	Frame 54"	Châssis 54"	1	104896
2	Shaft 54"	Arbre 54"	1	104722
3	Reduction plate	Plaque de réduction	1	103959
4	Shaft	Arbre	1	103961
5	Key 1/4" x 1/4" x 2 31/32	Clé 1/4" x 1/4" x 2 31/32	1	103962
6	Reduction box	Boîte de réduction	1	103960
7	Bearing with set screw	Roulement à billes avec vis à pression	5	102755
8	Flangette	Flangette	6	102213
9	Spacer	Douille d'espacement	1	103997
10	Sprocket with set screw	Pignon avec vis à pression	1	103743
11	Sprocket with set screw	Pignon avec vis à pression	1	103741
12	Engine support	Support de moteur	1	103970
13	Tension arm	Bras de tension	1	103985
14	V pulley	Poulie en V	1	103739
15	Flat pulley	Poulie plate	1	102839
16	Electric clutch	Embrayage électrique	1	103998
17	Engine CH-23 (Kohler)	Moteur CH-23 (Kohler)	1	104003
18	Clutch spacer	Espaceur d'embrayage	1	103975
19	Flange washer	Rondelle à bride	1	103976
20	Clutch support	Support d'embrayage	1	103980
21	Belt guard	Garde-courroie	1	103979
22	Key 1/4" x 1/4" x 2"	Clé 1/4" x 1/4" x 2"	3	102922
23	Auger 54" left	Vis 54" gauche	1	104747
24	Auger 54" right	Vis 54" droite	1	104748
25	Rotation bushing	Coussinet de rotation	4	103946
26	Flangette	Flangette	2	102680
27	Fan	Éventail	1	103932
28	Shear plate	Plaque de cisaillement	1	103933
29	Shear bolt / N.I.L.N. (auger) pkg-10	Boulon de séc. / É.G.N. (vis) pqt-10	2	104000
30	Shear bolt / N.I.L.N. (fan) pkg-10	Boulon de séc./ É.G.N. (éven.) pqt-10	1	103999

O/L= Obtain locally / Obtenir localement

## PARTS LIST / LISTE DES PIÈCES

Ref. Réf.	English description	Description française	Qty. Qté.	Part # Pièce #
31	Oil lite bushing	Coussinet imprégné d'huile	2	102784
32	Cutting edge 54"	Racloir 54"	1	104427
33	Gear box support	Support de boîte d'engrenage	1	104746
34	Left drift cutter	Couteau à neige gauche	1	102821
35	Right drift cutter	Couteau à neige droit	1	102822
36	Spring	Ressort	1	102304
37	Skid shoe	Patin	2	103188
38	Tank support	Support de réservoir	1	103963
39	Gasoline tank assembly	Réservoir d'essence assemblé	1	104005
40	Timing belt 600-8MT-30	Courroie synchronisée 600-8MT-30	1	104004
41	V-Belt , A-40	Courroie en V , A-40	1	102999
42	Heat shield	Pare-chaleur	1	104621
43	Tension bar	Barre de tension	1	103995
44	Spring washer	Rondelle à ressort	6	104007
45	Gear box left rotation	Boîte d'engrenage rotation gauche	1	104718
46	Right hitch	Attache droite	1	104897
47	Left hitch	Attache gauche	1	104898
48	Lever	Levier	1	104899
49	Link	Lien	1	104900
50	Left spring link	Lien du ressort gauche	1	103977
51	Right spring link	Lien du ressort droit	1	103978
52	Pin	Goupille	1	104759
53	Hair pin 4mm	Goupille à ressort 4mm	1	102054
54	Sleeve	Douille	1	102480
55	Flange nut 1/4" n.c.	Écrou à bride 1/4" n.c.	6	O/L
56	Flange nut 5/16" n.c.	Écrou à bride 5/16" n.c.	24	O/L
57	Flange nut 3/8" n.c.	Écrou à bride 3/8" n.c.	12	O/L
58	Stover lock nut 5/16" n.c.	Écrou de blocage 5/16" n.c.	6	O/L
59	Nylon insert lock nut 5/16" n.c.	Écrou à garniture de nylon 5/16" n.c.	3	O/L
60	Nylon insert lock nut 3/8" n.c.	Écrou à garniture de nylon 3/8" n.c.	3	O/L

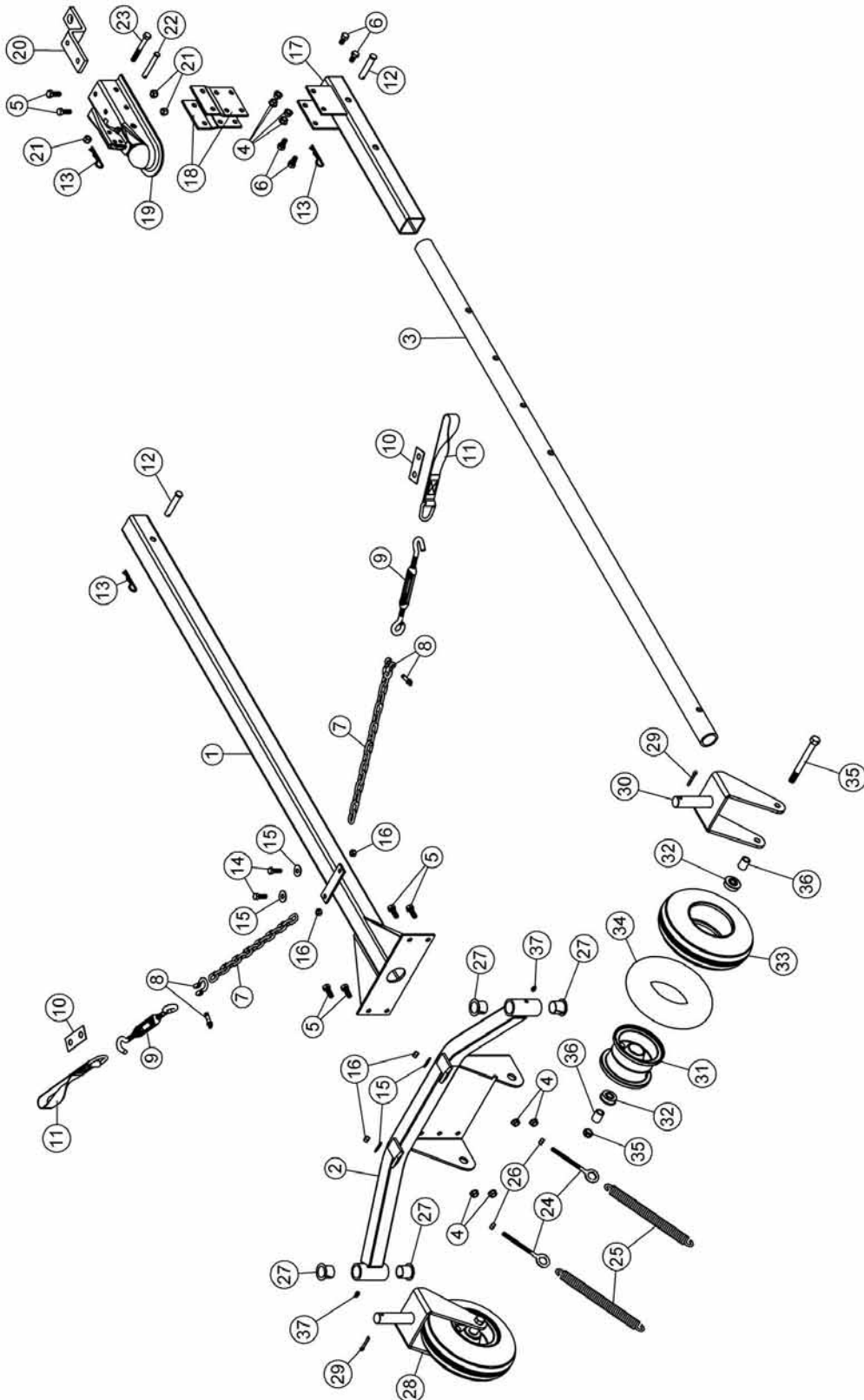
O/L= Obtain locally / Obtenir localement

## PARTS LIST / LISTE DES PIÈCES

Ref. Réf.	English description	Description française	Qty. Qté.	Part # Pièce #
61	Nylon insert lock nut 7/16" n.c.	Écrou à garniture de nylon 7/16" n.c.	6	O/L
62	Nylon Insert lock Nut 1/2" n.c.	Écrou à garniture de nylon 1/2" n.c.	1	O/L
63	Wing nut 5/16" n.c.	Écrou oreilles 5/16" n.c.	2	O/L
64	Carriage bolt 5/16" n.c. x 3/4"	Boulon à carrosserie 5/16" n.c. x 3/4"	28	O/L
65	Carriage bolt 5/16" n.c. x 2 1/4"	Boulon à carrosserie 5/16" n.c. x 2 1/4"	2	O/L
66	Carriage bolt 3/8" n.c. x 3/4"	Boulon à carrosserie 3/8" n.c. x 3/4"	4	O/L
67	Carriage bolt 3/8" n.c. x 1"	Boulon à carrosserie 3/8" n.c. x 1"	2	O/L
68	Hex. bolt 5/16" n.c. x 3/4"	Boulon hex. 5/16" n.c. x 3/4"	2	O/L
69	Hex. bolt 5/16" n.c. x 2 1/4" GR8	Boulon hex. 5/16" n.c. x 2 1/4" GR8	1	O/L
70	Hex. bolt 3/8" n.c. x 3/4"	Boulon hex. 3/8" n.c. x 3/4"	4	O/L
71	Hex. bolt 3/8" n.c. x 1 1/2"	Boulon hex. 3/8" n.c. x 1 1/2"	4	O/L
72	Hex. bolt 3/8" n.c. x 1 3/4"	Boulon hex. 3/8" n.c. x 1 3/4"	1	O/L
73	Hex. bolt 7/16" n.c. x 1 1/4"	Boulon hex. 7/16" n.c. x 1 1/4"	4	O/L
74	Hex. bolt 7/16" n.c. x 1 1/2"	Boulon hex. 7/16" n.c. x 1 1/2"	2	O/L
75	Hex. bolt 7/16" n.f. x 1 1/2"	Boulon hex. 7/16" n.f. x 1 1/2"	1	O/L
76	Hex. bolt 7/16" n.c. x 5 1/2"	Boulon hex. 7/16" n.c. x 5 1/2"	1	O/L
77	Hex. bolt 1/2" n.c. x 2 1/4"	Boulon hex. 1/2" n.c. x 2 1/4"	1	O/L
78	Machine screw P.H. #10 x 32 x 1 1/2"	Vis mécanique P.H. #10 x 32 x 1 1/2"	2	O/L
79	Machine screw T.H. 1/4" n.c. x 1/2"	Vis mécanique T.H. 1/4" n.c. x 1/2"	6	O/L
80	Hex. socket set screw 5/16" n.c. x 5/16"	Vis à pression hex. 5/16" n.c. x 5/16"	2	O/L
81	Flat washer 3/8" hole	Rondelle plate 3/8" trou	6	O/L
82	Flat washer 1/2" hole	Rondelle plate 1/2" trou	2	O/L
83	Lock washer 5/16"	Rondelle de blocage 5/16"	2	O/L
84	Cotter pin 3/16" x 1"	Goupille fendue 3/16" x 1"	1	O/L
85	Important decal	Décalque important	2	104907
86	Danger decal	Décalque danger	1	102126
87	Shear bolt decal	Décalque boulon de sécurité	1	103951
88	Warning decal	Décalque attention	1	102125
89	Berco decal	Décalque Berco	1	102471
90	Serial number	Numéro de série	1	REF

O/L= Obtain locally / Obtenir localement

# PARTS BREAKDOWN / NOMENCLATURE DES PIÈCES SUBFRAME / SOUS-CHÂSSIS



## PARTS LIST / LISTE DES PIÈCES

Ref. Réf.	English description	Description française	Qty. Qté.	Part # Pièce #
1	Subframe	Sous-châssis	1	104769
2	Wheel support	Support de roue	1	104906
3	Subframe extension	Extension du sous-châssis	1	104637
4	Flange nut 3/8" n.c.	Écrou à bride 3/8" n.c.	8	O/L
5	Hex. bolt 3/8" n.c. x 1"	Boulon hex. 3/8" n.c. x 1"	6	O/L
6	Hex. bolt 3/8" n.c. x 3/4"	Boulon hex. 3/8" n.c. x 3/4"	4	O/L
7	Chain	Chaîne	2	104633
8	Shackle Ptd Z	Clevis Pqé Z	2	102343
9	Turnbuckle	Tendeur	2	104634
10	Bracket	Fixation	2	104632
11	Lift strap	Sangle de relevage	2	103613
12	Pin	Goupille	2	102189
13	Hair pin 3mm	Goupille à ressort 3mm	3	102617
14	Hex. bolt 5/16" n.c. x 1"	Boulon hex. 5/16" n.c. x 1"	2	O/L
15	Flat washer 3/8" hole	Rondelle plate 3/8" trou	4	O/L
16	Nylon insert lock nut 5/16" n.c.	Écrou à garniture de nylon 5/16" n.c.	4	O/L
17	Hitch support	Support d'attache	1	104638
18	Hitch support	Support d'attache	2	104641
19	Hitch	Attache	1	104639
20	Hitch ball support	Support de boule d'attelage	1	104640
21	Nylon insert lock nut 3/8" n.c.	Écrou à garniture de nylon 3/8" n.c.	3	O/L
22	Pin	Goupille	1	104642
23	Hex. bolt 3/8" n.c. x 3"	Boulon hex. 3/8" n.c. x 3"	1	O/L
24	Eye bolt	Boulon à oeillet	2	102087
25	Spring	Ressort	2	103073

## PARTS LIST / LISTE DES PIÈCES

Ref. Réf.	English description	Description française	Qty. Qté.	Part # Pièce #
26	Hex. nut 5/16" n.c.	Écrou hex. 5/16" n.c.	2	O/L
27	Nylon bushing	Coussinet en nylon	4	103087
28	Caster wheel assembly	Roue pivotante assemblée	2	104487
29	Cotter pin 3/16" x 1-1/2"	Goupille fendue 3/16" x 1-1/2"	2	O/L
30	Wheel fork	Fourche de roue	1	103986
31	Rim & bearing	Jante & roulement	1	102687
32	Ball bearing	Roulement à billes	2	102688
33	Tire 280/250-4	Pneu 280/250-4	1	102674
34	Inner tube 250-4	Chambre à air 250-4	1	102675
35	Axle bolt & nut	Boulon essieu & écrou	1	102685
36	Sleeve	Douille	2	103276
37	Grease fitting 1/4" n.f.	Graisser 1/4" n.f.	2	O/L