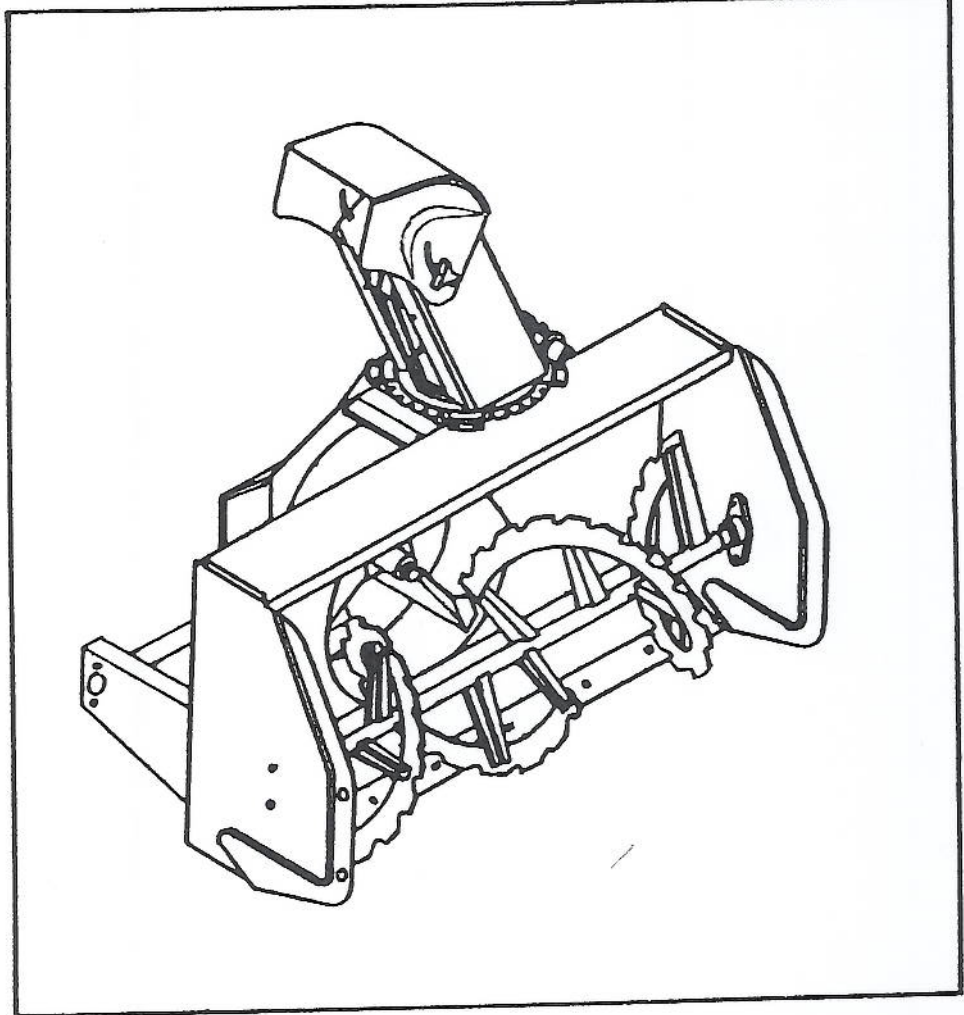


120.

SEARS OWNERS MANUAL

MODEL NO
C944-61021



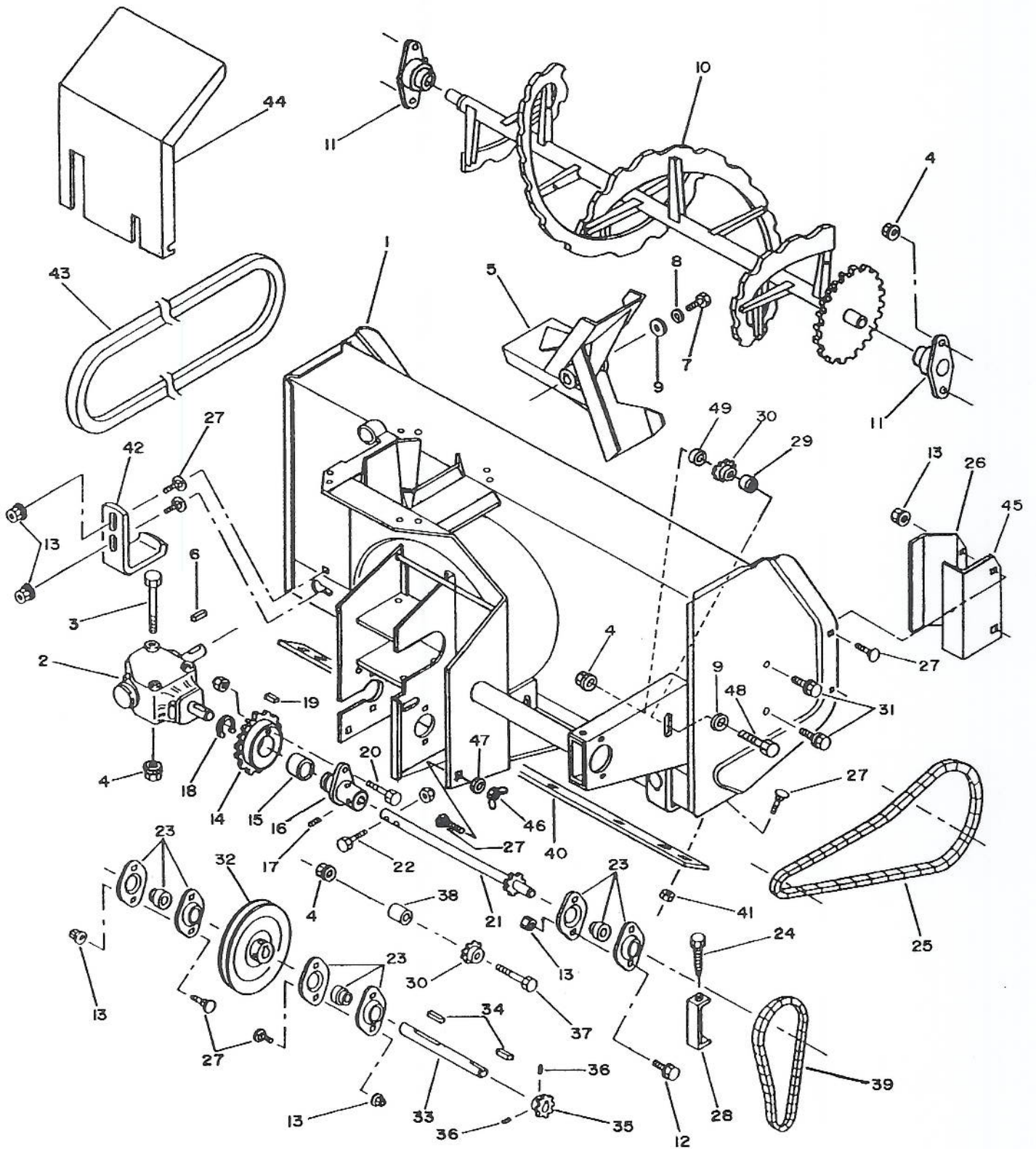
CRAFTSMAN

40" TWO STAGE SNOWBLOWER FOR CRAFTSMAN II GARDEN TRACTOR

Caution:
Read and Follow
All Safety Rules
And Instructions
Before Operating
This Equipment

- Assembly
- Operation
- Maintenance
- Repair Parts

SNOWBLOWER HEAD (40" MODEL)



SNOWBLOWER HEAD (40" MODEL)

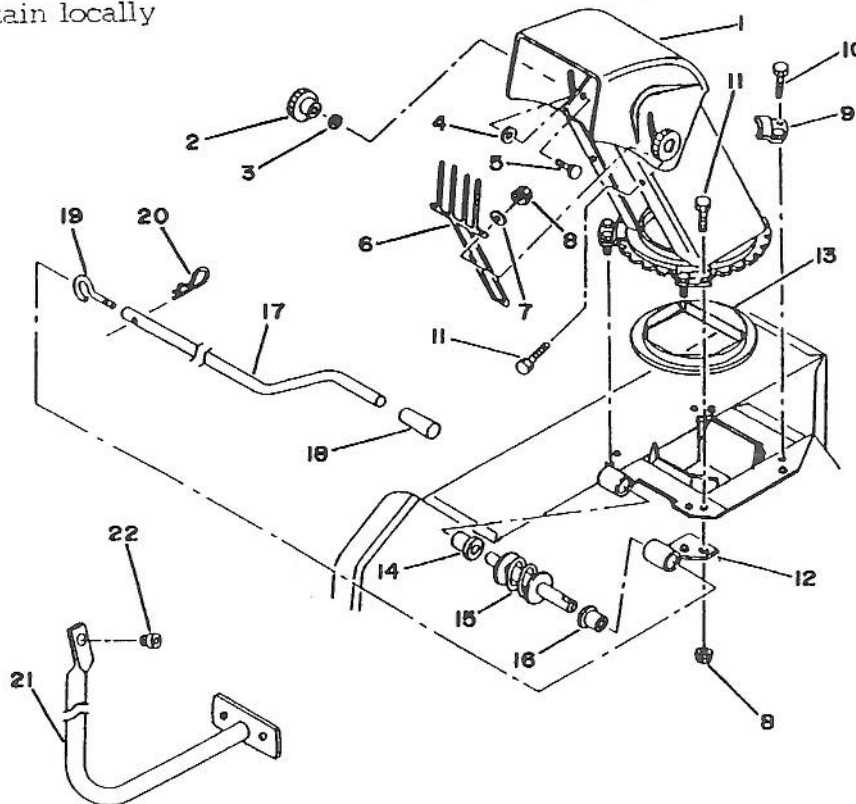
REF	DESCRIPTION	QTY	PART NO.
1	Frame	1	102028
2	Gear box	1	102029
3	Bolt 3/8 X 4"	3	O/L
4	Flange nut 3/8"	9	O/L
5	Fan assembly	1	102001
6	Key 8mm X 7mm X 35mm	1	102035
7	Bolt M8 X 1.25 X 25mm	1	O/L
8	Lock washer 5/16"	1	O/L
9	Flat washer 3/8" dia. hole	2	O/L
10	Auger	1	102000
11	Flange bearing	2	102031
12	Bolt 5/16 X 3/4"	2	O/L
13	Flange nut 5/16"	12	O/L
14	Sprocket	1	102032
15	Bushing	1	102033
16	Shear plate	1	102008
17	Set screw allen 5/16 X 5/16"	2	O/L
18	Snap ring	1	102034
19	Key 8mm X 7mm X 25mm	1	102030
20	Impeller shear bolt (5mm X 0.8 X 40mm) with nylon nut	1	102036
21	Driven shaft	1	102037
22	Auger shear bolt (5mm X 0.8 X 45mm) with nylon nut	1	102038
23	Bearing and flangets ass'y	3	102039
24	Self tapping screw 1/4 X 1/2"	1	O/L
25	Chain roller no 40X 92 links with connecting link	1	102022
-	Connecting link no 40	1	102040
26	Chain guard	1	102010
27	Carriage bolt 5/16 X 3/4"	18	O/L
28	Chain guard	1	102041
29	Spacer 5/8"	1	102242
30	Idler sprocket	2	102027
31	Bolt 3/8 X 1 1/4"	4	O/L
32	Pulley	1	102043
33	Drive shaft	1	102044
34	Key 3/16 X 3/16 X 1"	2	102026
35	Sprocket	1	102045
36	Set screw allen 1/4 X 1/4"	2	O/L
37	Bolt 3/8 X 2 1/2"	1	O/L
38	Idler spacer	1	102046
39	Chain roller no 40 X 40 links with connecting link	1	102021
40	Cutting edge	1	102047
41	Lock nut 5/16"	6	O/L
42	Skid shoe	2	102015
43	Belt	1	102048
44	Reduction cover	1	102090
45	Reinforcing angle	1	102133
46	Nut wing 5/16"	2	O/L
47	Bellville washer 3/8" dia.	2	102144
48	Bolt 3/8 X 2"	1	O/L
49	Spacer 1/4"	1	102241

* O/L : Obtain locally

ROTATION SYSTEM WITH CHUTE

REF	DESCRIPTION	QTY	PART NO.
1	Chute and deflector	1	102058
2	Knob 5/16"	2	102020
3	Nylon flat washer 11/32" dia. hole	2	102009
4	Nylon flat washer 7/16" dia. hole	2	102011
5	Carriage bolt 5/16 X 1"	2	O/L
6	Hand guard	1	102012
7	Flat washer 5/16" dia. hole	2	O/L
8	Flange nut 1/4"	10	O/L
9	Retaining plate	4	102007
10	Bolt 1/4 X 1/2"	6	O/L
11	Bolt 1/4 X 3/4"	24	O/L
12	Worm support	1	102014
13	Rotation ring	1	102016
14	Plastic bushing 1 5/16"	1	102060
15	Rotation worm (cw)	1	102005
16	Plastic bushing 1 11/16"	1	102059
17	Handle	1	102061
18	Handle grip	1	102062
19	Handle hook	1	102006
20	Hair pin 2.5mm X 40mm	1	102013 1020
21	Handle support	1	102019 1022
22	Plastic grommet	1	102063

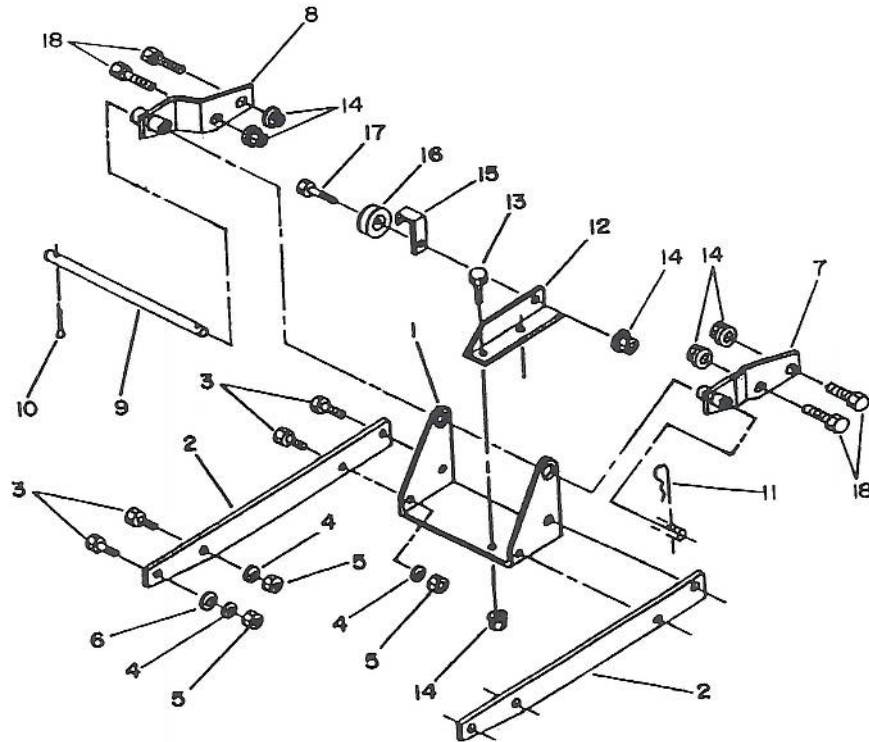
* O/L = Obtain locally



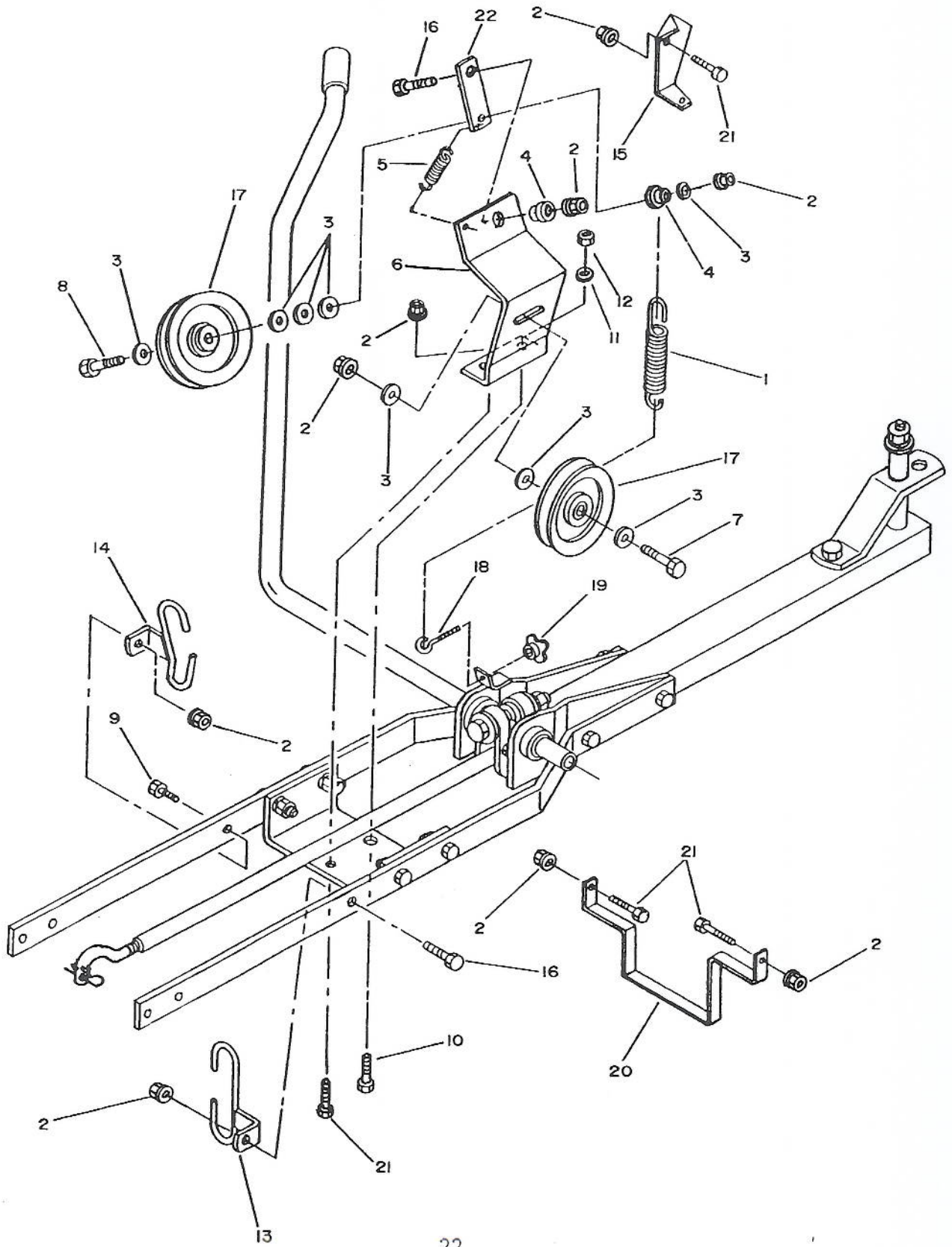
PUSH FRAME

REF	DESCRIPTION	QTY	PART NO.
1	Pivot support	1	102217
2	Attaching flat bar	2	102050
3	Hex bolt 7/16 X 1 1/4"	8	O/L
4	Lock washer 7/16"	8	O/L
5	Hex nut 7/16"	8	O/L
6	Flat washer 1/2" dia. hole	2	O/L
7	Front support bracket L.H.	1	102220
8	Front support bracket R.H.	1	102215
9	Pivot pin	1	102216
10	Cotter pin 5/32 dia. X 1"	1	O/L
11	Hair pin 4mm dia. X 80mm	1	102054
12	Idler support	1	102055
13	Hex bolt 3/8 X 3/4"	2	O/L
14	Flange nut 3/8"	7	O/L
15	Belt guide	1	102056
16	Idler pulley	1	102057
17	Hex bolt 3/8 X 1 3/4"	1	O/L
18	Hex bolt 3/8 X 1"	4	O/L

* O/L = Obtain locally



DRIVE MECANISME



DRIVE MECANISME

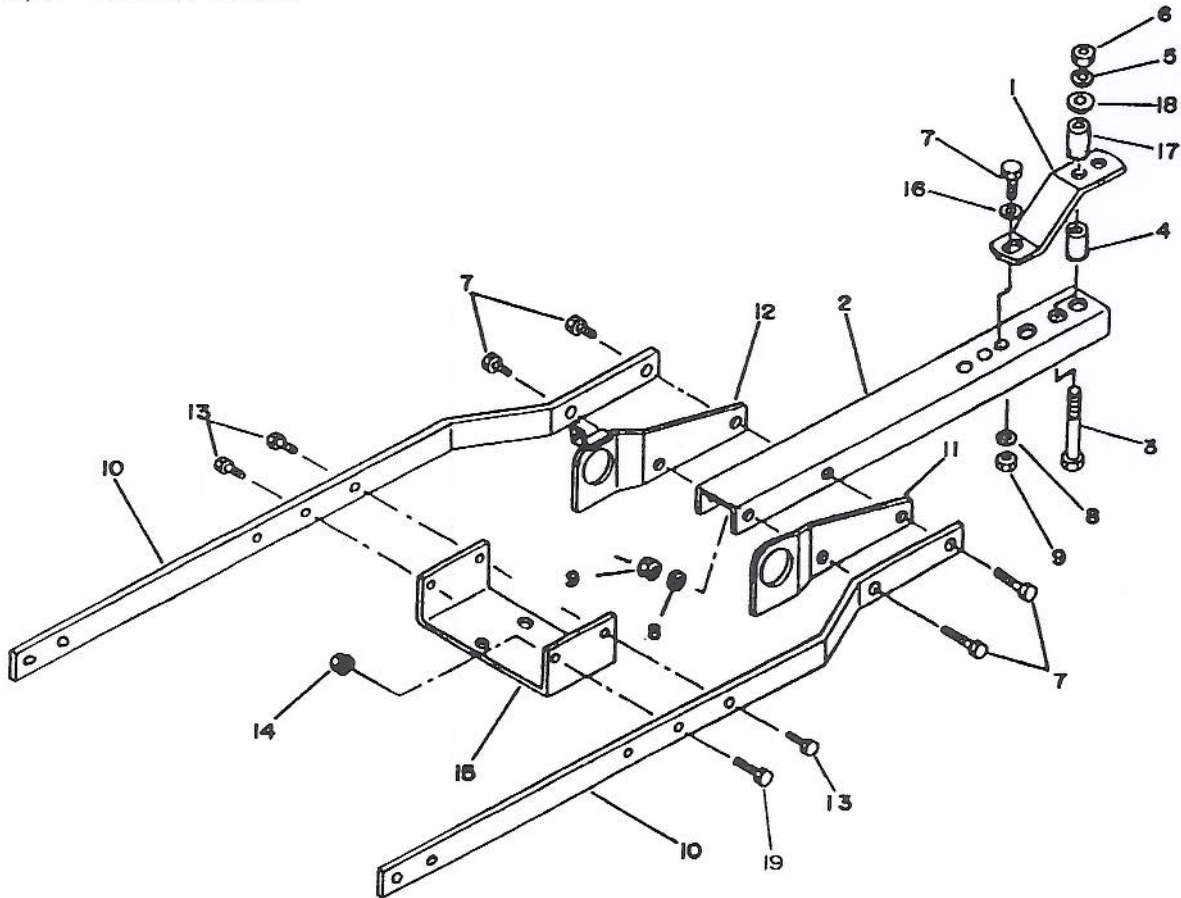
REF	DESCRIPTION	QTY	PART NO.
1	Spring 1 1/8"	1	102004
2	Flange nut 3/8"	9	O/L
3	Flat washer 7/16" dia. hole	8	O/L
4	Flange washer	2	102081
5	Spring 1/2" dia.	1	102003
6	Pulley support bracket	1	102082
7	Bolt 3/8 X 1 3/4"	1	O/L
8	Bolt 3/8 X 2 1/2"	1	O/L
9	Bolt 3/8 X 1"	1	O/L
10	Bolt 7/16 X 1"	1	O/L
11	Lock washer 7/16"	1	O/L
12	Nut 7/16"	1	O/L
13	Belt guide L.H.	1	102083
14	Belt guide R.H.	1	102240
15	Clutch lever	1	102085
16	Bolt 3/8 X 1 1/4"	2	O/L
17	Pulley idler	2	102086
18	Eye bolt 5/16 X 5"	1	102087
19	Knob 5/16"	1	102020
20	Drive belt guide	1	102088
21	Hex bolt 3/8 X 3/4"	4	O/L
22	Tension arm	1	102089

* O/L = Obtain locally

SUBFRAME

REF	DESCRIPTION	QTY	PART NO.
1	Hitch plate	1	102064
2	Channel	1	102065
3	Bolt 5/8 X 6 1/2"	1	O/L
4	Tube spacer 2 1/4"	1	102066
5	Lock washer 5/8"	1	O/L
6	Hex nut 5/8"	1	O/L
7	Hex bolt 7/16 X 1 1/4"	5	O/L
8	Lock washer 7/16"	5	O/L
9	Hex nut 7/16"	5	O/L
10	Subframe flatbar	2	102214
11	Lift support bracket L.H.	1	102068
12	Lift support bracket R.H.	1	102069
13	Hex bolt 3/8" X 1"	3	O/L
14	Flange nut 3/8"	4	O/L
15	Support plate	1	102070
16	Flat washer 1/2" dia. hole	1	O/L
17	Tube spacer 2 11/16"	1	102071
18	Flat washer 11/16" dia. hole	1	O/L
19	Hex bolt 3/8 X 1 1/4"	1	O/L

* O/L = Obtain locally



LIFT MECANISM ASSEMBLY

REF	DESCRIPTION	QTY	PART NO.
1	Hex bolt 3/8 X 2 1/4"	2	O/L
2	Lock nut 3/8"	2	O/L
3	Lift lever	1	102072
4	Adjustment rod	1	102073
5	Push arm	1	102074
6	Pin 17/32 X 2 1/4"	1	102079
7	Cotter pin 5/32 dia. X 1"	1	O/L
8	Bearing flange	2	102075
9	Lift arm	1	102076
10	Tube spacer	2	102077
11	Bolt 5/8 X 4"	1	O/L
12	Flat washer 11/16" dia. hole	2	O/L
13	Bent retainer plate	2	102078
14	Lock washer 5/8"	1	O/L
15	Nut 5/8"	1	O/L
16	Hair pin 4mm dia. X 80mm	1	102054
17	Handle grip	1	102025

* O/L = Obtain Locally

