



Ingersoll

**FRONT CUT TRACTORS
5720V, 5818V, 5820V, AND 5822K
Parts Catalog 8-3340**

[HOME](#)

[TRACTORS](#)

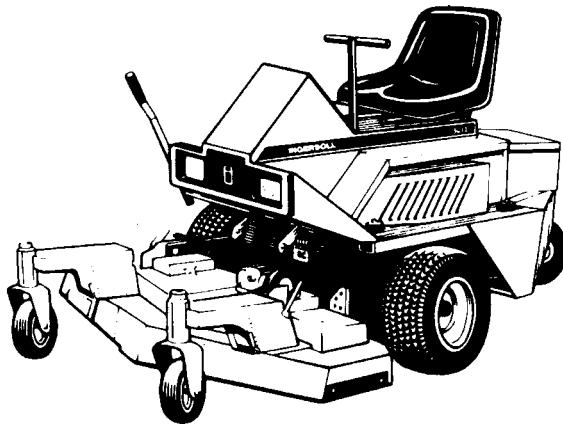
[ATTACHMENTS](#)

[INDEX](#)

[PAINT](#)

[ENGINES](#)

[GENERAL INFO](#)



**PRODUCT IDENTIFICATION NUMBERS (P.I.N.)
OR SERIAL NUMBERS (S/N)**

The P.I.N. for your front cut mower is located on a sticker placed on the inside of the base near the battery. Other components will have the P.I.N. attached individually. Example (engines, transmissions, etc.).

ENGINE IDENTIFICATION

TRACTOR MODEL	ENGINE MODEL
5720V, 5820V	BRIGGS & STRATTON VANGUARD ENGINE MODEL 351447 SPEC. 1192
5818V	BRIGGS & STRATTON VANGUARD ENGINE MODEL 350447 SPEC. 0139
5822K	KOHLER COMMAND ENGINE MODEL CH22QS

IMPORTANT NOTICE: In this catalog, engine parts and warranty are to be handled by your local engine distributor.

CONTACT YOUR LOCAL ENGINE DISTRIBUTOR

INDEX

There is an index at the front of this catalog. The front index is an alphabetical index of the major groups or assemblies.

ILLUSTRATION

Each illustration in this catalog shows a group of parts or components. These parts and components are aligned approximately as the parts and components on your machine. Each part and component in an illustration has a reference number. These reference numbers are in a list on the page opposite of the illustration. Next to the reference number is the part number, description and required quantity of the part shown in the illustration.

UAR - "Use as required" indicates that the part quantity is variable.

NSS - "Not sold separately" indicates that the part is only available as component of an assembly or the part must be purchased locally. If the part is an assembly component, the description will be indented under the assembly description in the parts list.

O/L - "Obtain locally"

- "Footnotes" are added to a part number when more information is needed for identification. They only relate to the part numbers indicated. All orders must include the following information:

1. Correct part number.

PARTS ORDERS

2. Complete description of part or component.
3. Total quantity of each part or component.
4. Product model number.
5. All necessary product identification numbers.
6. Method for sending the parts.
7. Complete and correct address.

CATALOG REVISIONS

As the product changes, new pages will be available for your catalog. A notice will be issued.

IMPORTANT: Put all revisions into the catalog as soon as possible.

RIGHT HAND AND LEFT HAND IDENTIFICATION

The words right hand (RH) and left hand (LH) as used in this catalog indicate the direction while you are in the operator's seat in the normal operating position.

INDENTED DESCRIPTIONS

An assembly can have many components. The components of an assembly are indicated by an indented description. The quantity for an indented part is the total needed for that complete assembly. See the example.

REF.	PART NO.	DESCRIPTION	REQ'D
	C 55159	CYLINDER ASSY - rear steering	1
28	C 56208	SOCKET ASSY - rear cylinder	1
29	C 55956	PLUG - adjusting, socket assy	1
30	C 55957	SEAT- socket, ball.....	2
31	C 56210	SPRING-socket	1
32	C 56209	SEAT - socket spring	1
33	G 45175	CLAMP ASSY - socket assy	1
	16- 836	BOLT-1/2"x2-1/4" N.F. hex.....	1
34	132- 104	PIN-cotter, 3/16"x3"	1
35	C 55889	STUD - ball, socket & cylinder	2
36	13- 410	BOLT-1/4"x5/8"N.C.,hex	4
37	92- 4	LOCK WASHER - 1/4"SAE	4

5720V, 5818V, 5820V, AND 5822K

ALPHABETICAL INDEX

Booster Fan.....	5	Drive Assembly R.H.....	23
Engine and Attaching Parts - VANGUARD.....	5	Drive Assembly L.H	25
Engine and Attaching Parts - KOHLER.....	7	Transmission - ZT Drive.....	27
Electric Clutch - KOHLER.....	7	Hydrostatic Pump - ZT Drive.....	29
Electric Clutch - VANGUARDS.....	9	Parking Brake	31
Fuel System	9	Steering Cable Kit	33
Base Assembly	11	Lift Lever	33
Body Assembly - 5720V.....	13	Hydraulic System	35
Body Assembly – 5818V, 5820V, 5822K.....	15	Electric Deck Lift (includes wiring diagram) ..	37
Seat Lid and Steering	17	Electrical System - VANGUARDS	39
Dual Tail Wheel.....	19	Electrical System - KOHLER	41
Single Tail Wheel	21	Decals	43
Pump Drive Cross Shaft	21		



Ingersoll

Paint & Oil

INDEX

PAINT

Power Red Gloss

16-ounce Aerosol Can..... C28484
Quart C28485

Power White

16-ounce Aerosol Can..... C28812
Quart C28845

Power Yellow (Older 600 Series)

16-ounce Aerosol Can..... C28847
Quart C28848

Power Tan (6000 Series)

16-ounce Aerosol Can..... C28853
Quart C28854

Desert Sunset (Older 400 Series)

16-ounce Aerosol Can..... C28846
Quart C28852

Black, Semi Gloss

16-ounce Aerosol Can..... C28849
Quart C28850

Black, High Heat

16-ounce Aerosol Can..... C28851

Silver

16-ounce Aerosol Can..... C30870

M & W Plum

16-ounce Aerosol Can..... 10-5688

Grazer Grey

16-ounce Aerosol Can..... C38444
Quart C38982

Odyssey Charcoal Grey

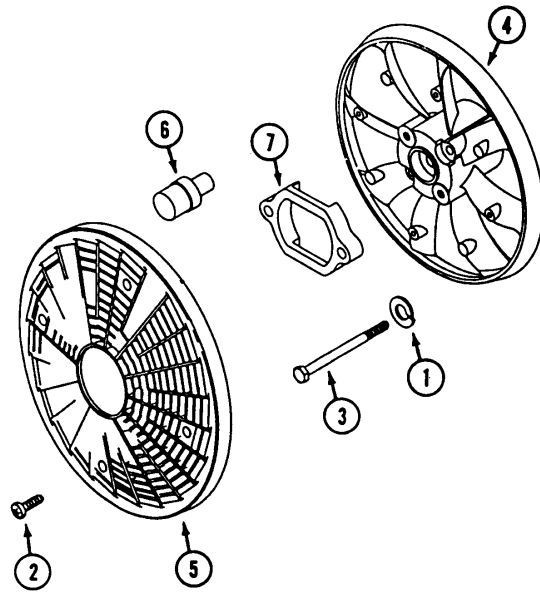
16-ounce Aerosol Can..... C47171

HYDRAULIC OIL

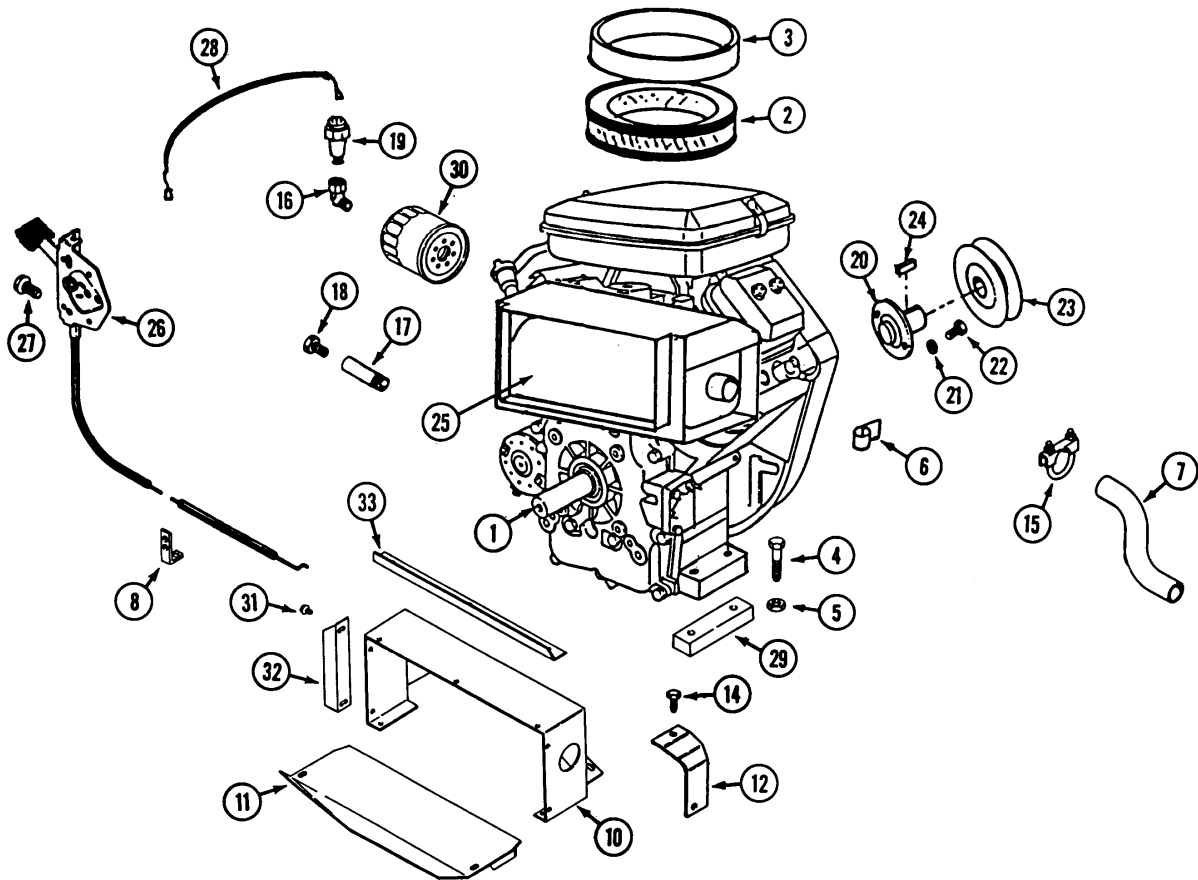
20W40, Use 32 Degrees and above.
12-Quart Case..... C32778

5W20, Use Below 32 Degrees.
12-Quart Case..... C32777

INDEX



INDEX



INDEX**BOOSTER FAN
(5720V, 5818V, 5820V)**

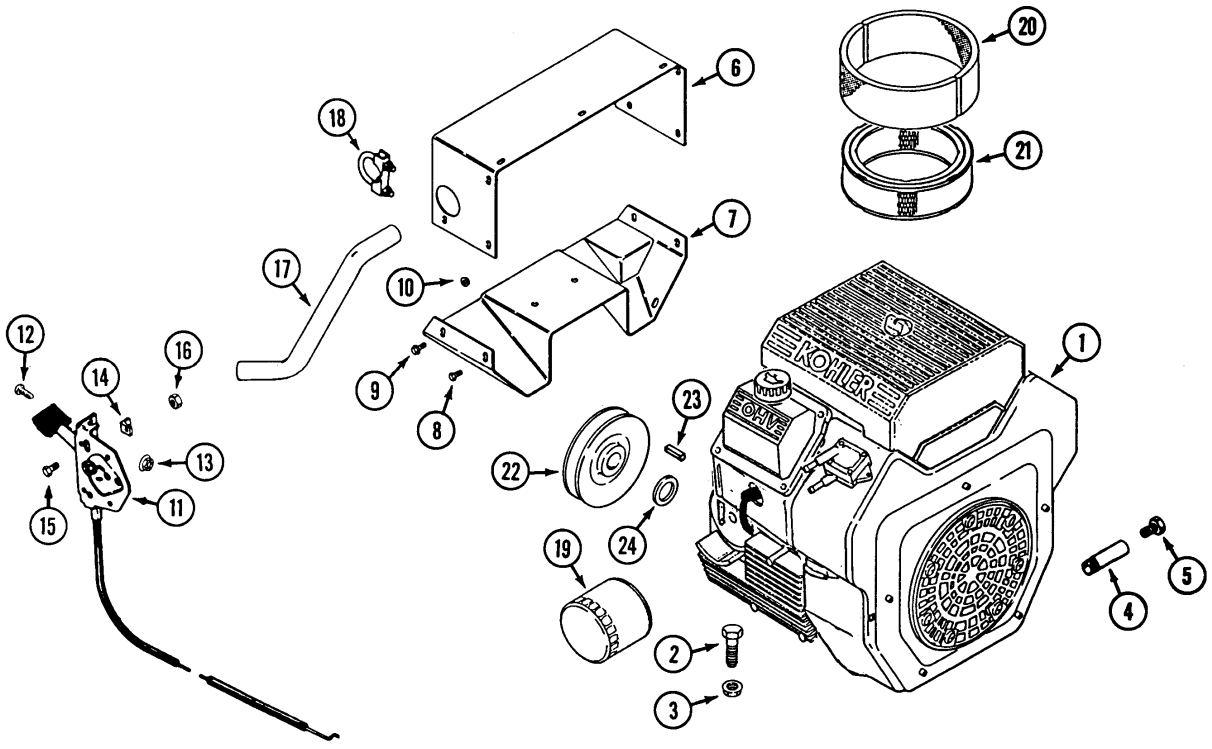
REF.	PART NO.	DESCRIPTION	REQ'D
1	C44857	LOCKWASHER.....	2
2	BR93805	SCREW.....	4
3	C44858	SCREW.....	2
4	C44859	FAN - booster.....	1
5	C44860	SCREEN - rotating.....	1
6	C44861	PIN - pilot.....	1
7	C46079	SPACER-fan.....	1

**ENGINE AND ATTACHING PARTS
(5720V, 5818V, 5820V)****BRIGGS & STRATTON VANGUARD MODEL****(See your local engine dealer for other parts and repairs)**

1	C46506	ENGINE - Briggs & Stratton Model 351447, type 1192 (20 hp).....	1
2	C37544	ELEMENT - air cleaner.....	1
3	C37543	PRE - CLEANER.....	1
4	113-119	BOLT - 5/16" - 18 X 2-3/4".....	4
5	131-69	NUT - 5/16" - 18.....	4
6	C32455	CLIP - "J".....	2
7	C46563	PIPE - exhaust.....	1
8	C37536	BRACKET - wire stand off.....	1
10	C46564	DUCT - muffler, upper.....	1
11	C46568	DUCT - bottom.....	1
12	C45111	SUPPORT duct.....	2
14	C45273	SCREW - M6x10.....	3
15	C28294	CLAMP - exhaust.....	2
16	221-411	FITTING - street elbow, 1/8" - 27 NPT 90°.....	1
17	C33949	NIPPLE - pipe 3.5.....	1
18	218-5154	PLUG - 1/2"-20.....	1
19	C46222	UNIT - oil sending.....	1
20	C37537	SHAFT - stub.....	1
21	192-21	LOCKWASHER - 3/8".....	2
22	113-207	BOLT - 3/8" - 16 x 1".....	2
23	C37539	PULLEY - engine (includes 83-55 set screw).....	1
24	C41 015	KEY - 1/4" x 1/4" x 1".....	1
25	C46507	MUFFLER.....	1
26	C37819	CABLE - choke.....	1
26	C37820	CABLE - throttle.....	1
27	C39403	SCREW - #12 X 1/2".....	2
28	C46218	HARNESS - wire.....	1
29	C46562	SPACER - engine mount.....	2
30	C34374	FILTER - oil.....	1
31	187-1328	SCREW - #8 - 18 x 3/4.....	9

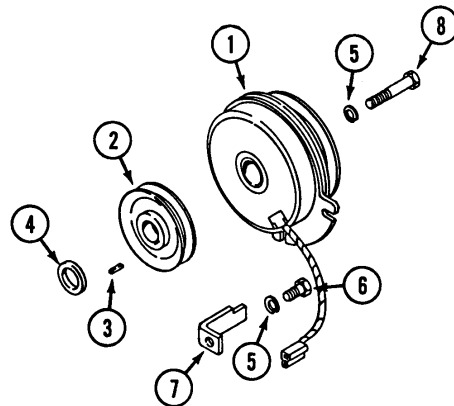
INDEX

**ENGINE AND ATTACHING PARTS
KOHLER COMMAND MODEL
(5822K)**



INDEX

**ELECTRIC CLUTCH (PTO) AND DRIVE PULLEY
(5822K)**



INDEX**ENGINE AND ATTACHING PARTS
KOHLER COMMAND MODEL
(5822K)**

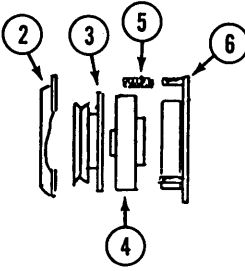
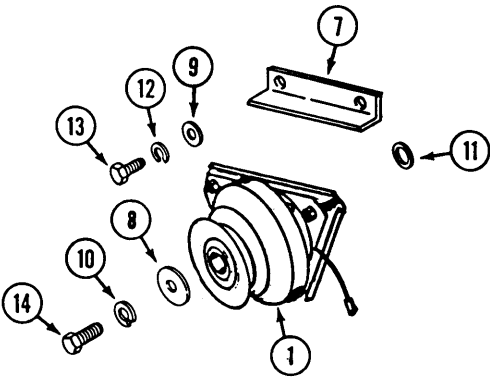
REF.	PART NO.	DESCRIPTION	REQ'D
1	C46505	ENGINE - 22 hp KOHLER	1
2	113-233	BOLT - 3/8" 16 x 1-3/4"	4
3	131-1352	NUT - 3/8" - 16 flange, lock	4
4	C33757	NIPPLE - oil drain	1
5	218-5154	PLUG - 1/2" - 20	1
6	C46569	SHIELD - upper exhaust	1
7	C46570	SHIELD - lower exhaust	1
8	C37200	SCREW - 6M x 10	9
9	121-21	BOLT - 1/4" - 20 x 1/2" flange	2
10	131-934	NUT - 1/4" - 20 flange lock	2
11	C46573	CABLE - choke	1
11	C46574	CABLE - throttle	1
12	182-573	SCREW - #10 - 24 x 1/2 black	4
13	C34117	NUT - #10 - 24 flange lock	4
14	C37630	BRACKET - stop	2
15	113-3	BOLT - 1/4" - 20 x 3/4"	2
16	131-71	NUT - 1/4" - 20 lock	2
17	C46563	PIPE - exhaust	1
18	C28294	CLAMP - pipe 1-1/8"	1
19	C43754	FILTER - oil	1
20	C43755	PRECLEANER	1
21	C43756	ELEMENT - air cleaner	1
22	C46632	PULLEY - drive	1
23	C46633	KEY - pulley	1
24	C33200	SPACER - 1/4"	1

INDEX**ELECTRIC CLUTCH (PTO) AND DRIVE PULLEY
(5822K)**

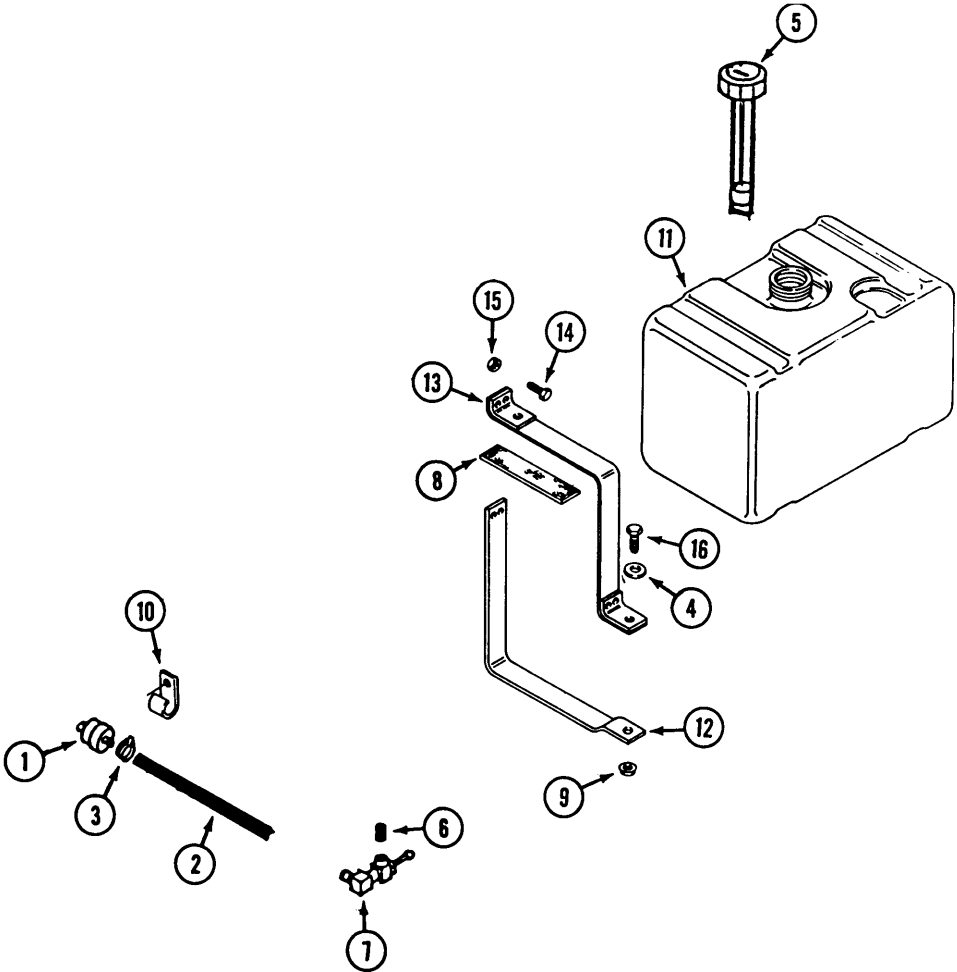
REF.	PART NO.	DESCRIPTION	REQ'D
1	C46504	CLUTCH ASSEMBLY	1
2	C46632	PULLEY	1
3	C46633	KEY - 1/4" X 1-1/16"	1
4	C33200	SPACER - 1/4"	1
5	192-22	LOCKWASHER - 7/16"	2
6	113-310	BOLT - 7/16" - 14 x 1"	1
7	C37562	BRACKET - clutch stop	1
8	114-326	BOLT - 7/16" - 20 x 2 -1/2"	1

INDEX

ELECTRIC CLUTCH (PTO)
(5720V, 5818V, 5820V)



INDEX



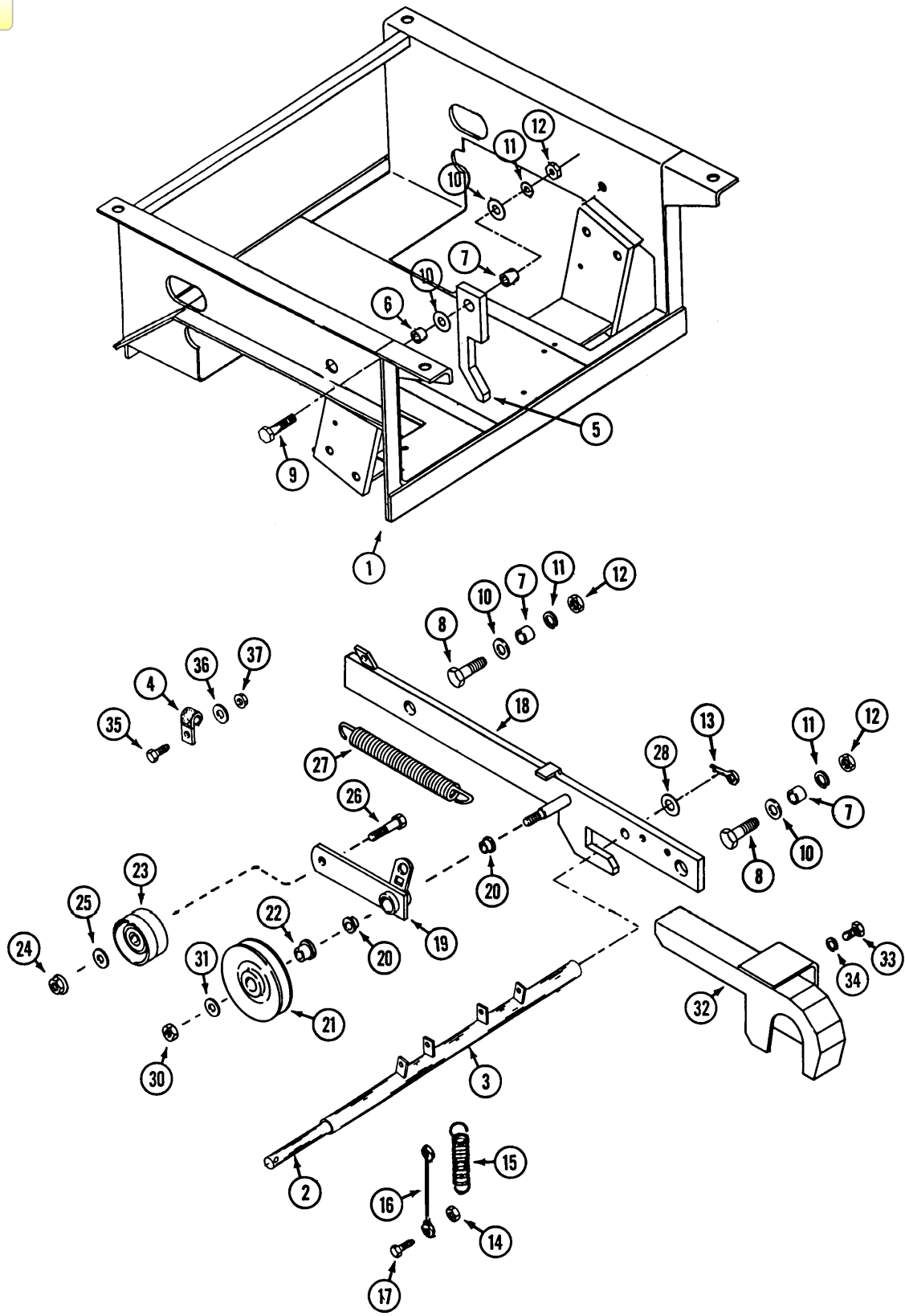
INDEX**ELECTRIC CLUTCH (PTO)
(5720V, 5818V, 5820V)**

REF.	PART NO.	DESCRIPTION	REQ'D
1	C37511	CLUTCH ASSEMBLY	1
2	C37549	BRAKE - clutch.....	1
3	C37550	ARMATURE - clutch.....	1
4	C37551	ROTOR - clutch.....	1
5	C37552	KIT - spring and nut (3 each).....	1
6	C37553	COIL - clutch.....	1
7	C37562	BRACKET - clutch stop.....	1
8	C31615	WASHER - retaining	1
9	195-104	WASHER - 7/16"	2
10	192-21	LOCKWASHER - 3/8"	1
11	C31614	WASHER - 1-1/8" spacer	1
12	192-22	LOCKWASHER - 7/16"	2
13	113-312	BOLT - 7/16"-14x1-1/4"	2
14	114-203	BOLT - 3/8" - 24 x 1-1/2"	1

INDEX**FUEL SYSTEM**

1	C37554	FILTER - fuel.....	1
2	C44027	HOSE - fuel (cut to length).....	1
3	214-103	CLAMP - hose.....	4
4	195-521	WASHER - 5/16"	2
5	C45334	CAP - fuel tank (with gauge)	1
6	221-1101	NIPPLE - pipe 1/8"	1
7	C37811	VALVE-shutoff.....	1
8	C34189	CUSHION - reservoir	2
9	131 -911	NUT - 5/16" - 18 flange lock.....	2
10	C32455	CLIP - "J" fuel line	1
11	C45333	TANK - fuel (2-1/4" filler tube) (plastic)	1
12	C45061	BRACKET - fuel tank	1
13	C45062	STRAP - fuel tank	1
14	113-17	BOLT - 1/4" - 20 lock.....	2
15	131 -71	NUT - 1/4" - 20 lock.....	2
16	113-103	BOLT - 5/16" 18 x 1"	2

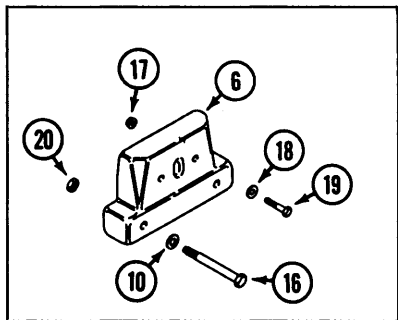
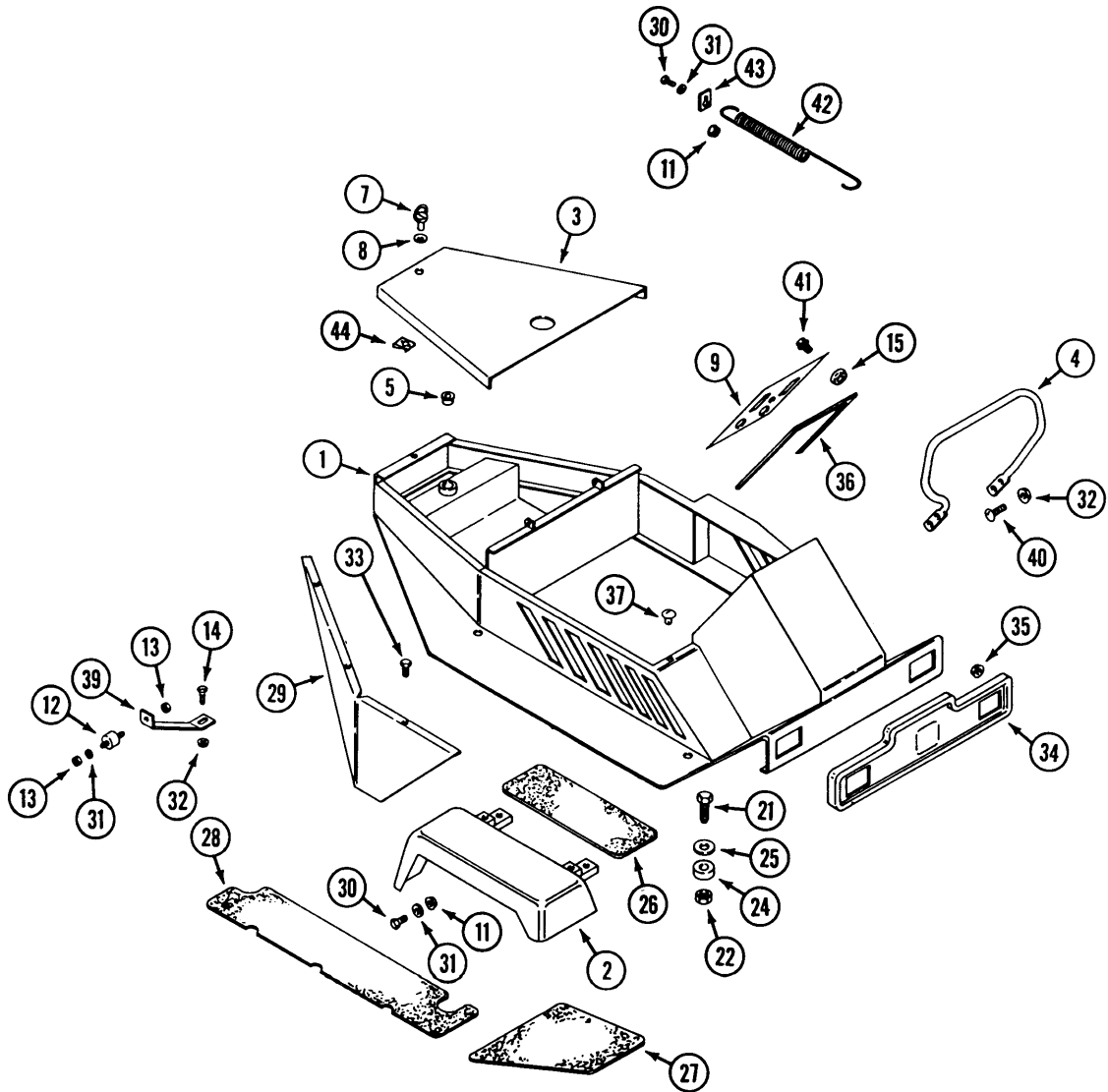
INDEX



BASE ASSEMBLY

REF.	PART NO.	DESCRIPTION	REQ'D
1	C46530	BASE.....	1
2	C37578	PIN - cross bar.....	1
3	C37579	BAR - cross.....	1
4	C32455	CLIP - "J".....	2
5	C37583	LOCK - forward nose down.....	2
6	C37576	BUSHING - pivot (3/8" long).....	1
7	C46622	BUSHING - pivot (1/2" long).....	5
8	113-410	BOLT- 1/2"-13 x1-1/2".....	4
9	113-441	BOLT - 1/2" - 13 x 2-1/4".....	1
10	195-105	WASHER - 1/2".....	6
11	192-23	LOCKWASHER - 1/2".....	5
12	129-105	NUT- 1/2"- 13.....	3
13	132-310	PIN - cotter 1/8" x 1".....	2
14	131-71	NUT - lock 1/4" - 20.....	4
15	C37815	SPRING - lift assist.....	2
16	C37816	CABLE - lift.....	2
17	113-4	BOLT - 1/4" - 20 x 1".....	4
18	C46620	ARM - deck R.H.....	1
18	C46616	ARM - deck L.H. (shown).....	1
19	C46623	ARM - idler.....	1
20	C27501	BEARING - flange.....	2
21	C25370	PULLEY - "V" idler.....	1
22	C45102	BUSHING - pulley.....	1
23	C45121	PULLEY - idler, flat.....	1
24	131-938	NUT - 3/8" - 16 flange lock.....	1
25	195-104	WASHER - 3/8".....	1
26	113-219	BOLT - 3/8" - 16 x 2".....	2
27	C44242	SPRING - extension.....	1
28	195-106	WASHER - 9/16" x 1-3/8".....	2
30	131-1182	NUT - 1/2"-13 lock.....	1
31	195-533	WASHER -1/2".....	1
32	C46613	GUARD - belt.....	1
33	113-102	BOLT - 5/16" - 18 x 3/4".....	2
34	192-20	LOCKWASHER.....	2
35	113-103	BOLT - 5/16" - 18 x 1".....	2
36	195-102	WASHER - 5/16".....	2
37	131-911	NUT - 5/16" - 18 flange lock.....	2

BODY ASSEMBLY (5720V)

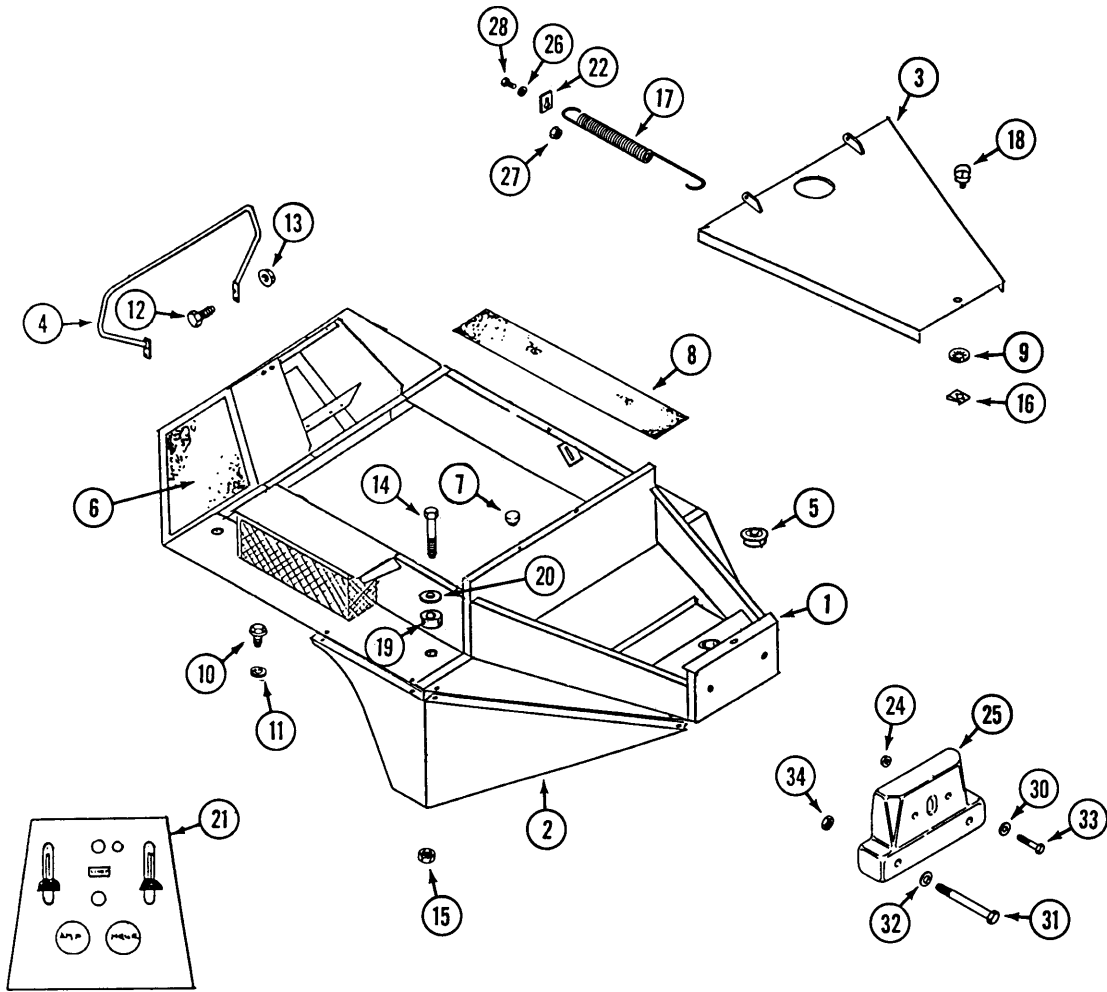


INDEX

**BODY ASSEMBLY
(5720V)**

REF.	PART NO.	DESCRIPTION	REQ'D
1	C46541	BODY	1
2	C39534	FENDER - R.H.....	1
2	C40645	FENDER - L.H.....	1
3	C46555	COVER - back.....	1
4	C44844	BAR - handle.....	1
5	C37824	BEARING - rear wheel fork.....	2
6	NSS	WEIGHT - tail (order from whole goods) W48 kit.....	1
7	C46559	STUD - retaining	1
8	C46560	RETAINER - stud	1
9	C42053	PANEL - dash	1
10	195-541	WASHER - 5/8"	2
11	131-934	NUT - flange lock	3
12	C43012	MOUNT - rubber	2
13	131-71	NUT - 1/4" - 20 lock.....	4
14	131-102	BOLT - 5/16" - 18 x 3/4"	2
15	C34117	NUT - #10-24 flange lock	2
16	113-650	BOLT - 5/8" - 11 x 6-1/2"	2
17	131-1352	NUT - 3/8" flange, lock	2
18	195-525	WASHER - 3/8"	2
19	113-213	BOLT - 3/8" x 16 x 2-1/4"	2
20	131-356	NUT - 5/8" - 11 lock.....	2
21	113-427	BOLT - 1/2" - 13 x 3-1/4"	4
22	131-70	NUT - 1/2" lock.....	4
24	C37818	MOUNT - body, rubber.....	8
25	C37581	WASHER - mount, body	4
26	C39524	PAD - fender	2
27	C39525	PAD - footrest, front L.H.....	1
27	C39526	PAD - footrest, front R.H. (shown)	1
28	C44957	PAD - footrest, rear LH.....	1
28	C44958	PAD - footrest, rear R.H. (shown)	1
29	C46627	SKIRT - LH.....	1
29	C46629	SKIRT - R.H.....	1
30	113-3	BOLT - 1/4" - 20 x 3/4"	3
31	195-102	WASHER - 1/4"	5
32	131-911	NUT - 5/16" - 18 flange lock.....	10
33	C42056	BOLT - 5/16" - 18 x 5/8" black.....	10
33	C42057	BOLT - 5/16" - 18 x 1-3/4" black	4
34	C44973	PLATE - face.....	1
35	131-971	NUT - #8 - 32 flange lock	2
36	C38790	TRIM - 27" (cut to length)	1
37	C35067	BUMPER - nylon	4
39	C46631	BRACKET - fender support.....	2
40	C42056	BOLT - 5/16" - 18 x 5/8"	4
41	182-573	SCREW - #10 - 24 x 1/2"	4
42	C46105	SPRING - extension.....	1
43	C42903	BRACKET - mounting	1
44	C46561	RECEPTACLE - stud.....	1

BODY ASSEMBLY (5818V, 5820V, 5822K)

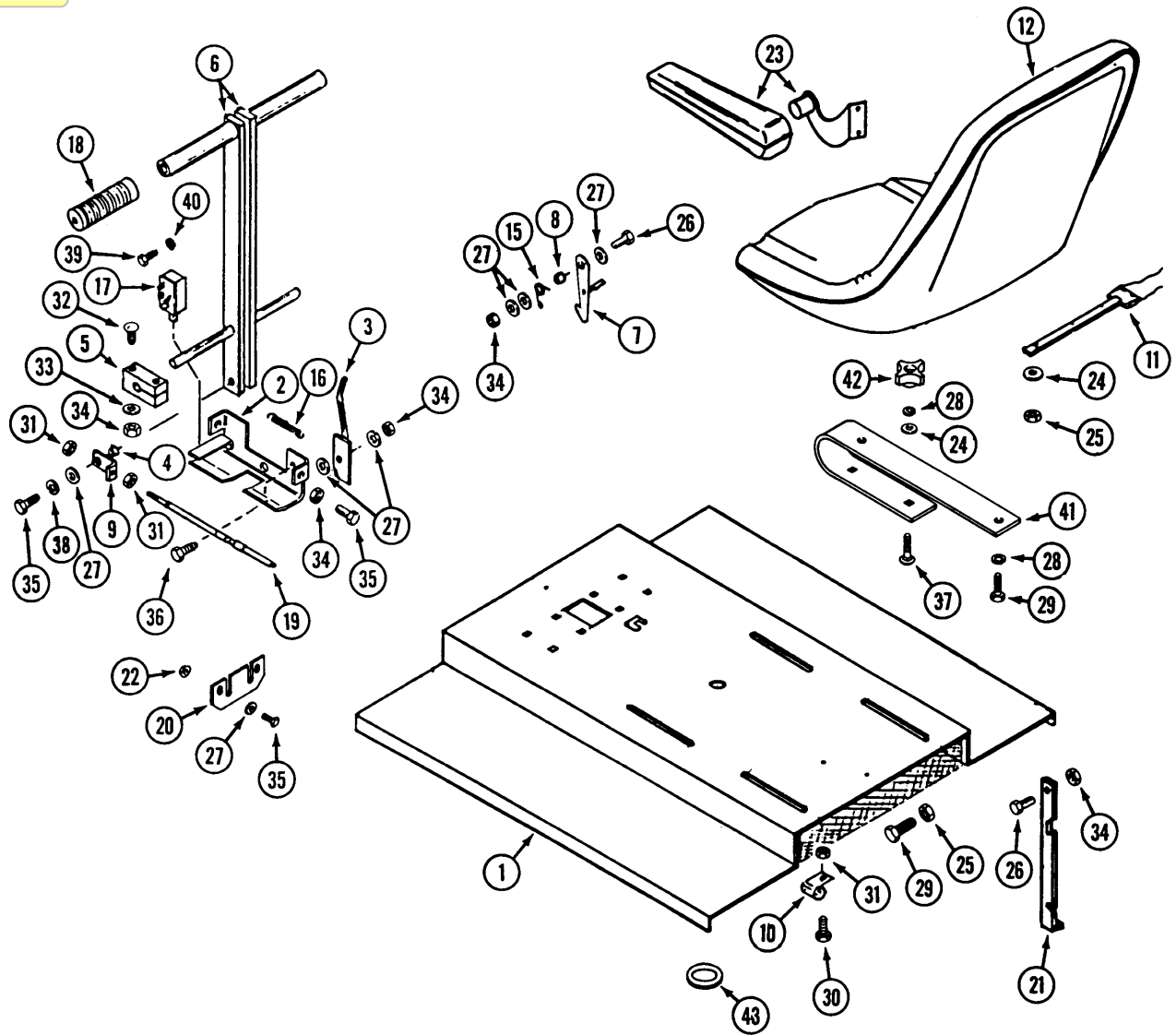


INDEX

**BODY ASSEMBLY
(5818V, 5820V, 5822K)**

REF.	PART NO.	DESCRIPTION	REQ'D
1	C46545	BODY	1
2	C41175	FENDER - L.H. (Shown)	1
2	C41179	FENDER - RH	1
3	C46555	COVER - rear	1
4	C44844	GUARD RAIL	1
5	C37824	BEARING	2
6	C43419	PAD - L.H. front, foot	1
6	C43420	PAD - R.H. front, foot	1
7	C35067	BUMPER - nylon	4
	C44036	TRIM - tower and rear lid (not shown)	1
8	C43421	PAD - R.H. side, foot	1
9	C46560	RETAINER - stud	1
10	C34808	BOLT - 1/4" - 20 x 3/4" tapping	8
11	192-19	LOCKWASHER - 1/4"	8
12	C42056	BOLT - 5/16" - 18 x 5/8" black	4
13	131-911	NUT - 5/16" - 18 flange lock	4
14	113-427	BOLT - 1/2" - 13 x 3-1/4"	4
15	131-70	NUT - 1/2" - 13 lock	4
16	C46561	RECEPTACLE - stud	1
17	C46105	SPRING - extension	1
18	C46559	FASTENER - stud	1
19	C37818	MOUNT - body, rubber	8
20	C37581	WASHER - body mount	4
21	C37821	DASH BOARD	1
	182-573	SCREW - #10 - 24 X 1/2" (used on dash board)	4
	C34117	NUT - #10 - 24 flange lock (used on dash board)	2
22	C42903	BRACKET - mounting	1
24	131-1352	NUT - flange lock	2
25	NSS	WEIGHT - tail (order from whole goods) W48 kit	2
26	195-102	WASHER - 5/16" x 3/4"	1
27	131-934	NUT - 1/4" - 20 flange, lock	1
28	113-3	BOLT - 1/4" - 20 x 3/4"	1
30	195-525	WASHER - 3/8"	2
31	113-650	BOLT - 5/8"-11x6-1/2"	2
32	195-541	WASHER - 5/8"	2
33	113-213	BOLT - 3/8" - 16 x 2-1/4"	2
34	131-356	NUT - 5/8" - 11 lock	2

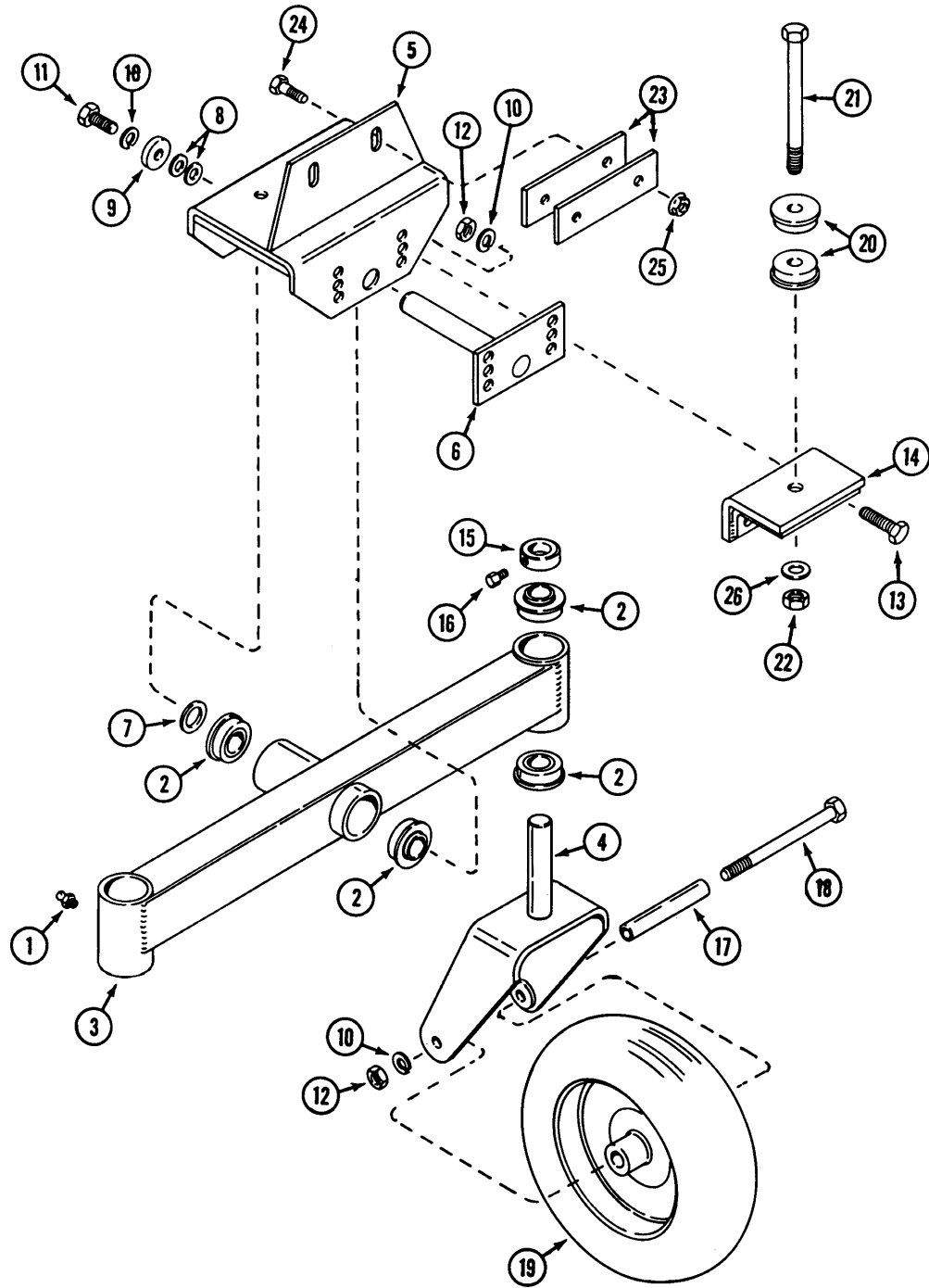
INDEX



SEAT LID AND STEERING

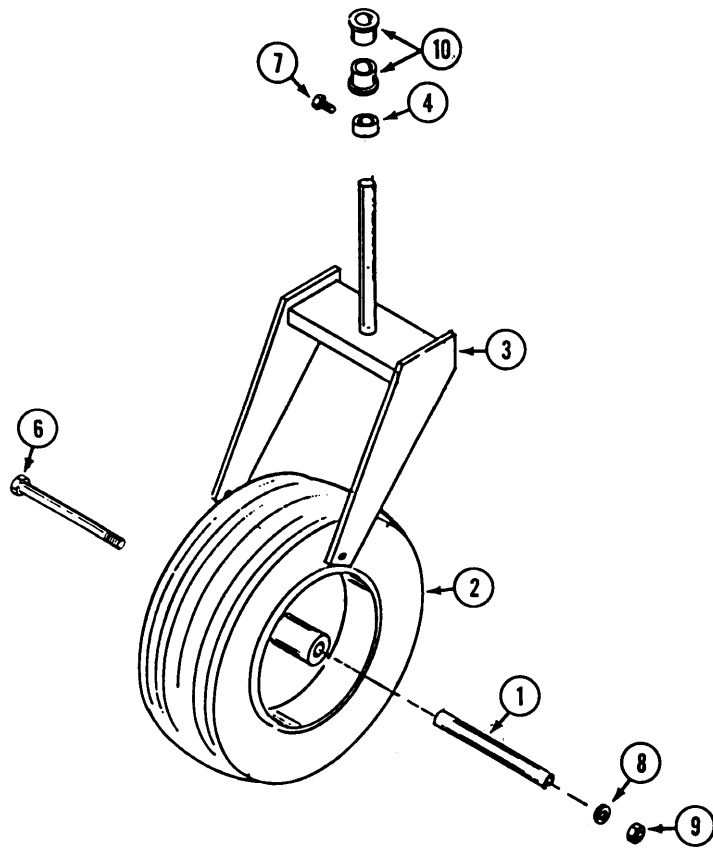
REF.	PART NO.	DESCRIPTION	REQ'D
1	C46551	LID - seat.....	1
2	C46588	BRACKET - lever lock.....	1
3	C46591	LATCH - lever lock.....	1
4	C42895	BUSHING.....	2
5	C37842	BEARING - block.....	4
6	C46586	LEVER - steering.....	4
7	C46659	LATCH - seat lid.....	1
8	C44498	SPACER - latch.....	1
9	C42896	BRACKET - steering cable end.....	4
10	C32455	RETAINER - harness, seat lid.....	1
11	C45537	SWITCH - seat.....	1
12	C44982	SEAT.....	1
15	C37851	SPRING - latch, seat lid.....	1
16	C37837	SPRING - bracket, lever lock.....	1
17	C37521	SWITCH - safety.....	1
18	C37631	GRIP - handle.....	2
19	C42894	CABLE - steering (See page 33).....	2
20	C46592	CLAMP - steering cable.....	2
21	C45471	PROP - seat lid.....	1
22	131-934	NUT - 1/4" - 20 flange lock.....	2
23	NSS	KIT - arm rest (optional) (order as whole goods item)	
24	195-103	WASHER - 5/16".....	4
25	131-69	NUT - 5/16".....	4
26	113-4	BOLT - 1/4" -20 x 1-1/4".....	2
27	195-102	WASHER - 1/4".....	7
28	192-20	LOCKWASHER - 5/16".....	8
29	113-103	BOLT - 5/16"-18x1".....	6
30	182-528	SCREW - #10 - 32 x 1/2".....	2
31	193-1000	NUT- #10-32.....	6
32	111-114	BOLT - 1/4" - 20 x 1-1/2" carriage.....	8
33	195-521	WASHER - 1/4".....	10
34	131-71	NUT - 1/4" - 20 lock.....	13
35	113-3	BOLT - 1/4" - 20 x 3/4".....	5
36	113-17	BOLT - 1/4" - 20 x 1-1/4".....	1
37	111-256	BOLT - carriage 5/16" - 18 x 1-1/4".....	4
38	192-19	LOCKWASHER - 1/4".....	2
39	182-525	SCREW - #10 - 32 X 3/8".....	1
40	192-18	LOCKWASHER - 3/16".....	1
41	C43137	SPRING - seat.....	2
42	C43438	KNOB - seat.....	4
43	C25165	GROMMET - 1" x 1-3/4".....	1
	C22947	TIE - nylon.....	1
	C37830	TRIM - edge (12 - 3/4") cut to length.....	3

INDEX

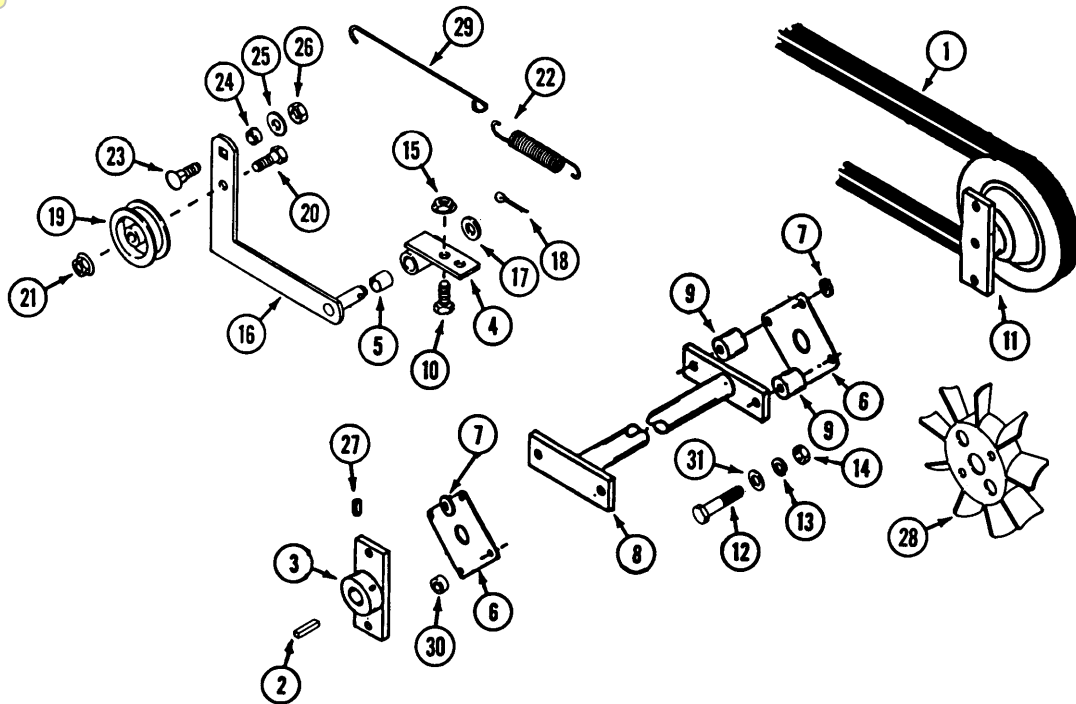


REF.	PART NO.	DESCRIPTION	REQ'D
1	219-20	FITTING - lubrication 1/4 - 28	3
2	C37824	BEARING - ball 1"	6
3	C45610	AXLE - dual wheel.....	1
4	C45645	FORK - wheel.....	2
5	C45618	MOUNT - axle	1
6	C45689	ROD - axle pivot.....	1
7	C14919	WASHER - 1" x 1-3/4".....	UAR
8	195-2067	WASHER - 1/2" x 1	UAR
9	C45841	WASHER - 1/2 x 1-318"	1
10	192-23	LOCKWASHER - 1/2"	5
11	113-417	BOLT - 1/2" - 13 x 1-1/4"	1
12	129-105	NUT - 1/2 - 13	4
13	113-412	BOLT - 1/2" - 13 x 1-3/4"	2
14	C45708	MOUNT - axle, front extension	1
15	C37860	COLLAR - set 1".....	2
16	85-58	SCREW - set 5/16" - 18 x 1/2" square head	1
17	C37915	TUBE - axle.....	2
18	113-448	BOLT - 1/2" - 13 x 7	2
19	C37869	WHEEL ASSEMBLY	2
	C44499	BEARING - wheel.....	2
	C45636	TIRE - 13 x 5.00 - 6.....	1
	C45634	RIM	1
20	C45711	BUSHING - tail wheel hub.....	2
21	113-646	BOLT - 5/8" - 11 x 7-1/2"	UAR
21	113-2606	BOLT - 5/8" - 11 x 11"	UAR
22	131 -356	NUT - 5/8" - 11	1
23	C45746	PLATE - stiffener	2
24	113-208	BOLT - 3/8" - 16 x 1-1/4	2
25	131-1352	NUT - 3/8" - 16 flange lock.....	2
26	195-541	WASHER - 5/8" x 1-1/2"	1

INDEX



INDEX



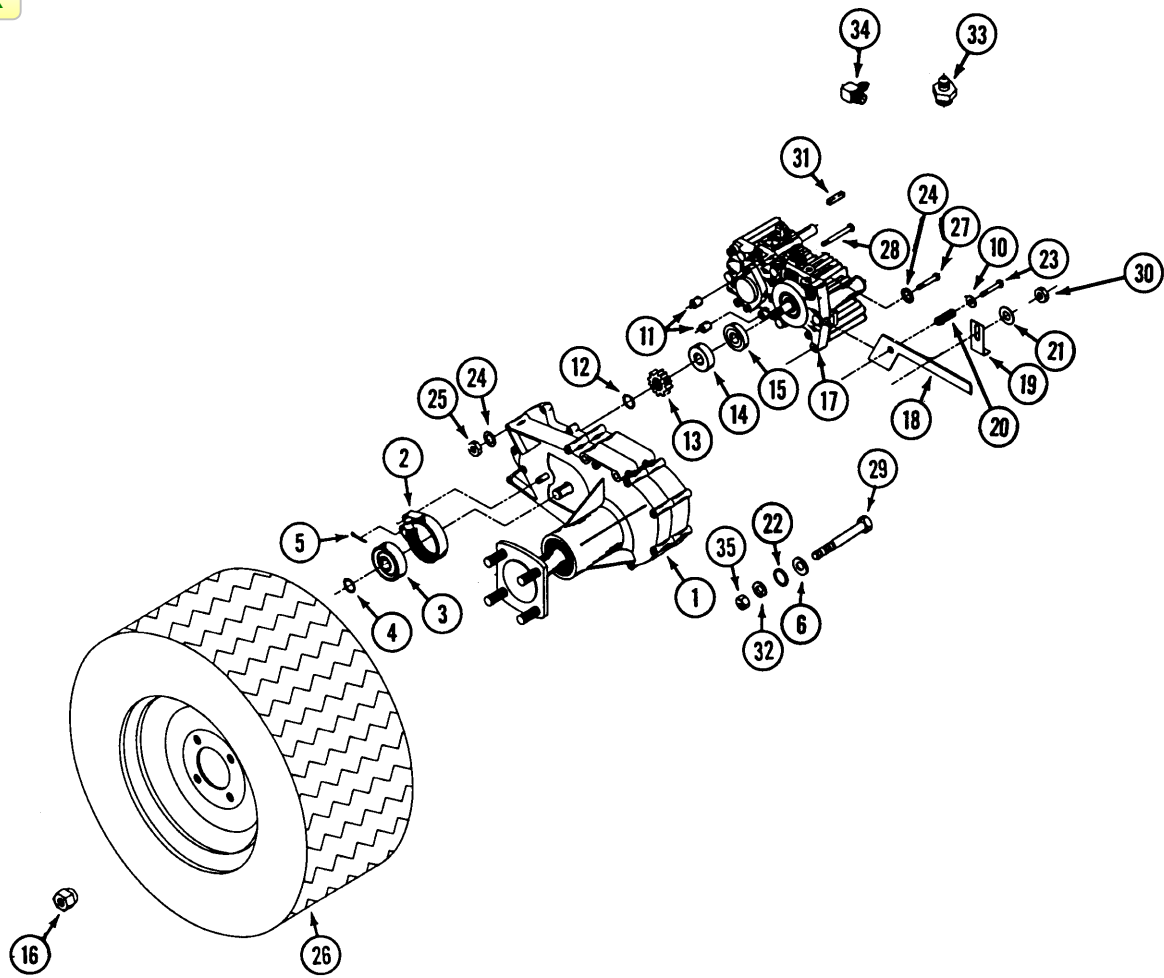
INDEX**SINGLE TAIL WHEEL**

REF.	PART NO.	DESCRIPTION	REQ'D
1	C37854	AXLE - wheel	1
2	C37855	WHEEL ASSEMBLY - tail	1
	C44499	BEARING - wheel.....	2
	C37857	TIRE - 16 x 6.50 - 8	8
	C37858	RIM - 8" w/bearing.....	1
3	C37859	FORK - tail wheel	1
4	C37860	COLLAR - set 1"	1
6	113-452	BOLT - 1/2" - 13 x 9-1/2"	1
7	85-58	SCREW - set 5/16" - 18 x 1/2" square head	1
8	192-23	LOCKWASHER - 1/2"	1
9	129-105	NUT - 1/2" - 13	1
10	C37824	BEARING - ball 1"	2
	219-20	FITTING - grease, 90° 1/4" - 28 self tap (caster pivot).....	1

DRIVE PULLEY AND CROSS SHAFT (TRANSMISSION)

REF.	PART NO.	DESCRIPTION	REQ'D
1	C46612	BELT - transmission drive	1
2	C37725	KEY - 5 x 5 x 25 mm	2
3	C46092	HUB - drive plate	1
4	C46100	MOUNT - idler	1
5	C16714	BUSHING	1
6	C37700	PLATE - drive	2
7	C37704	WASHER - 5/16" 10 gage	4
8	C46097	SHAFT - cross.....	1
9	C37703	SPACER - 1"	UAR
10	113-207	BOLT - 3/8" - 16 x 1"	2
11	C46088	PULLEY - drive (includes drive plate)	1
12	113-103	BOLT - 5/16" - 18 x 1"	UAR
12	113-104	BOLT - 5/16" - 18 x 1 -1/4"	UAR
12	113-110	BOLT - 5/16" - 18 x 2 -1/4"	UAR
13	192-20	LOCKWASHER - 5/16"	8
14	129-102	NUT - 5/16" - 18	8
15	131-938	NUT - 3/8" - 16 flange lock.....	2
16	C46609	ARM - idler (5720V, 5818V, 5820V)	1
16	C46611	ARM - idler (5822K)	1
17	195-2067	WASHER - 1/2" x 7/8"	1
18	132-310	PIN - cotter - 1/8" x 1".....	1
19	C15672	PULLEY - idler	1
20	113-209	BOLT - 3/8" - 16 x 1-1/2"	1
21	131-1352	NUT - 3/8" - 16 flange lock	1
22	C36998	SPRING - tension.....	1
23	111-342	BOLT - carriage 3/8" - 16 x 1"	1
24	C14768	SPACER - 3/8 x 1/2"	1
25	195-103	WASHER - 3/8	1
26	131-1181	NUT - 3/8" - 16 lock.....	1
27	83-55	SETSCREW - 5/16" - 18 x 5/16"	2
28	C46792	FAN - CCW, R.H	2
28	C46608	FAN - CCW, L.H.....	1
29	C46658	LINK - idler spring	1
30	C37702	SPACER - 1/4"	UAR
31	195-102	WASHER - 5/16"	8

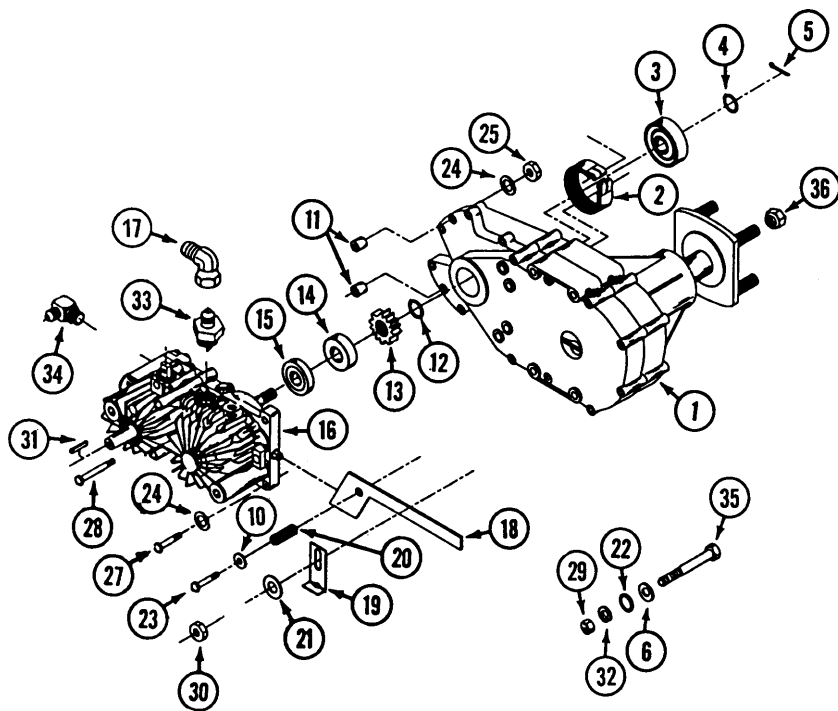
INDEX



DRIVE ASSEMBLY R.H.

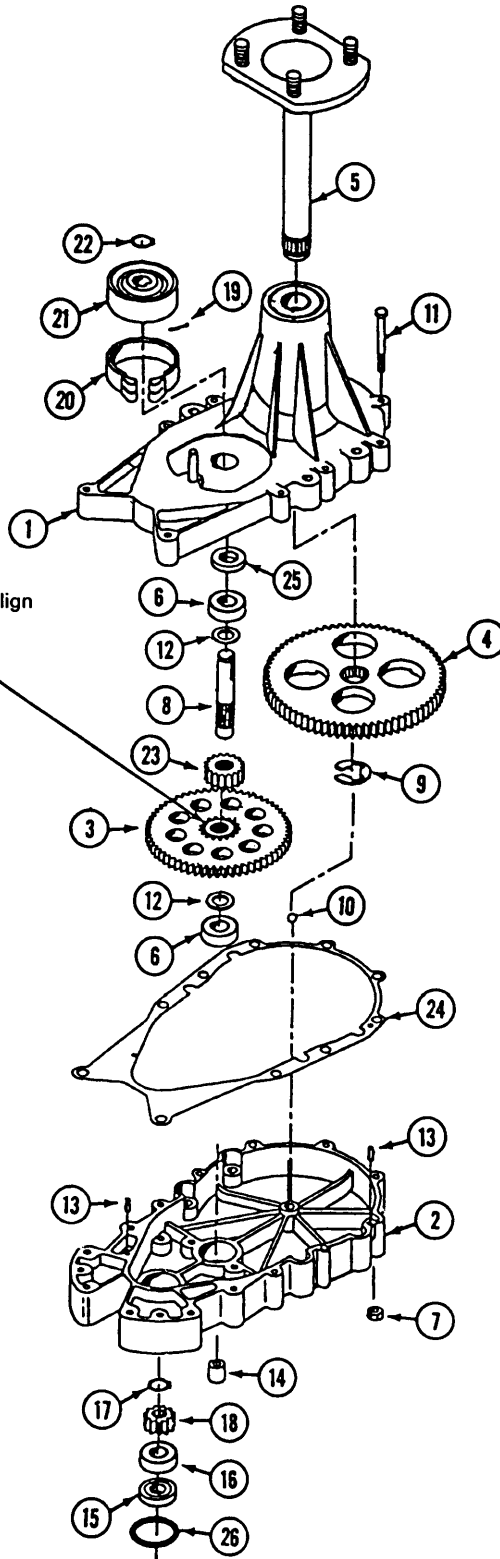
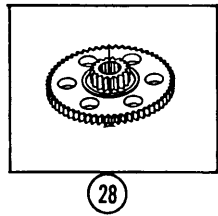
REF.	PART NO.	DESCRIPTION	REQ'D
1	C46087	TRANSMISSION - ZT (see page 27 for repairs)	1
2	C37730	BAND - brake	1
3	C37731	DRUM - brake	1
4	C37732	RING - snap	1
5	132-320	PIN - cotter 3/32" x 3/4"	1
6	195-525	WASHER .40" x .81"	6
10	195-102	WASHER - 1/4	1
11	C37736	SPACER	2
12	C37737	RING - snap	1
13	C37738	GEAR	1
14	C37739	BEARING	1
15	C37740	SPACER	1
16	C37657	NUT - lug 1/2"-20	4
17	C45399	PUMP - hydro R.H. (see page 29 for repairs)	1
18	C45166	LEVER - transmission dump R.H.	1
19	C37743	BRACKET - dump lever stop	1
20	C37744	SPRING - compression	1
21	195-104	WASHER - 3/8	1
22	C45900	O RING - mounting	8
23	C37747	BOLT - dump lever	1
24	192-20	LOCKWASHER - 5/16	4
25	129-102	NUT - 5/16 - 18	2
26	C37763	WHEEL ASSEMBLY	1
	C37652	TIRE - 18 X 9.50 - 8	1
	C37656	RIM - wheel 8 x 6	1
27	113-120	BOLT - 5/16 - 18 x 1-3/4	2
28	113-134	BOLT - 5/16 - 18 x 7-1/2	2
29	113-203	BOLT - 3/8 - 16 x 3-1/2	8
29	113-267	BOLT - 3/8" - 16 x 4" mounting	2
30	131-1181	NUT - 3/8" - 16 lock	1
31	C37752	KEY - 5 x 5 x 25mm	1
32	192-21	LOCKWASHER - 3/8"	8
33	218-5354	ADAPTER - pump outlet	1
34	218-5278	ADAPTER - 90° pump inlet	1
35	129-103	NUT - 3/8" - 16	8

INDEX



REF.	PART NO.	DESCRIPTION	REQ'D
1	C46087	TRANSMISSION - ZT (see page 27 for repairs)	1
2	C37730	BAND - brake	1
3	C37731	DRUM - brake	1
4	C37732	RING - snap	1
5	132-320	PIN - cotter 3/32" x 3/4"	1
6	195-525	WASHER - .40" x .81"	6
10	195-102	WASHER - 1/4	1
11	C37736	SPACER	2
12	C37737	RING - snap	1
13	C37738	GEAR	1
14	C37739	BEARING	1
15	C37740	SPACER	1
16	C45398	PUMP - hydro LH. (see page 29 for repairs)	1
17	218-980	FITTING - 90° male to female	1
18	C45165	LEVER - transmission dump L.H	1
19	C37743	BRACKET - dump lever stop	1
20	C37744	SPRING - compression	1
21	195-104	WASHER - 3/8	1
22	C45900	O RING - mounting	8
23	C37747	BOLT - dump lever	1
24	192-20	LOCKWASHER - 5/16"	4
25	129-102	NUT - 5/16 - 18	2
27	113-120	BOLT - 5/16 - 18 x 1-3/4	2
28	113-134	BOLT - 5/16 - 18 x 7-1/2	2
29	129-103	NUT - 3/8" - 16	8
30	131-1181	NUT - 3/8 - 16 lock	1
31	C37752	KEY - 5 x 5 x 25mm	1
32	192-21	LOCKWASHER - 3/8"	8
33	218-5354	FITTING - male adaptor pump outlet	1
34	218-5278	FITTING - male adaptor 90° pump inlet	1
35	113-203	BOLT - 3/8 - 16 x 3 -1/2 mounting	2
35	113-267	BOLT - 3/8 - 16 x 4 mounting	6
	C37763	WHEEL ASSEMBLY - not shown	1
	C37652	TIRE - 18 x 9.50 - 8	1
	C37656	RIM - wheel	1
	C37657	NUT - lug 1/2 - 20	4

Phantom gear teeth on Ref. 3 must align with gear Ref. 23

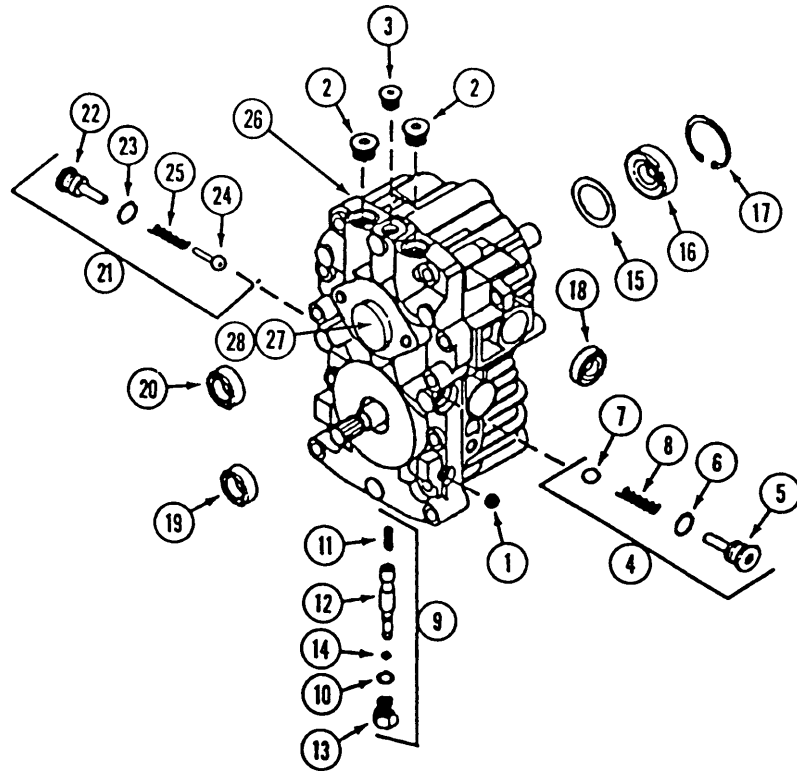


INDEX

TRANSMISSION - ZT DRIVE

REF.	PART NO.	DESCRIPTION	REQ'D
1	C40898	HOUSING - axle.....	1
	NSS	BEARING - ball	1
	NSS	BEARING - flanged	1
	NSS	PIN - clevis	1
2	C40902	HOUSING - hydro mount	1
3	C43685	GEAR - 60 T.....	1
4	C40904	GEAR - drive	1
5	C40905	SHAFT - axle.....	1
6	C34464	BEARING	2
7	129-102	NUT - 5/16"-18	2
8	C40908	SHAFT - brake	1
9	C40909	RING - retaining	1
10	C40910	BALL - 3/8"	1
11	113-12	BOLT - 1/4" - 20 x 2-1/2"	UAR
11	113-119	BOLT - 5/16" - 18 x 2-3/4"	UAR
12	C34447	WASHER.....	2
13	C34446	PIN - spirol.....	2
14	C37736	SPACER - mounting	2
15	C37740	SPACER - bearing	1
16	C37739	BEARING - ball	1
17	C37737	RING - retaining	1
18	C37738	GEAR - input	1
19	132-320	PIN - cotter	1
20	C37730	BAND - brake	1
21	C37731	DRUM - brake	1
22	C37732	RING - retaining	1
23	C43686	GEAR - 17T.....	1
24	C43687	GASKET - housing.....	1
25	C43688	SEAL - oil	1
26	C43689	"O" RING	1
27	C43752	GREASE - 10 oz. tube (2 required)	2
28	NSS	GEAR - (use C43685, C43686)	1

INDEX

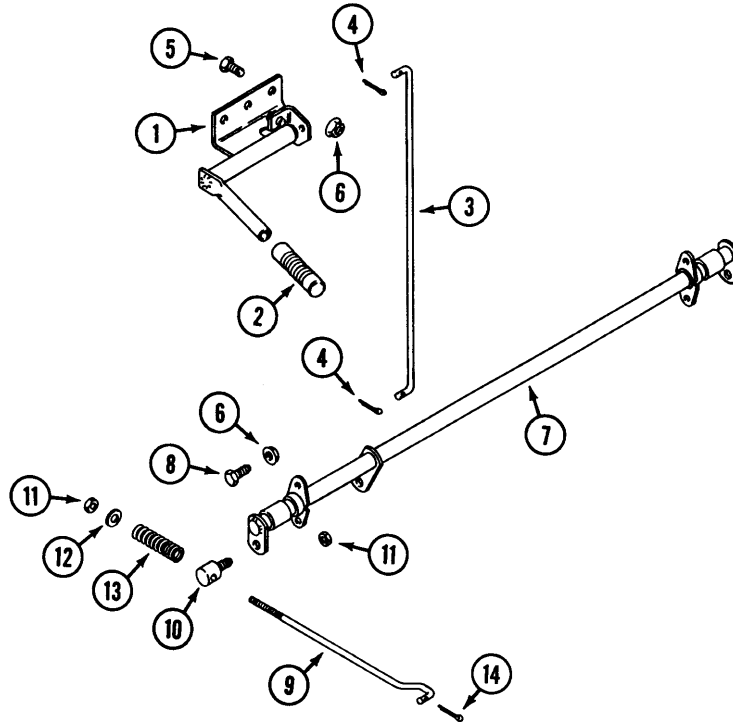


INDEX

HYDROSTATIC PUMP-ZT DRIVE

REF.	PART NO.	DESCRIPTION	REQ'D
	C45398	PUMP - hydrostatic L.H. (CW)	1
	C45399	PUMP - hydrostatic R.H. (CCW)	1
1	C34124	PLUG - pipe	1
2	C34125	PLUG - 9/16"-18	2
3	C34126	PLUG - 7/16"-20	1
4	C43690	KIT - check valve (with check ball) top	2
5	NSS	PLUG - check valve	1
6	NSS	"O" RING - .078" x .468"	1
7	NSS	BALL - check	1
8	NSS	SPRING	1
9	C34128	KIT - by pass	1
10	NSS	"O" RING - .072 x .351	1
11	NSS	SPRING	1
12	NSS	SPOOL - by pass	1
13	NSS	PLUG - by pass	1
14	NSS	"O" RING	1
15	NSS	SPACER	1
16	NSS	SEAL - lip	1
17	NSS	RING - retaining	1
18	NSS	SEAL - lip	1
19	NSS	SEAL - lip	1
20	NSS	SEAL - lip	1
21	C45408	KIT - check valve (with poppet) bottom	1
22	NSS	PLUG - check valve	1
23	NSS	"O" RING - .078" x .468"	1
24	NSS	POPPET - check	1
25	NSS	SPRING	1
26	C43751	GASKET - body	1
27	C43750	KIT - charge pump	1
28	C43749	"O" - RING - charge pump cover	1
	C34129	KIT - seal (includes ref. 6, 10, 14, 15, 16, 17, 18, 19 and 20)	1

INDEX

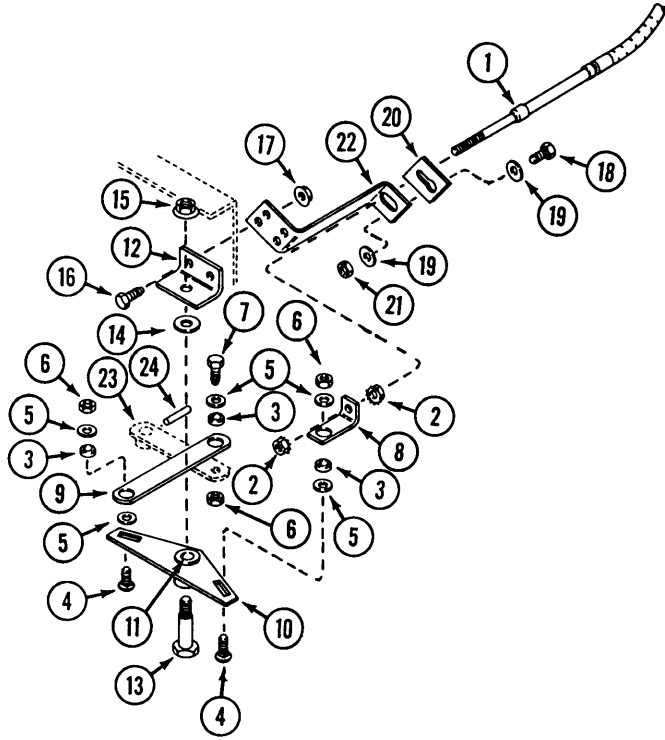


INDEX

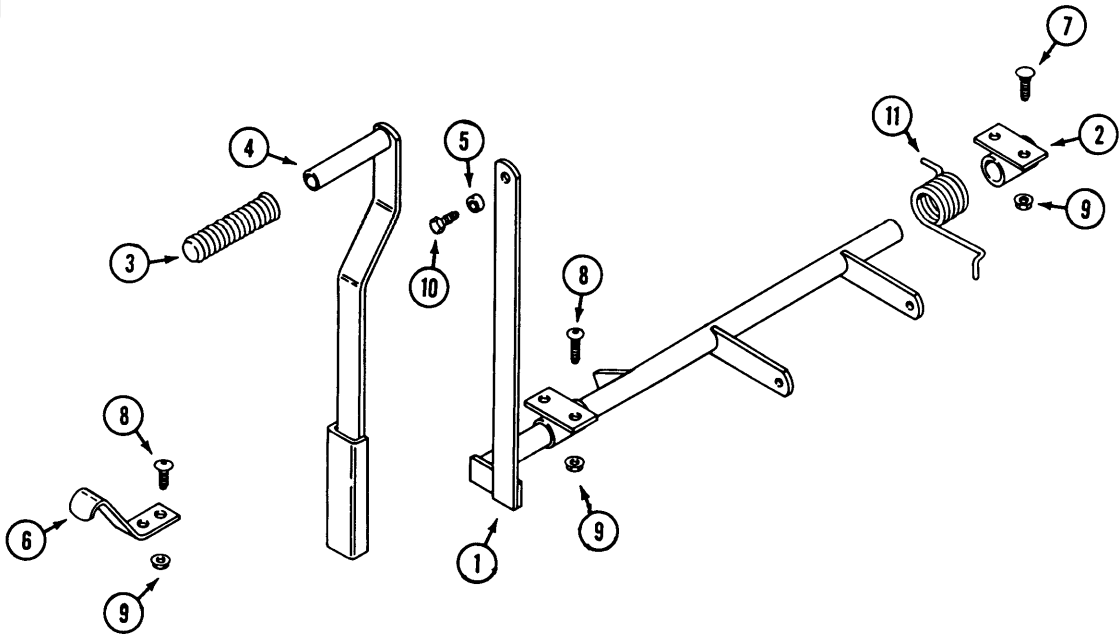
PARKING BRAKE

REF.	PART NO.	DESCRIPTION	REQ'D
1	C46596	LEVER - brake	1
2	C37631	GRIP - handle	1
3	C46601	ROD - brake lever	1
4	132-332	PIN - cotter 3/32" x 1"	4
5	113-3	BOLT - 1/4" - 20 x 3/4"	2
6	131-934	NUT - 1/4" - 20 flange lock	6
7	C46602	SHAFT - brake	1
8	113-2	BOLT - 1/4" - 20 x 5/8"	4
9	C37733	ROD - brake caliper	2
10	C37724	COLLAR - caliper rod	2
11	131-71	NUT - 1/4" - 20 lock	4
12	195-102	WASHER - 5/16" x 3/4"	2
13	C37725	SPRING - compression	2
14	132-320	PIN - cotter 3/32" x 3/4"	2

INDEX



INDEX



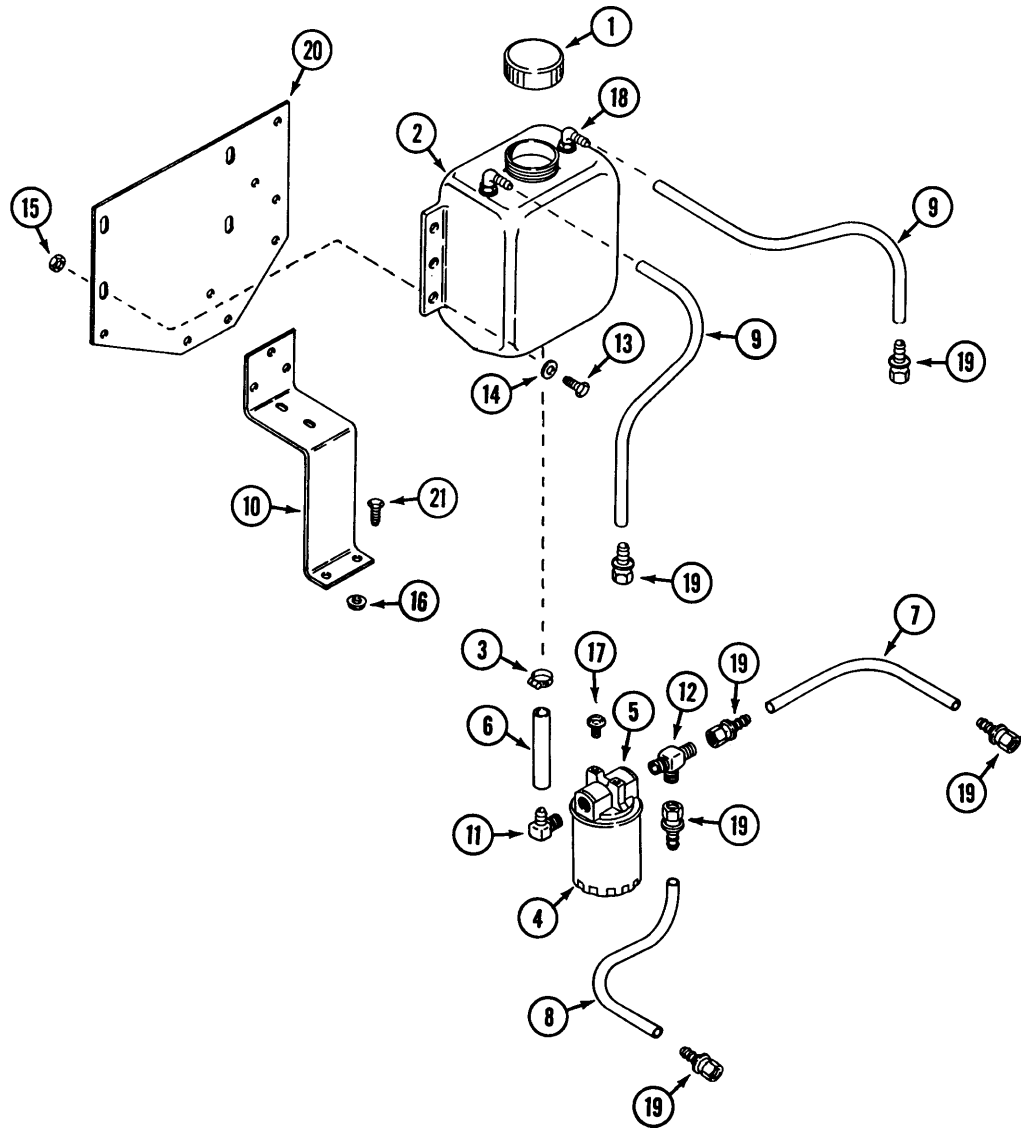
INDEX**C43293 STEERING CABLE KIT**

REF.	PART NO.	DESCRIPTION	REQ'D
1	C42894	CABLE - steering 46	2
2	193-1000	NUT - #10-32	8
3	C42895	BUSHING - steering cable	8
4	111-111	BOLT - 1/4" - 20 x 1 carriage	4
5	195-102	WASHER - 1/4"	10
6	131-71	NUT - 1/4"-10	6
7	113-4	BOLT - 1/4" - 20 x 1"	2
8	C42896	BRACKET - steering cable end	4
9	C42897	LINK - control cable.....	2
10	C42898	BELLCRANK.....	2
11	C16714	BUSHING.....	1
12	C42901	BRACKET - bell crank mounting.....	2
13	C16745	BOLT - shoulder	2
14	195-533	WASHER - 1/2"	2
15	131-1352	NUT - 3/8" - 16 flange lock	2
16	113-103	BOLT - 5/16 - 18 x 1".....	4
17	131-911	NUT - 5/16 - 18	4
18	113-4	BOLT - 1/4 - 20 x 1	2
19	195-102	WASHER - 1/4"	4
20	C42903	PLATE - cable mounting	2
21	131-71	NUT - 1/4" - 20 lock.....	2
22	C42902	BRACKET - cable mounting.....	2
23	C46593	ARM - transmission.....	2
24	C34173	PIN - spring	2

INDEX**LIFT LEVER**

1	C44942	LEVER - lift.....	1
2	C44948	PIVOT - lift.....	1
3	C37631	GRIP - handle	1
4	C44949	EXTENSION - lift lever, upper.....	1
5	C42895	BUSHING	1
6	C44952	BRACKET - lever lock down	1
7	111-132	BOLT - carriage 5/16" - 18 x 3/4"	2
8	C44959	BOLT - 5/16"- 18 x 1"	4
9	131-911	NUT - 5/16" - 18 flange lock	6
10	113-1	BOLT - 1/4 - 20 x 1/2".....	1
11	C45120	SPRING - torsion	1

INDEX

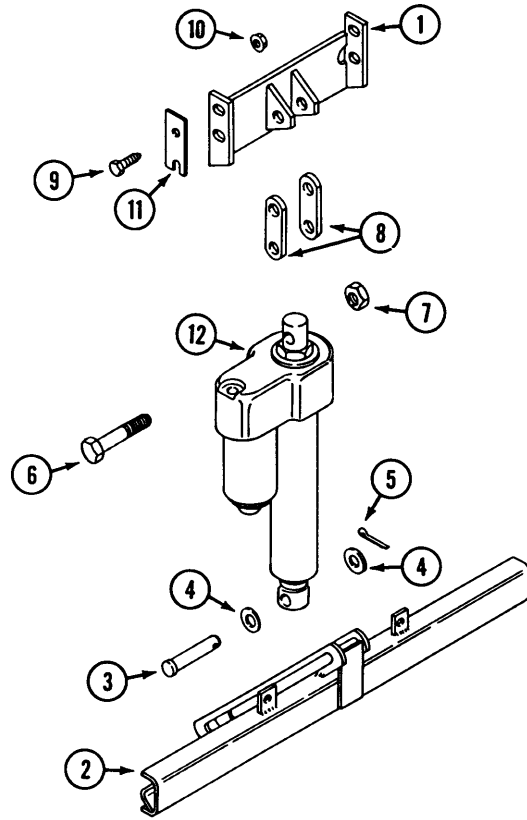


INDEX

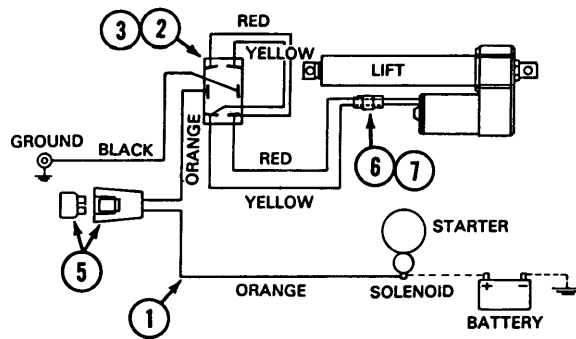
HYDRAULIC SYSTEM

REF.	PART NO.	DESCRIPTION	REQ'D
1	C37639	CAP - oil tank	1
2	C37778	TANK - oil (includes cap and fittings).....	1
3	214-254	CLAMP - hose 5/8".....	2
4	C37637	FILTER - oil	1
5	C33446	HEAD - oil filter.....	1
6	C42785	HOSE - 5/8" x 4" (12 cut to length)	1
7	C42784	HOSE - hydraulic 3/8 x 13.5" (48 cut to length)	1
8	C42784	HOSE - hydraulic 3/8 x 17.75 (48 cut to length)	1
9	C42784	HOSE - hydraulic 3/8" x 20.5 (48 cut to length)	1
10	C46577	BRACKET - filter mounting	1
11	217-332	FITTING - male 900 adapter	1
12	218-626	FITTING - male tee adapter	1
13	113-3	BOLT - 1/4" - 20 x 3/4"	4
14	195-102	WASHER - 1/4"	8
15	131-71	NUT - 1/4" - 20 lock	4
16	131-934	NUT - 1/4 - 20 flange lock	7
17	121-21	BOLT - 1/4" - 20 x 3/4" self-tap	2
18	C42590	FITTING - 90°.....	2
19	C41986	FITTING - 3/8" hose barb x 3/8" FM JIC	6
20	C46575	MOUNT - oil tank	1
21	113-2	BOLT - 1/4" - 20 x 5/8"	7

INDEX



INDEX



INDEX**ELECTRIC DECK LIFT
CYUNDER STYLE**

REF.	PART NO.	DESCRIPTION	REQ'D
1	C45697	MOUNT - cylinder	1
2	C45700	BAR - cross	1
3	C29804	PIN - clevis 1/2" x 2-1/2"	1
4	195-2067	WASHER - 1/2"	2
5	132-320	PIN - cotter 3/32" x 3/4	1
6	113-426	BOLT - 1/2" - 13 x 2-3/4"	2
7	131-1182	NUT - 1/2" - 13 lock	2
8	C45768	LINK - spacer	UAR
9	113-103	BOLT - 5/16-18 x 1	4
10	131-911	NUT - 5/16" - 18 flange lock	4
11	C45766	SHIM - cylinder mount	UAR
12	C45706	CYLINDER - lift	1

INDEX**ELECTRICAL SYSTEM (DECK LIFT)
CYLINDER STYLE**

REF.	PART NO.	DESCRIPTION	REQ'D
1	C45705	HARNESS - wire	1
2	C45775	SWITCH	1
3	C45780	NUT - 15/32" - 32 with boot (switch mounting)	1
4	C44495	DECAL - lift switch	1
5	C31947	KIT - fuse holder	1
5	C30260	FUSE - 30 amp	1
6	C24813	CONNECTOR - wire harness	1
7	C31948	CONNECTOR - lift actuator	1

ELECTRICAL SYSTEM (5720V, 5818V, 5820V)

REF.	PART NO.	DESCRIPTION	REQ'D
	C45535	HARNESS - wire, main	1
1	C45539	HARNESS - wire, alternator and magneto.....	1
2	C37505	BREAKER - circuit, 10 amp	1
3	C32178	HEADLIGHT.....	2
	C22573	LENS - headlight.....	1
	C37508	BULB - headlight.....	1
	C37509	RECEPTICAL.....	1
	C14304	GASKET - headlight.....	1
4	C31937	SWITCH - PTO (also use C31619 Cap)	1
	C44469	NUT - 1/2 - 27 (Black) PTO switch retaining.....	1
	C31620	NUT - 1/2" - 27 (Black) PTO switch retaining (knurled)	1
5	C43044	SWITCH - headlight	1
6	C30267	SWITCH - ignition	1
	C32407	KEY - ignition	1
	C32397	CAP - nut, ignition switch	1
	193-63	LOCKWASHER - 5/8	1
	C32396	NUT - 5/8 - 32 ignition switch.....	1
7	C29413	AMMETER	1
8	C45917	METER - hour	1
9	C45536	LIGHT - oil.....	1
10	C45537	SWITCH - seat	1
11	C37521	SWITCH - safety	2
	182-525	SCREW - #10 - 32 x 3/8 (safety switch mount)	1
	192-18	LOCKWASHER - 3/16" (safety switch mount).....	1
	193-1000	NUT - #10-32 Lock (safety switch mount).....	2
	182-528	SCREW - #10 - 32 x 1/2 (safety switch mount)	2
12	C41010	BATTERY - 12 volt.....	1
13	C44261	WIRE - starter	1
14	C37511	CLUTCH - PTO	1
15	C37528	CABLE - ground	1
16	C44075	WIRE - headlight.....	1
17	C33024	SOLENOID - start	1
	113-1	BOLT - 1/4 -20 x 1/2" (solenoid mounting).....	2
	195-518	WASHER - 1/4"	2
	192-19	LOCKWASHER - 1/4 (solenoid studs).....	2
	129-101	NUT - 1/4 -20 (solenoid studs).....	2
18	C37523	CABLE - battery positive to solenoid	1
20	C41643	WIRE - ground	1
21	C46218	HARNESS - oil pressure switch	1
22	C31 947	KIT - fuse holder.....	1
23	C30260	FUSE - 30 amp	1
24	113-3	BOLT - 1/4" - 20 x 3/4"	2
25	195-102	WASHER - 1/4"	2
26	129-101	NUT - 1/4" - 20	2
27	C37983	BRACKET - hold down.....	1
28	C38677	BOLT - 1/4" - 20 x 7"	2
29	131-71	NUT - 1/4" - 20 lock.....	2
30	C24069	COVER - terminal, battery	1
30	C44079	COVER - terminal, starter	1

ELECTRICAL SYSTEM (5822K)

REF.	PART NO.	DESCRIPTION	REQ'D
	C46636	HARNESS - wire, main	1
1	C46528	CONNECTOR - engine	1
2	C37505	BREAKER - circuit, 10 amp	1
3	C32178	HEADLIGHT	2
	C22573	LENS - headlight	1
	C37508	BULB - headlight	1
	C37509	RECEPTICAL	1
	C 14304	GASKET - headlight	1
4	C31937	SWITCH - PTO (also use C31619 Cap)	1
	C44469	NUT- 1/2" - 27 (Black) PTO switch retaining	2
5	C43044	SWITCH - headlight	1
6	C30267	SWITCH - ignition	1
	C32407	KEY - ignition	1
	C32397	CAP - nut, ignition switch	1
	193-63	LOCKWASHER - 5/8"	1
	C32396	NUT - 5/8" - 32 ignition switch	1
7	C29413	AMMETER	1
8	C45917	METER - hour	1
9	C45536	LIGHT - oil	1
10	C45537	SWITCH - seat	1
11	C37521	SWITCH - safety	2
	182-525	SCREW - #10 - 32 x 3/8" (safety switch mount)	1
	192-18	LOCKWASHER - 3/16 (safety switch mount)	1
	193-1000	NUT - #10 - 32 Lock (safety switch mount)	2
	182-528	SCREW - #10 - 32 x 1/2" (safety switch mount)	2
12	C41010	BATTERY - 12 volt	1
13	131-71	NUT - 1/4" - 20 lock	2
14	C46504	CLUTCH - PTO	1
15	C37528	CABLE - ground	1
16	C44075	WIRE - headlight	1
17	C33024	SOLENOID - start	1
	113-1	BOLT - 1/4" - 20 x 1/2" (solenoid mounting)	2
	195-518	WASHER - 1/4"	2
	192-19	LOCKWASHER - 1/4" (solenoid studs)	2
	129-101	NUT - 1/4" - 20 (solenoid studs)	2
18	C46635	CABLE - battery positive to starter	1
19	C24069	COVER - terminal, battery	1
19	C44079	COVER - terminal, starter	1
20	C41643	WIRE - ground	1
21	C46529	WIRE - solenoid jumper	1
22	C31947	KIT - fuse holder	1
23	C30260	FUSE - 30 amp	1
24	113-3	BOLT - 1/4 - 20 x 3/4	2
25	195-102	WASHER - 1/4	2
26	129-101	NUT - 1/4" - 20	2
27	C37983	BRACKET - hold down	1
28	C38677	BOLT - 1/4" - 20 x 7	2

INGERSOLL

1 INGERSOLL

11

5720V

6

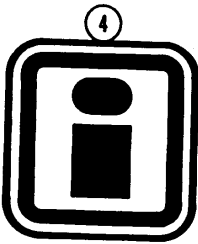
ATTENTION
 BEFORE STARTING ENGINE
 -STEERING LEVERS-LOCK
 IN NEUTRAL
 -PTO-DISENGAGE
 -PARKING BRAKE-ON
 READ OPERATOR'S MANUAL

12

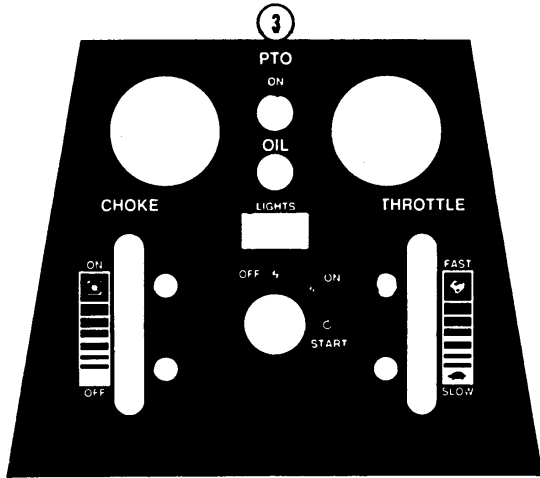
CAUTION ALL COOLING FINS AND ENGINE COMPARTMENT MUST BE KEPT CLEAN
CRITICAL
 READ OPERATOR'S MANUAL

5

WARNING
 MACHINE UNSTABLE WITH MOWER DECK IN THE RAISED POSITION. IMPLEMENT LIFT CONTROL. KEEP IN THE FLOAT POSITION WHEN MOVING OR TRANSPORTING. FAILURE TO OBSERVE THIS WARNING COULD RESULT IN SERIOUS INJURY. READ OPERATOR'S MANUAL

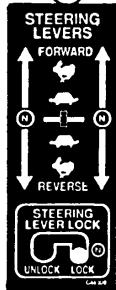


4



3

7



8



9

DANGER
 ENGINES PRODUCE CARBON MONOXIDE WHICH IS AN ODORLESS DEADLY POISON. DO NOT OPERATE IN AN ENCLOSED AREA

10

WARNING
 TO AVOID SERIOUS INJURY AND TO HELP AVOID SERIOUS EQUIPMENT FAILURE DO THE FOLLOWING MAINTENANCE DAILY AFTER STOPPING OR AS SPECIFIED BELOW.

- REMOVE IGNITION KEY
- CLEAN: - ENGINE
 - ENGINE COMPARTMENT
 - HYDRAULIC PUMP FINS AND COOLER IF EQUIPPED.
 - MOWER DECK UNDER SIDE
- FLUIDS: - ADD IF REQUIRED
 - ENGINE OIL - CHECK EVERY 4 HRS.
 - HYDRAULIC OIL
- LUBE: - READ "LUBRICATION SCHEDULE" SHOWN BELOW.

READ OPERATOR'S AND ENGINE MANUALS.

LUBRICATION SCHEDULE

ALL MACHINES	SERVICE HOURS
1 AXLE-GAUGE WHEEL	8
2 AXLE-TAIL WHEEL	8
3 FORK-GAUGE WHEEL	40
4 FORK-TAIL WHEEL	40
5 SPINDLE-MOWER DECK	40
6 GEAR BOX-MOWER DECK	100
CHAIN DRIVE (IF EQUIPPED)	
7A CHAIN	DAILY
7B JACK SHAFT-SPROCKETS	4
7C AXLE-DRIVE WHEELS	40
PULLEY JACK SHAFT (IF EQUIPPED)	
8A JACK SHAFT-PULLEY	40
DUAL TAIL WHEEL	
8A AXLE-TAIL WHEEL	8
8B FORK-TAIL WHEEL	40
9C AXLE-AXLE PIVOT	100
VAC BLOWER	
10 SPINDLE-BLOWER	40

2

WARNING
 READ OPERATOR'S MANUALS. KNOW LOCATION & FUNCTION OF ALL CONTROLS. KEEP ALL GUARDS, SHIELDS & SAFETY SWITCHES IN PLACE & WORKING. CLEAN WORK AREA OF THINGS THAT COULD BE THROWN BY THE BLADES. DO NOT MOW WHEN CHILDREN OR OTHERS ARE AROUND. NEVER CARRY CHILDREN. LOOK DOWN & BEHIND BEFORE AND WHILE BACKING. GO UP AND DOWN SLOPES, NOT ACROSS. IF MACHINE STOPS GOING UPHILL, STOP BLADES AND BACK DOWN SLOWLY. AVOID SUDDEN TURNS. FAILURE TO OBSERVE THESE PRECAUTIONS COULD RESULT IN SERIOUS INJURY OR DEATH.

13

5820V

14

5822K

15

5818V

REF.	PART NO.	DESCRIPTION	REQ'D
1	C39528	DECAL - front body side L.H. (5720V).....	1
1	C39527	DECAL - front body side R.H.(5720V) shown.....	1
1	C46898	DECAL - rear body side (5818V, 5820V, 5822 K)	2
2	C46321	DECAL - "WARNING" operation	1
3	C40954	DECAL - instrument panel (5720V)	1
3	C37501	DECAL - instrument panel (5818V, 5820V, 5822K)	1
4	C37464	MEDALLION - Ingersoll.....	1
5	C46315	DECAL - "WARNING" operation	1
6	C46310	DECAL - "ATTENTION"	1
7	C46309	DECAL - steering levers.....	1
8	C46312	DECAL - parking brake	1
9	C37500	DECAL - "DANGER" carbon monoxide	1
10	C46318	DECAL - lubrication.....	1
11	C46643	DECAL - rear body side L.H. "5720V".....	1
11	C46644	DECAL - rear body side R.H. "5720V" (shown)	1
12	C46317	DECAL - clean fins.....	1
13	C46894	DECAL - body side L.H. "5820V"	1
13	C46895	DECAL - body side R.H. "5820V" (shown).....	1
14	C46896	DECAL - body side L.H. "5822K"	1
14	C46897	DECAL - body side R.H. "5822K" (shown).....	1
15	C46952	DECAL - body side L.H. "5818V"	1
15	C46953	DECAL - body side R.H. "5818V" (shown).....	1
16	C46989	DECAL - "INGERSOLL" front (5818V,5820V,5822K).....	1